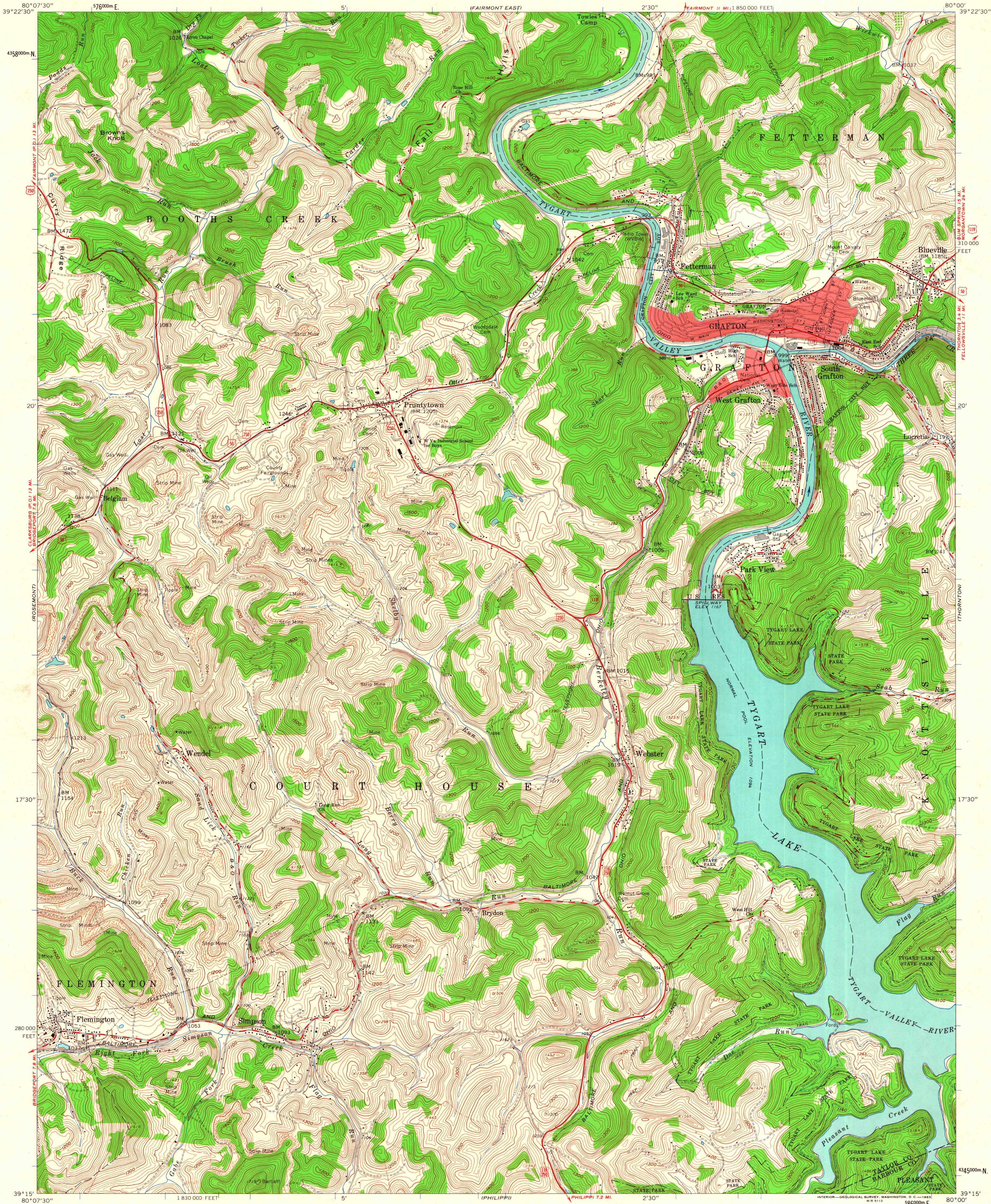


UNITED STATES
DEPARTMENT OF THE INTERIOR
GEOLOGICAL SURVEY

GRAFTON QUADRANGLE
WEST VIRGINIA
7.5 MINUTE SERIES (TOPOGRAPHIC)
SE 1/4 FAIRMONT 15' QUADRANGLE



Mapped, edited, and published by the Geological Survey

Control by USGS and USC&GS

Topography by photogrammetric methods from aerial photographs taken 1957. Field checked 1960

Polyconic projection. 1927 North American datum

10,000-foot grid based on West Virginia coordinate system, north zone

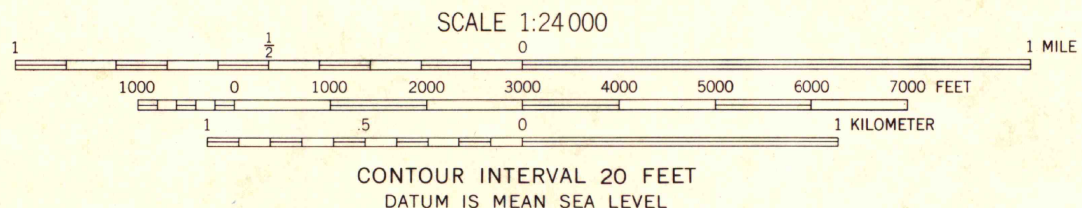
1000-meter Universal Transverse Mercator grid ticks, zone 17, shown in blue

Fine red dashed lines indicate selected fence and field lines where generally visible on aerial photographs. This information is unchecked

Red tint indicates areas in which only landmark buildings are shown

Area covered by dashed light-blue pattern is subject to controlled inundation to 1167 feet

TRUE NORTH
MAGNETIC NORTH
APPROXIMATE MEAN DECLINATION, 1960



CONTOUR INTERVAL 20 FEET

DATUM IS MEAN SEA LEVEL

THIS MAP COMPLIES WITH NATIONAL MAP ACCURACY STANDARDS
FOR SALE BY U.S. GEOLOGICAL SURVEY, WASHINGTON 25, D. C.
A FOLDER DESCRIBING TOPOGRAPHIC MAPS AND SYMBOLS IS AVAILABLE ON REQUEST

ROAD CLASSIFICATION
Heavy-duty ——— Light-duty ———
Medium-duty ——— Unimproved dirt ———
U.S. Route



GRAFTON, W. VA.
SE 1/4 FAIRMONT 15' QUADRANGLE
N3915—W8000/7.5

1960