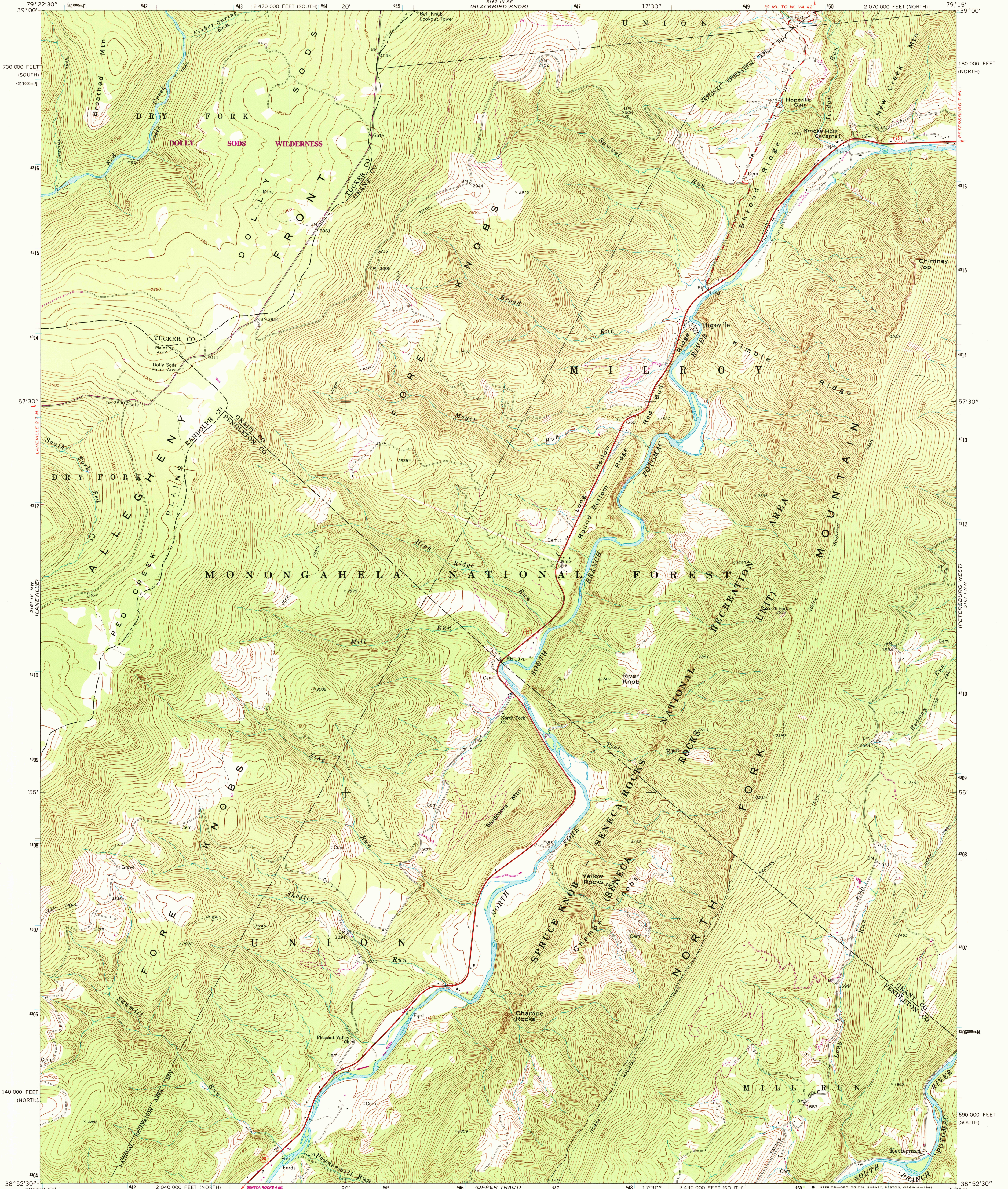


UNITED STATES
DEPARTMENT OF THE INTERIOR
GEOLOGICAL SURVEY

HOPEVILLE QUADRANGLE
WEST VIRGINIA
7.5 MINUTE SERIES (TOPOGRAPHIC)
NE/4 ONEGO 15' QUADRANGLE



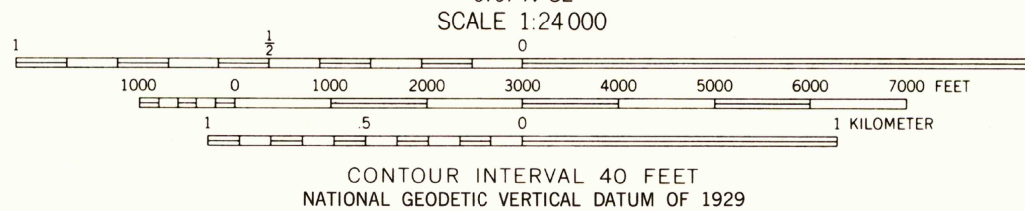
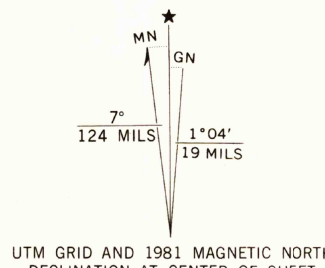
Mapped, edited, and published by the Geological Survey

Control by USGS and NOS/NOAA
Topography by photogrammetric methods from aerial photographs
taken 1966. Field checked 1969

Polyconic projection. 10,000-foot grid ticks based on West
Virginia coordinate system, north and south zones. 1000-meter
Universal Transverse Mercator grid ticks, zone 17, shown in blue
1927 North American Datum. To place on the predicted North
American Datum 1983 move the projection lines 7 meters south
and 21 meters west as shown by dashed corner ticks

Fine red dashed lines indicate selected fence and field lines where
generally visible on aerial photographs. This information is unchecked

There may be private inholdings within the boundaries
of the National or State reservations shown on this map



ROAD CLASSIFICATION	
Primary highway, hard surface	Light-duty road, hard or improved surface
Secondary highway, hard surface	Unimproved road
Interstate Route	U.S. Route
	State Route

HOPEVILLE, W. VA.
NE/4 ONEGO 15' QUADRANGLE
38079-H3-TF-024

Revisions shown in purple and woodland compiled in
cooperation with State of West Virginia agencies
from aerial photographs taken 1976 and other sources
This information not field checked. Map edited 1981

1969
PHOTOREVISED 1981
DMA 5161 IV NE-SERIES V854

