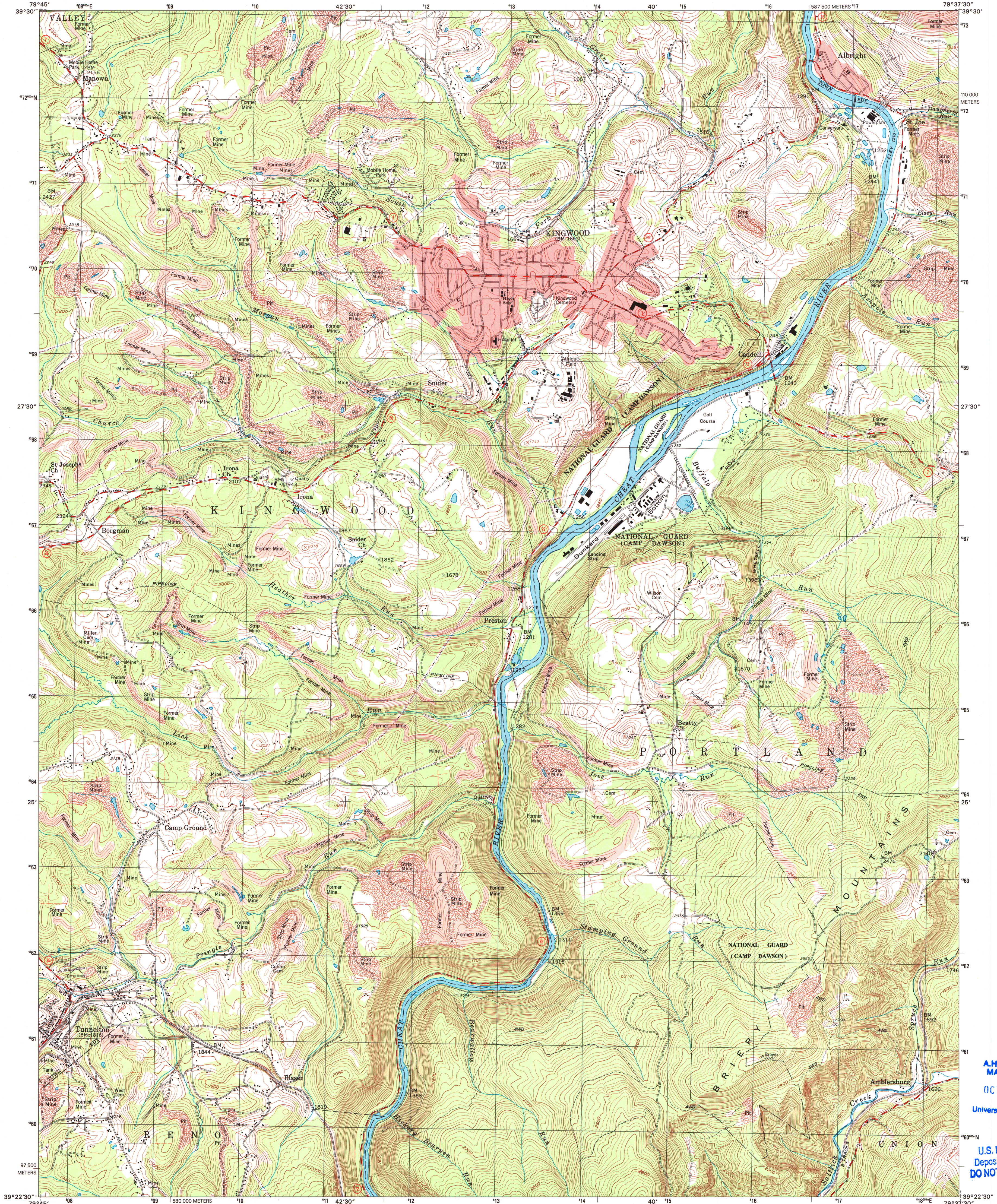


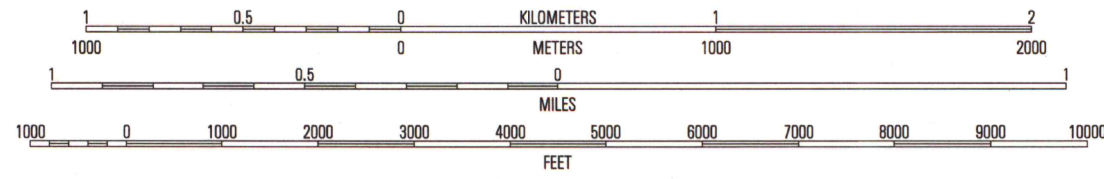
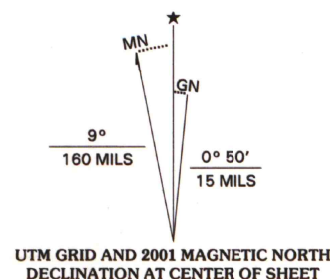


U.S. DEPARTMENT OF THE INTERIOR
U.S. GEOLOGICAL SURVEY

KINGWOOD QUADRANGLE
WEST VIRGINIA-PRESTON CO.
7.5-MINUTE SERIES (TOPOGRAPHIC)



Produced by the United States Geological Survey
Topography compiled 1957. Planimetry derived from imagery taken 1997 and other sources. Survey control current as of 1960
North American Datum of 1983 (NAD 83). Projection and 1 000-meter grid: Universal Transverse Mercator, zone 17
2 500-meter ticks: West Virginia Coordinate System of 1983 (north zone)
North American Datum of 1927 (NAD 27) is shown by dashed corner ticks. The values of the shift between NAD 83 and NAD 27 for 7.5-minute intersections are obtainable from National Geodetic Survey NADCON software
There may be private inholdings within the boundaries of the National or State reservations shown on this map
Landmark buildings verified 1960



CONTOUR INTERVAL 20 FEET
NATIONAL GEODETIC VERTICAL DATUM OF 1929
TO CONVERT FROM FEET TO METERS, MULTIPLY BY 0.3048



ROAD CLASSIFICATION
Primary highway
Secondary highway
Light-duty road, hard or improved surface
Unimproved road
Interstate Route
U.S. Route
State Route

1	2	3	1 Mascotown
4	5	4 Newburg	2 Valley Point
6	7	5 Terra Alta	3 Cuzart
	8	6 Follinsville	4 Newburg
		7 Rowlesburg	5 Terra Alta
		8 Aurora	6 Follinsville

KINGWOOD, WV
1997
NIMA 5062 1 NW-SERIES V854

A.H. ROBINSON
MAP LIBRARY
OCT 02 2002
University of Wisconsin
Madison
U.S. Regional
Depository Copy
DO NOT DISCARD

