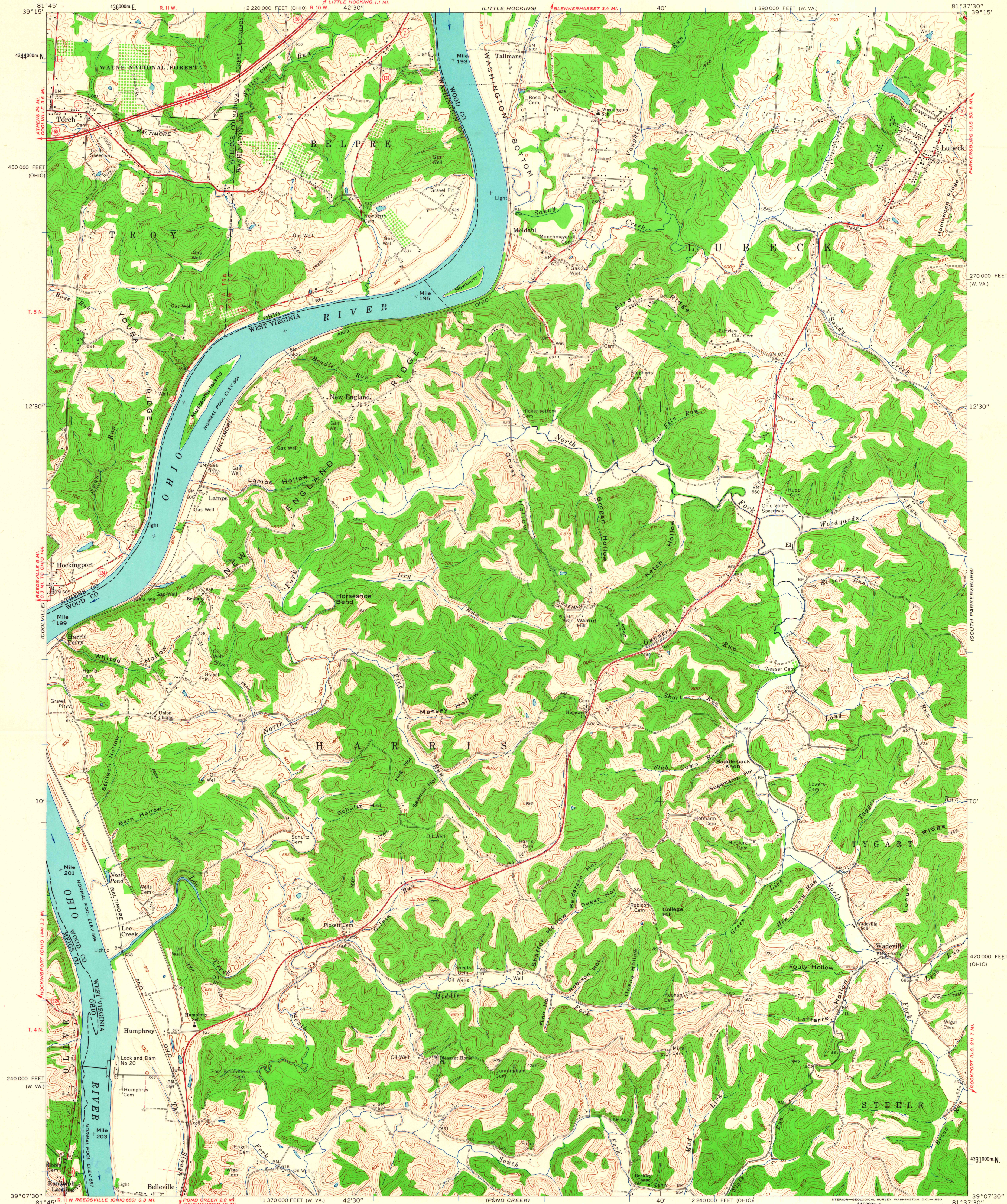


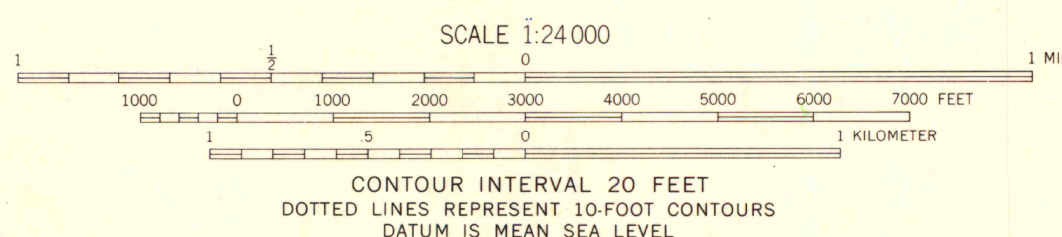
UNITED STATES
DEPARTMENT OF THE INTERIOR
GEOLOGICAL SURVEY

LUBECK QUADRANGLE
WEST VIRGINIA—OHIO
7.5 MINUTE SERIES (TOPOGRAPHIC)
NW/4 BELLEVILLE 15' QUADRANGLE



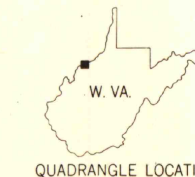
Maped, edited, and published by the Geological Survey
Control by USGS, USC&GS, and USCE
Topography by photogrammetric methods from aerial
photographs taken 1957. Field checked 1961
Polyconic projection. 1927 North American datum
10,000-foot grids based on West Virginia coordinate system,
north zone and Ohio coordinate system, south zone. 1000-meter
Universal Transverse Mercator grid ticks, zone 17, shown in blue
Fine red dashed lines indicate selected fence and field lines where
generally visible on aerial photographs. This information is unchecked
The state boundary as shown represents the approximate position of
the low water line as determined from U. S. Corps of Engineers
Ohio River Charts, surveyed 1913, and supplementary information
Land lines based on Ohio River Base. Dotted land lines established
by private subdivision of Ohio Company Purchase

APPROXIMATE MEAN
DECLINATION, 1961



THIS MAP COMPLIES WITH NATIONAL MAP ACCURACY STANDARDS
FOR SALE BY U. S. GEOLOGICAL SURVEY, WASHINGTON 25, D. C.
A FOLDER DESCRIBING TOPOGRAPHIC MAPS AND SYMBOLS IS AVAILABLE ON REQUEST

ROAD CLASSIFICATION
Heavy-duty ——— Light-duty ———
Medium-duty ——— Unimproved dirt ———
U. S. Route ——— State Route ———



LUBECK, W. VA.—OHIO
NW/4 BELLEVILLE 15' QUADRANGLE
N3907.5—W8137.5/7.5

1961

MAP AND AIR PHOTO LIBRARY
University of Wisconsin