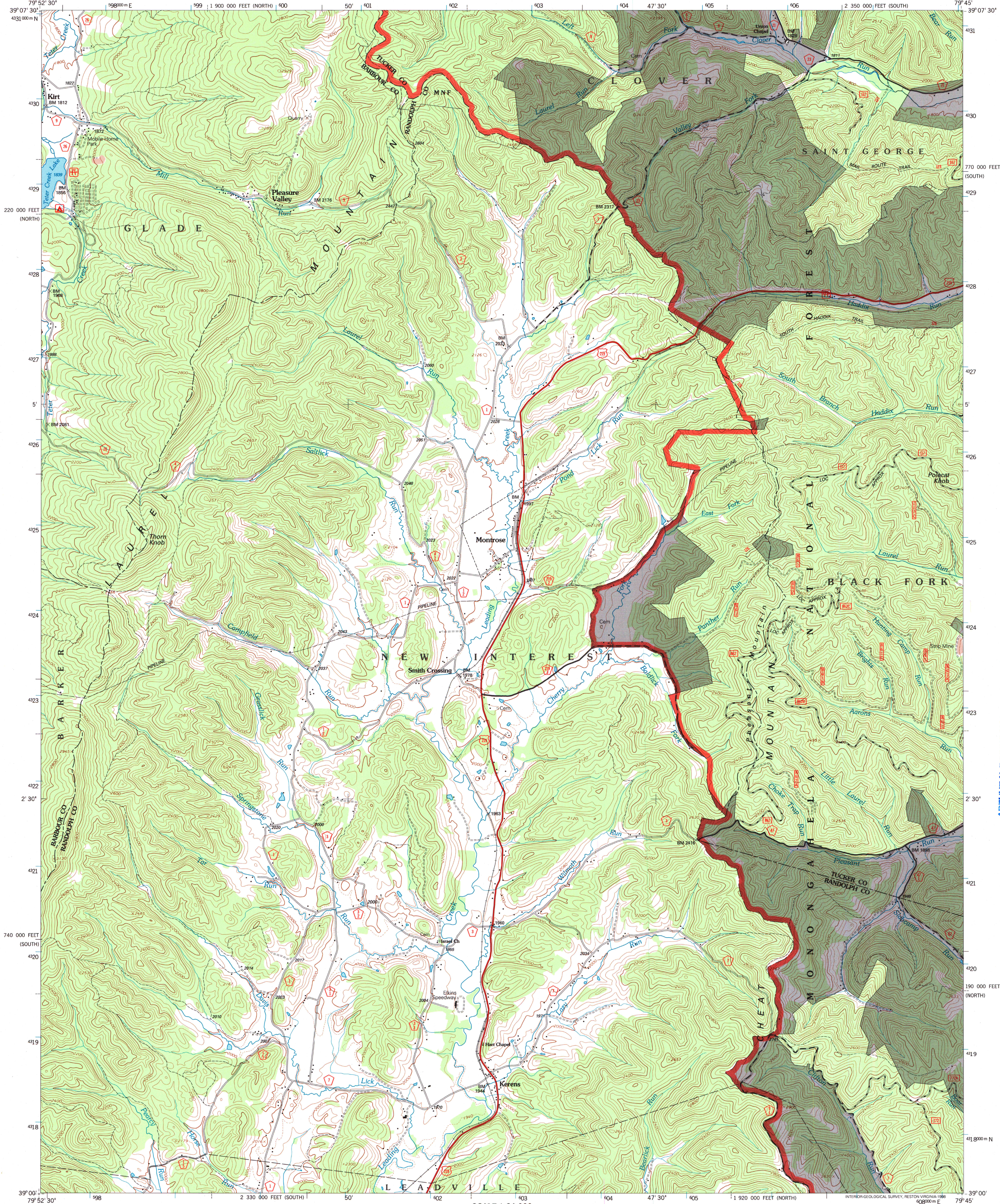


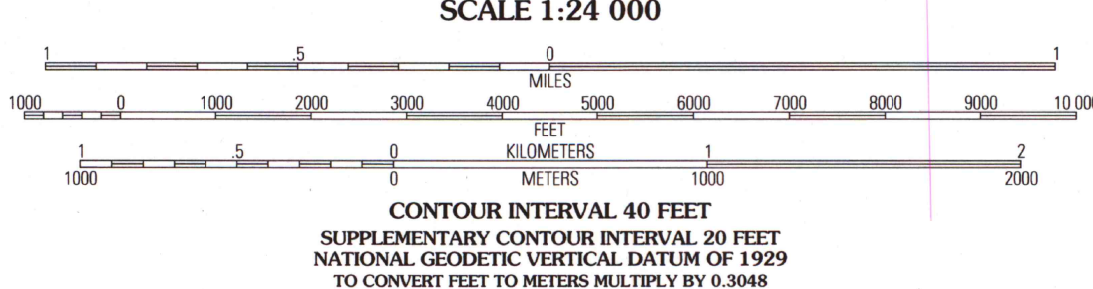
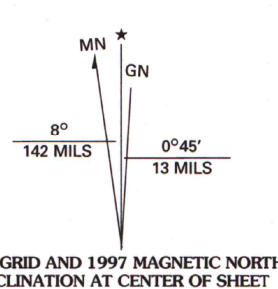
UNITED STATES  
DEPARTMENT OF THE INTERIOR  
GEOLOGICAL SURVEY

UNITED STATES  
DEPARTMENT OF AGRICULTURE  
FOREST SERVICE

MONTROSE QUADRANGLE  
WEST VIRGINIA  
7.5-MINUTE SERIES (TOPOGRAPHIC)



Produced by the U.S. Geological Survey  
Revised by the U.S. Forest Service  
Areas outside the National Forest System lands may not have been revised  
Topography compiled 1964. Planimetry derived from imagery taken 1990  
Partial field check by U.S. Forest Service 1995  
North American Datum of 1927 (NAD 27). Projection and 10 000-foot ticks:  
West Virginia coordinate system, south and north zones (Lambert conformal conic)  
Blue 1000-meter Universal Transverse Mercator ticks, zone 17  
North American Datum of 1983 (NAD 83) is shown by dashed corner ticks  
The values of the shift between NAD 27 and NAD 83 for 7.5-minute  
intersections are obtainable from National Geodetic Survey NADCON software  
Non-National Forest System lands within the National Forest  
Inholdings may exist in other National or State reservations  
This map is not a legal land line or ownership document. Public lands are  
subject to change and leasing, and may have access restrictions; check  
with local offices. Obtain permission before entering private lands



THIS MAP COMPLIES WITH NATIONAL MAP ACCURACY STANDARDS  
FOR SALE BY U.S. GEOLOGICAL SURVEY, P.O. BOX 25286, DENVER, COLORADO 80225  
A FOLDER DESCRIBING TOPOGRAPHIC MAPS AND SYMBOLS IS AVAILABLE ON REQUEST



QUADRANGLE LOCATION

1	2	3	1 Nestorville
4	5	2 Colebank	
6	7	3 Saint George	
		4 Belington	
		5 Parsons	
		6 Junior	
		7 Elkins	
		8 Bowden	

ADJOINING 7.5' QUADRANGLES

Interstate	U.S.	State	County	National Forest, suitable for passenger cars	National Forest, suitable for high clearance vehicles	National Forest Trail	Primary highway	Secondary highway	Light-duty road	Paved	Gravel	Dirt	Composition unspecified	Unimproved; 4 wheel drive	Trail	Gate
1	2	3	4	5	6	7	8	9	10	11	12	13	14	15	16	17

MONTROSE, WV  
1995  
DMA 5062 III SE - SERIES V854

ARTHUR H. ROBINSON MAP LIBRARY  
University of Wisconsin-Madison  
U.S. Regional  
Depository Copy  
MAY 28 1999  
DO NOT DISCARD



ISBN 0-607-90811-4