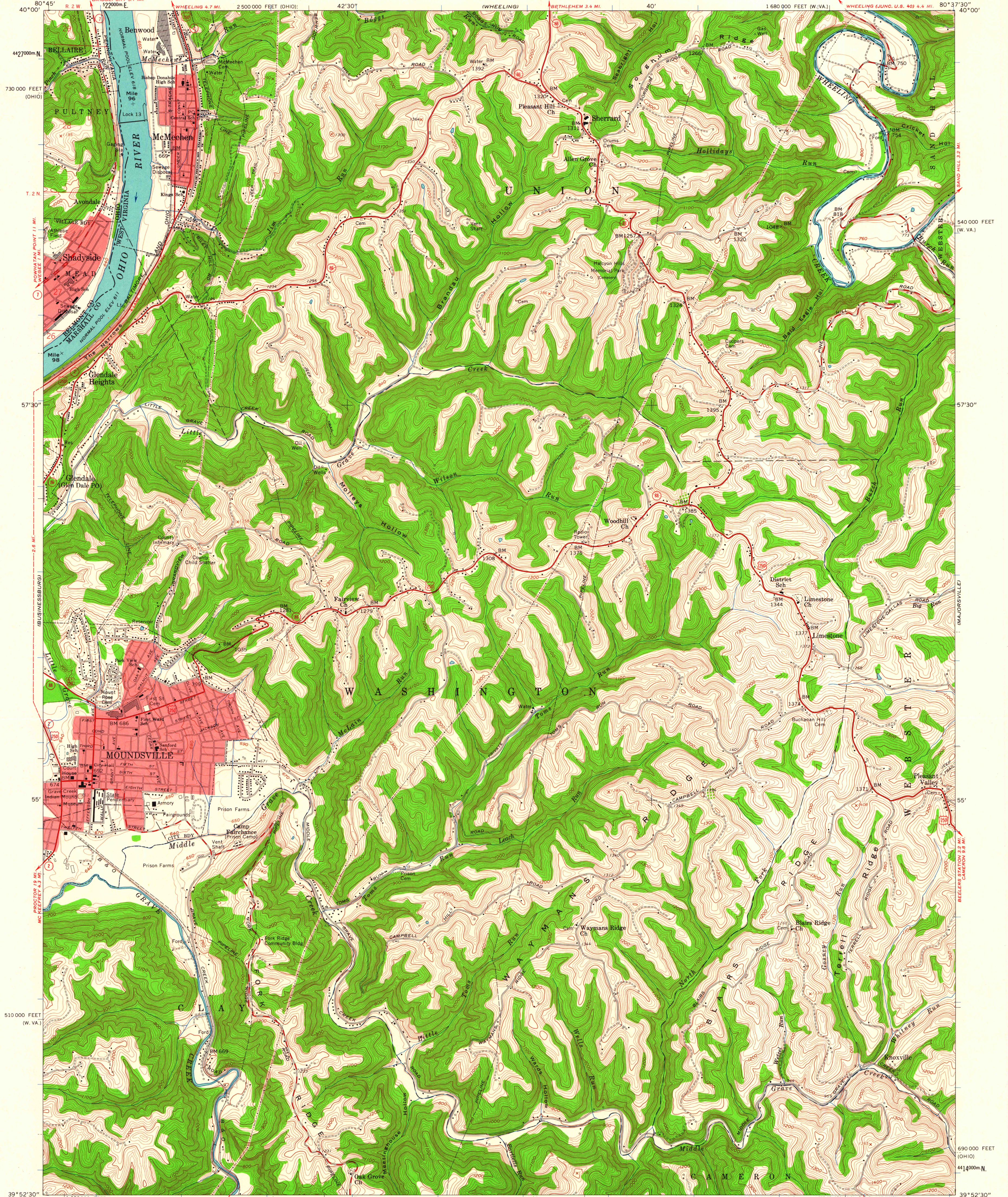


UNITED STATES  
DEPARTMENT OF THE INTERIOR  
GEOLOGICAL SURVEY

STATE OF OHIO  
DEPARTMENT OF HIGHWAYS  
DEPARTMENT OF NATURAL RESOURCES  
DIVISION OF GEOLOGICAL SURVEY

STATE OF WEST VIRGINIA  
REPRESENTED BY THE  
STATE OF WEST VIRGINIA GEOLOGICAL SURVEY  
AND OTHER STATE AGENCIES

MOUNDSVILLE QUADRANGLE  
WEST VIRGINIA-OHIO  
7.5 MINUTE SERIES (TOPOGRAPHIC)  
NW/4 CAMERON 15 QUADRANGLE



Mapped, edited, and published by the Geological Survey

Control by USGS and USC&GS

Topography from aerial photographs by photogrammetric methods

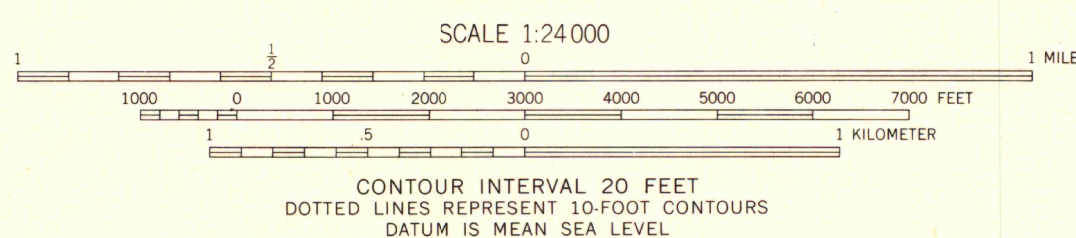
Aerial photographs taken 1956, 1957, and 1958. Field check 1960

Polyconic projection. 1927 North American datum  
10 000-foot grids based on West Virginia coordinate system,  
north zone, and Ohio coordinate system, south zone  
1000-meter Universal Transverse Mercator grid ticks,  
zone 17, shown in blue

The state boundary as shown represents the approximate position  
of the low water line as determined from U.S. Corps of Engineers,  
Ohio River charts, surveyed 1913, and supplementary information  
Red tint indicates areas in which only landmark buildings are shown  
Land lines based on the Ohio River Base

Ohio portion lies within the Seven Ranges

TRUE NORTH  
MAGNETIC NORTH  
APPROXIMATE MEAN  
DECLINATION, 1960



THIS MAP COMPLIES WITH NATIONAL MAP ACCURACY STANDARDS  
FOR SALE BY U. S. GEOLOGICAL SURVEY, WASHINGTON 25, D. C.  
A FOLDER DESCRIBING TOPOGRAPHIC MAPS AND SYMBOLS IS AVAILABLE ON REQUEST

ROAD CLASSIFICATION  
Heavy-duty ——— Light-duty ———  
Medium-duty ——— Unimproved dirt ———  
U. S. Route ——— State Route ———

MOUNDSVILLE, W. VA.-OHIO  
NW/4 CAMERON 15 QUADRANGLE  
N3952.5—W8037.5/7.5

MAP AND AIR PHOTO LIBRARY  
University of Wisconsin

1960