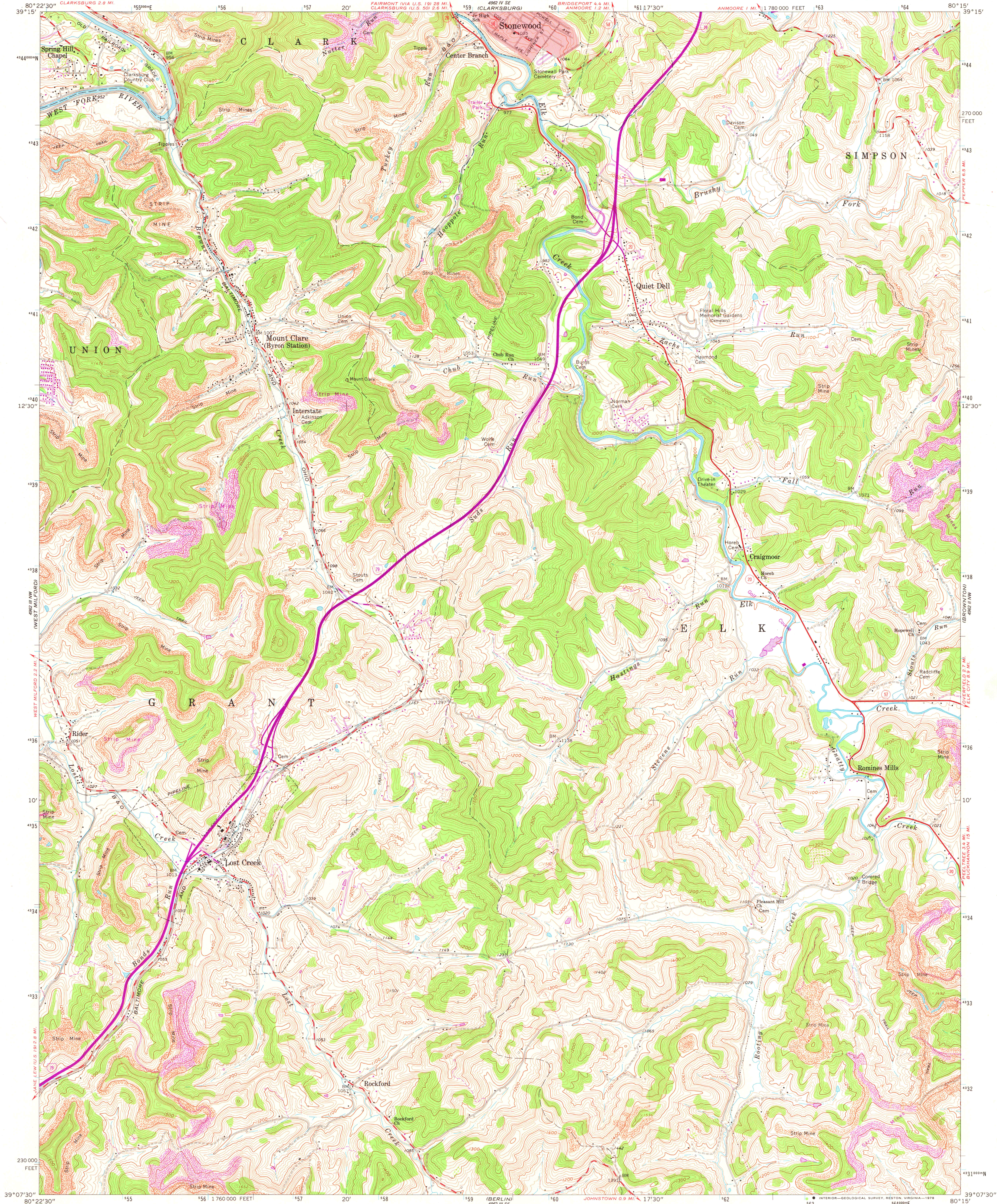


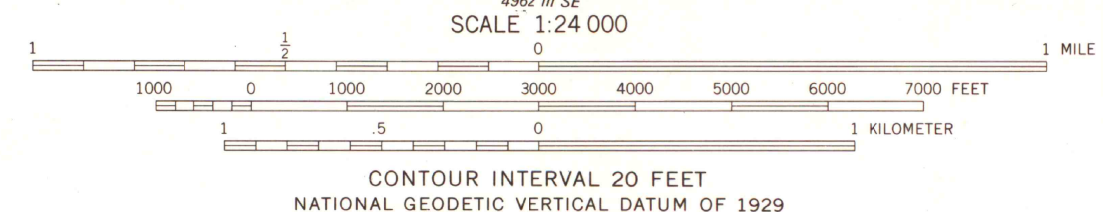
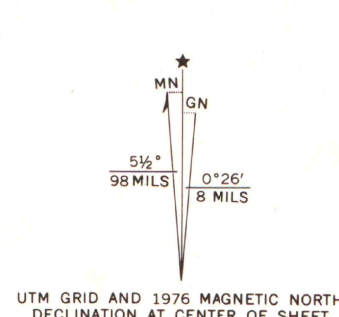
UNITED STATES  
DEPARTMENT OF THE INTERIOR  
GEOLOGICAL SURVEY

STATE OF WEST VIRGINIA  
REPRESENTED BY THE  
STATE OF WEST VIRGINIA GEOLOGICAL SURVEY  
AND OTHER STATE AGENCIES

MOUNT CLARE QUADRANGLE  
WEST VIRGINIA—HARRISON CO.  
7.5 MINUTE SERIES (TOPOGRAPHIC)



Mapped, edited, and published by the Geological Survey  
Control by USGS and USC&GS  
Topography by photogrammetric methods from aerial  
photographs taken 1957. Field checked 1961  
Polyconic projection. 1927 North American datum  
10,000-foot grid based on West Virginia coordinate system,  
north zone  
1000-meter Universal Transverse Mercator grid ticks,  
zone 17, shown in blue  
Fine red dashed lines indicate selected fence and field lines where  
generally visible on aerial photographs. This information is unchecked  
Red tint indicates area in which only landmark buildings are shown  
All wells shown are oil wells  
Revisions shown in purple compiled from aerial photographs  
taken 1976. This information not field checked



ROAD CLASSIFICATION  
Heavy-duty ——— Light-duty ———  
Medium-duty ——— Unimproved dirt ———  
Interstate Route ——— State Route ———  
MAP AND AIR PHOTO  
LIBRARY  
SEP 22 1978  
University of Wisconsin  
Madison  
MOUNT CLARE, W. VA.  
NE/4 WESTON 15' QUADRANGLE  
N3907.5—W8015/7.5  
1961  
PHOTOREVISED 1976  
AMS 4962 III NE-SERIES V854