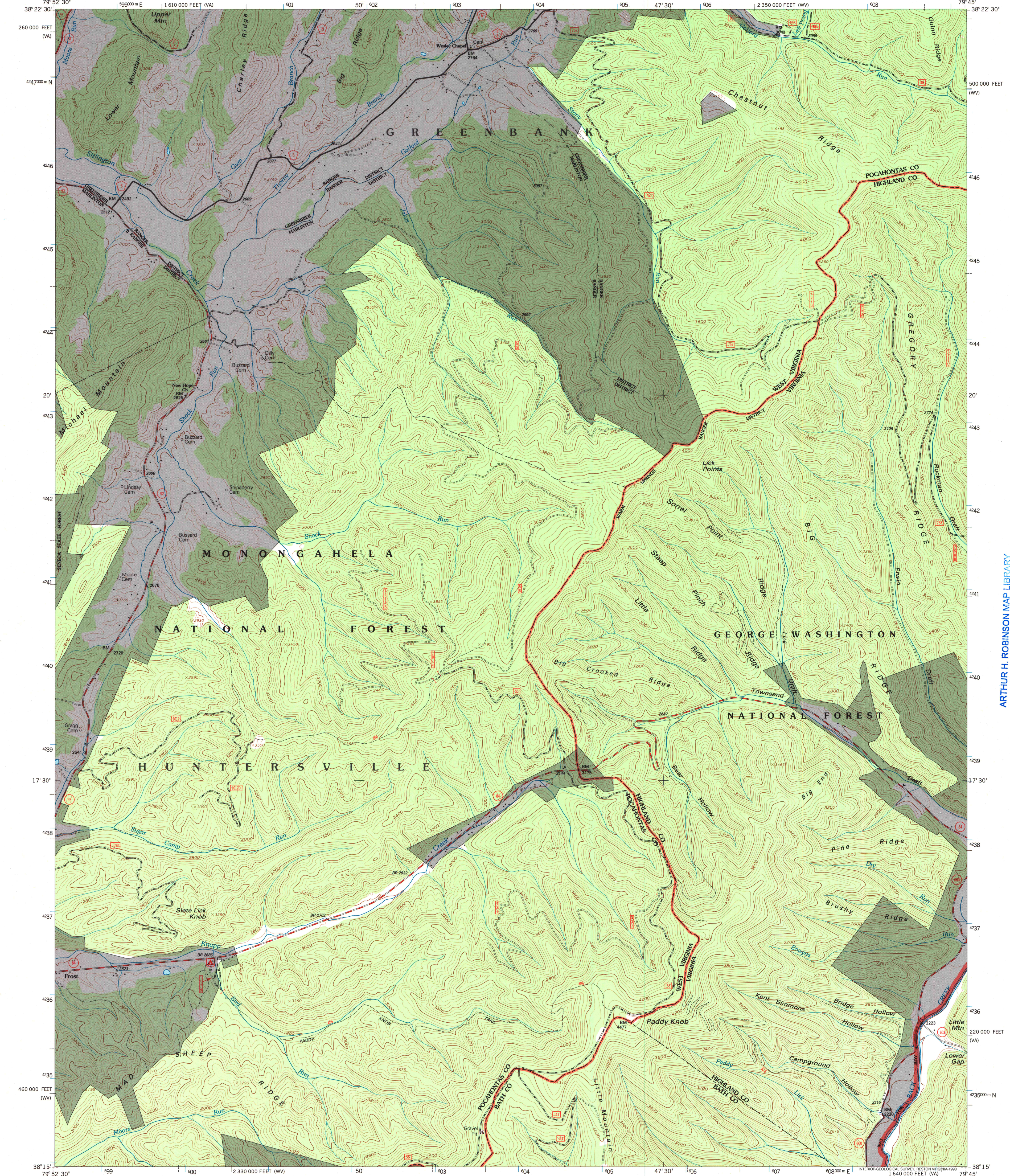


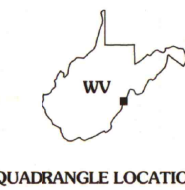
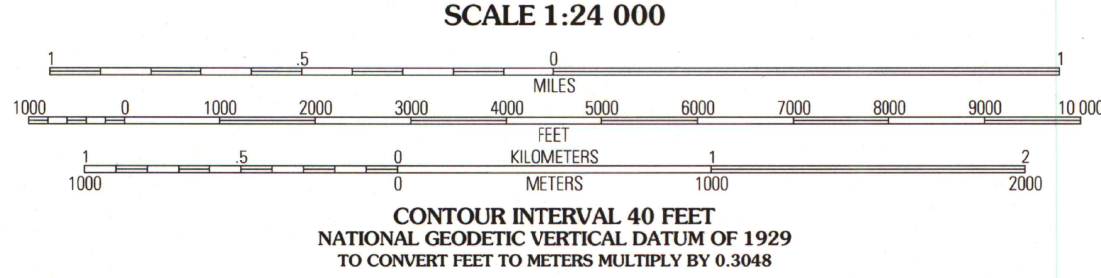
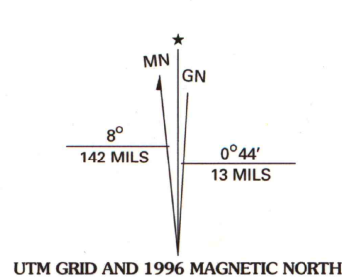
UNITED STATES  
DEPARTMENT OF THE INTERIOR  
GEOLOGICAL SURVEY

UNITED STATES  
DEPARTMENT OF AGRICULTURE  
FOREST SERVICE

PADDY KNOB QUADRANGLE  
WEST VIRGINIA-VIRGINIA  
7.5-MINUTE SERIES (TOPOGRAPHIC)



Produced by the U.S. Geological Survey  
Revised by the U.S. Forest Service  
Topography compiled 1958. Planimetry derived from imagery taken 1991  
Partial field check by U.S. Forest Service 1995  
North American Datum of 1927 (NAD 27). Projection and 10 000-foot ticks:  
West Virginia coordinate system, south zone, and Virginia coordinate system, north zone  
(Lambert conformal conic). Blue 1000-meter Universal Transverse Mercator ticks, zone 17  
North American Datum of 1983 (NAD 83) is shown by dashed corner ticks  
The values of the shift between NAD 27 and NAD 83 for 7.5-minute  
intersections are obtainable from National Geodetic Survey NADCON software  
Non-National Forest System lands within the National Forest  
Inholdings may exist in other National or State reservations  
This map is not a legal land line or ownership document. Public lands are  
subject to change and leasing, and may have access restrictions; check  
with local offices. Obtain permission before entering private lands



1	2	3	1 Cass
			2 Green Bank
			3 Hightown
4		5	4 Clover Lick
			5 Mustoe
			6 Minnehaha Springs
6	7	8	7 Sunrise
			8 Burnsville

ADJOINING 7.5' QUADRANGLES

HIGHWAYS AND ROADS	
Interstate	1
U. S.	2
State	3
County	4
National Forest, suitable for passenger cars	5
National Forest, suitable for high clearance vehicles	6
National Forest Trail	7
Primary highway	8
Secondary highway	9
Light-duty road	10
Paved	11
Gravel	12
Dirt	13
Composition unspecified	14
Unimproved; 4 wheel drive	15
Trail	16
Gate	17

PADDY KNOB, WV-VA  
1995  
DMA 5060 IV SE - SERIES V854

ARTHUR H. ROBINSON MAP LIBRARY  
University of Wisconsin-Madison

U.S. Regional  
Depository Copy  
DO NOT DISCARD

APR 27 1999

139N 0-407-40765-1  
9 780607 907858