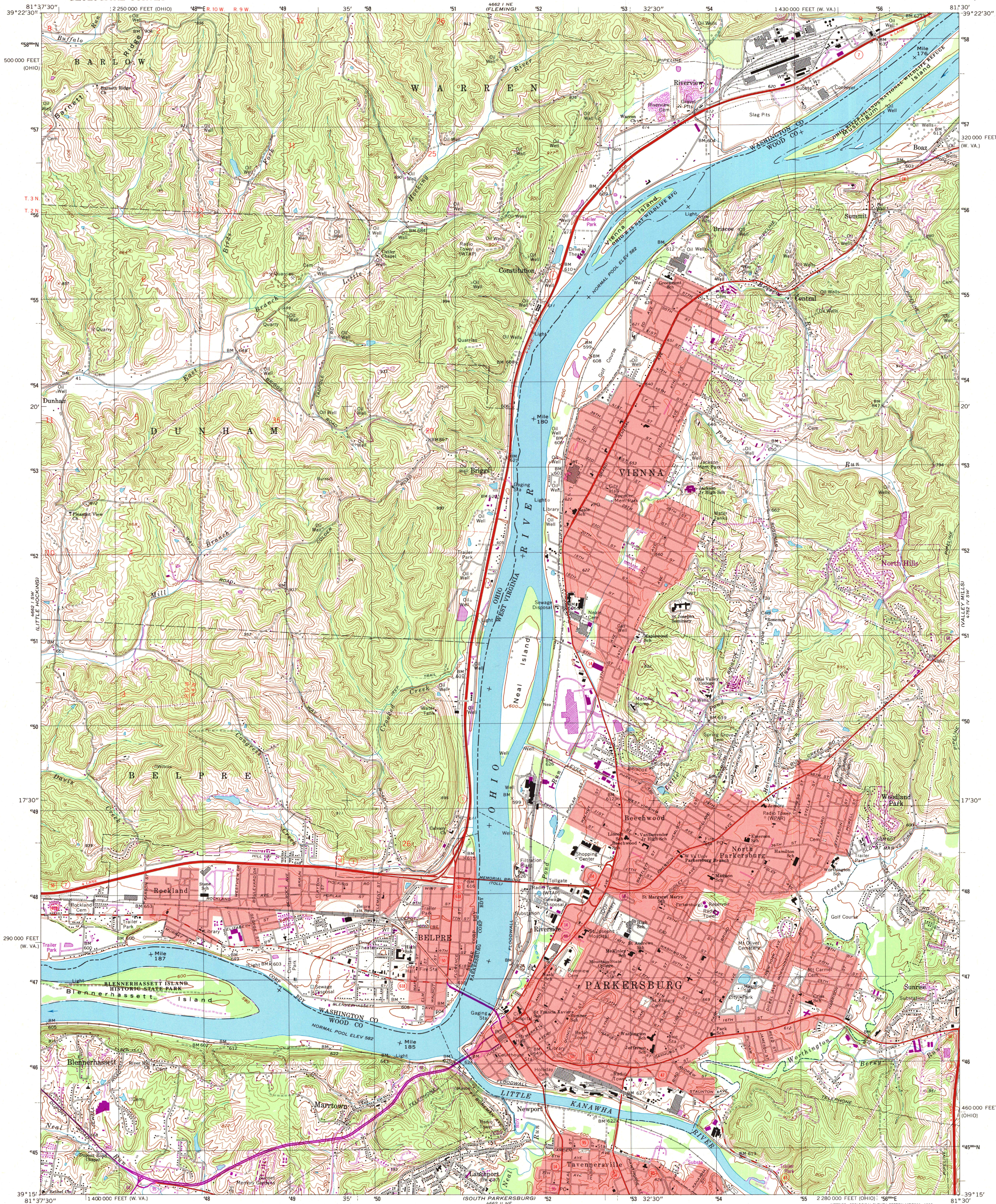


UNITED STATES  
DEPARTMENT OF THE INTERIOR  
GEOLOGICAL SURVEY

PARKERSBURG QUADRANGLE  
WEST VIRGINIA-OHIO  
7.5 MINUTE SERIES (TOPOGRAPHIC)



Produced by the United States Geological Survey  
Topography compiled 1955. Planimetry derived from imagery taken  
1987. Photorevised using imagery dated 1994; no major culture  
or drainage changes observed. Survey control current as of 1969  
boundaries, other than corporate, revised 1998  
North American Datum of 1983 (NAD 83) is shown by dashed  
corner ticks. The values of the shift between NAD 27 and NAD 83  
for 7.5-minute intersections are obtainable from National Geodetic  
Survey NADCON software.  
The state boundary as shown represents the approximate position of  
the low water line as determined from U.S. Corps of Engineers  
Ohio River charts, surveyed 1913, and supplementary information.  
There may be private inholdings within the boundaries of  
the National or State reservations shown on this map.  
Land lines based on the Ohio River Base. Dotted land lines established  
by private subdivision of Ohio Company Purchase.  
Information shown in purple may not meet USGS content standards  
and may conflict with previously mapped contours.

UTM GRID AND 1997 MAGNETIC NORTH  
DECLINATION AT CENTER OF SHEET

SCALE 1:24,000  
CONTOUR INTERVAL 20 FEET  
DOTTED LINES REPRESENT 10-FOOT CONTOURS  
NATIONAL GEODETIC VERTICAL DATUM OF 1929  
TO CONVERT FROM FEET TO METERS, MULTIPLY BY 0.3048

THIS MAP COMPLIES WITH NATIONAL MAP ACCURACY STANDARDS  
FOR SALE BY U.S. GEOLOGICAL SURVEY, P.O. BOX 25286, DENVER, COLORADO 80225  
A FOLDER DESCRIBING TOPOGRAPHIC MAPS AND SYMBOLS IS AVAILABLE ON REQUEST



ROAD CLASSIFICATION  
Primary highway, all weather, hard surface  
Secondary highway, all weather, hard surface  
Light-duty road, all weather, improved surface  
Unimproved road, fair or dry weather  
Interstate Route  
U.S. Route  
State Route

A.H. ROBINSON  
MAP LIBRARY

PARKERSBURG, W. VA.-OHIO

U.S. Regional  
Depository Copy  
DO NOT DISCARD  
SEP 02 1998  
University of Wisconsin  
Madison

1994  
NIMA 4662 I SE-SERIES V852

