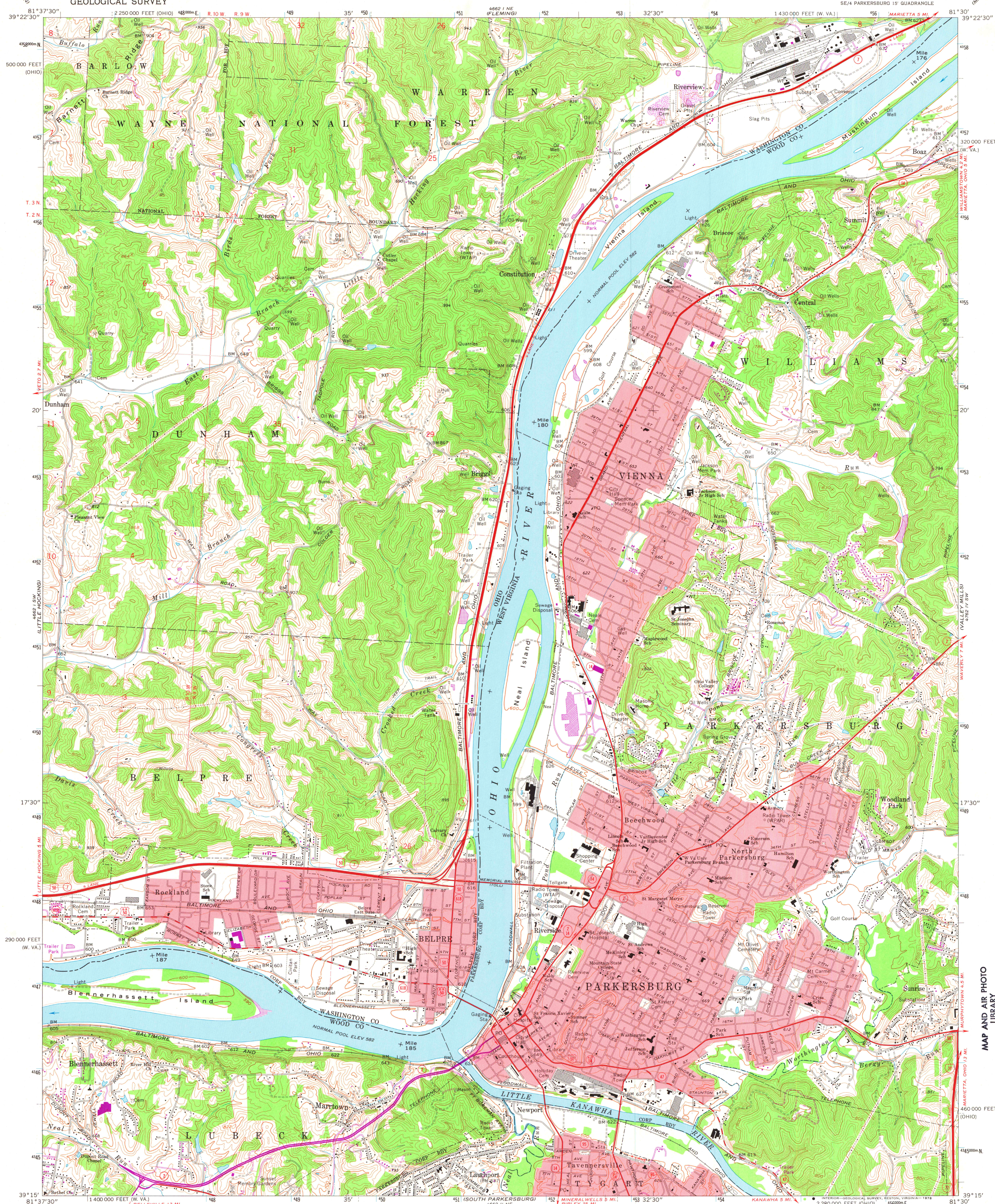


UNITED STATES  
DEPARTMENT OF THE INTERIOR  
GEOLOGICAL SURVEY

PARKERSBURG QUADRANGLE  
WEST VIRGINIA—OHIO  
7.5 MINUTE SERIES (TOPOGRAPHIC)



Mapped, edited, and published by the Geological Survey  
Revised in cooperation with State of Ohio agencies  
Control by USGS, USC&GS, and USCE  
Topography by photogrammetric methods from aerial photographs  
taken 1955. Field checked 1957.  
Revised from aerial photographs taken 1968. Field checked 1969  
Polyconic projection. 1927 North American datum  
10,000-foot grids based on West Virginia coordinate system, north  
zone, and Ohio coordinate system, south zone. 1000-meter Universal  
Transverse Mercator grid ticks, zone 17, shown in blue  
Fine red dashed lines indicate selected fence and field lines where  
generally visible on aerial photographs. This information is unchecked  
Red tint indicates areas in which only landmark buildings are shown  
The state boundary as shown represents the approximate position of  
the low water line as determined from U.S. Corps of Engineers  
Ohio River charts, surveyed 1913, and supplementary information  
Land lines based on Ohio River Base. Dotted land lines established  
by private subdivision of Ohio Company Purchase

UTM GRID AND 1975 MAGNETIC NORTH  
DECLINATION AT CENTER OF SHEET

SCALE 1:24,000  
1 000 0 1000 2000 3000 4000 5000 6000 7000 FEET  
1 KILOMETER  
CONTOUR INTERVAL 20 FEET  
DOTTED LINES REPRESENT 10-FOOT CONTOURS  
NATIONAL GEODETIC VERTICAL DATUM OF 1929

THIS MAP COMPLIES WITH NATIONAL MAP ACCURACY STANDARDS  
FOR SALE BY U.S. GEOLOGICAL SURVEY, RESTON, VIRGINIA 22092  
A FOLDER DESCRIBING TOPOGRAPHIC MAPS AND SYMBOLS IS AVAILABLE ON REQUEST



ROAD CLASSIFICATION  
Primary highway, all weather, Light-duty road, all weather,  
hard surface improved surface  
Secondary highway, all weather, Unimproved road, fair or dry  
hard surface weather  
Interstate Route U.S. Route State Route

PARKERSBURG, W. VA.—OHIO  
SE/4 PARKERSBURG 15' QUADRANGLE  
N3915—W8130/7.5

1969  
PHOTOREVISED 1975  
AMS 4662 I SE—SERIES V854

Revisions shown in purple compiled in cooperation with  
States of West Virginia and Ohio agencies from aerial  
photographs taken 1975. This information not field checked  
Portions of Ohio-West Virginia boundary in dispute, not shown

MAP AND AIR PHOTO  
LIBRARY

AUG 10 1978

University of Wisconsin  
Madison