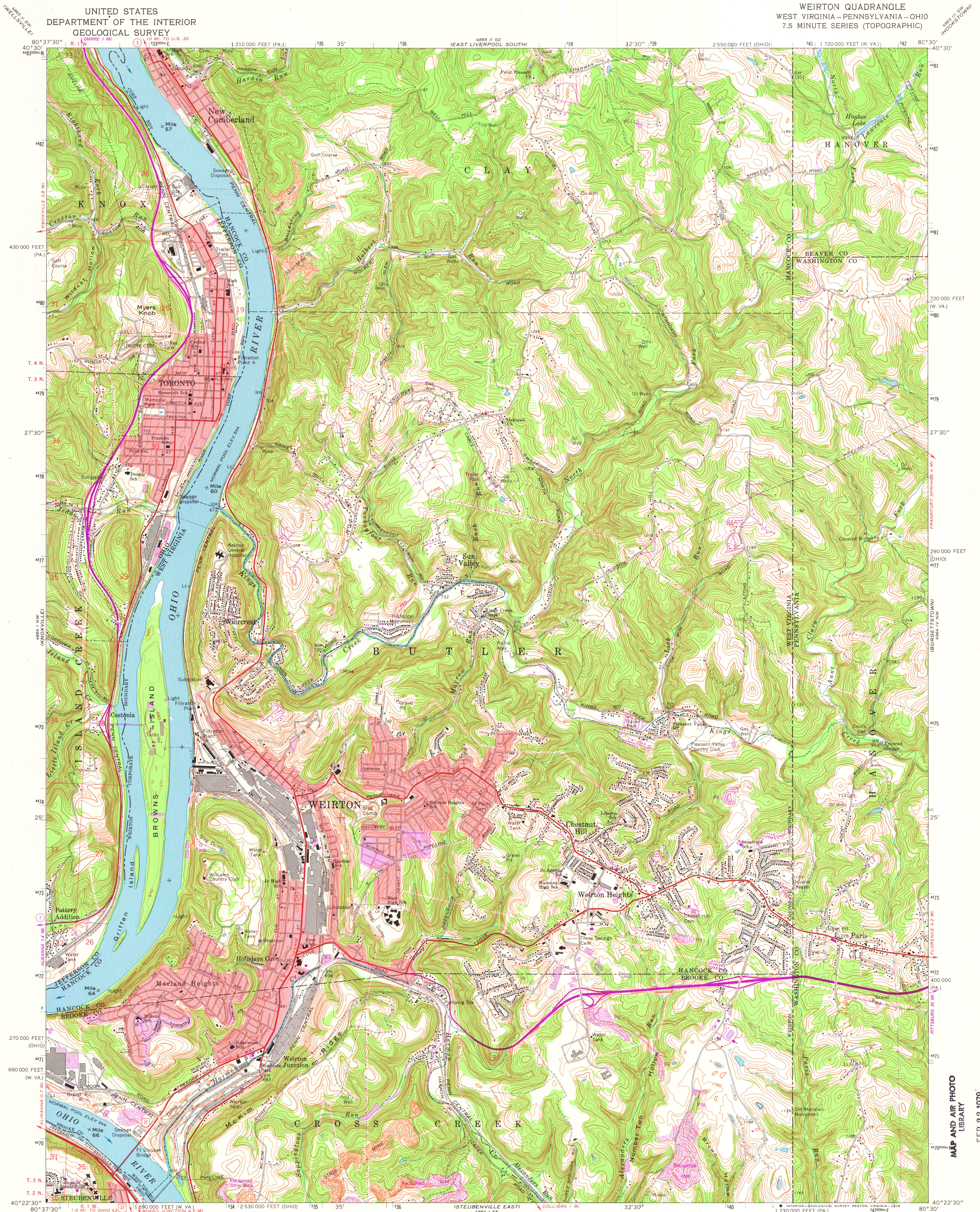


UNITED STATES
DEPARTMENT OF THE INTERIOR
GEOLOGICAL SURVEY

WEIRTON QUADRANGLE
WEST VIRGINIA-PENNSYLVANIA-OHIO
7.5 MINUTE SERIES (TOPOGRAPHIC)

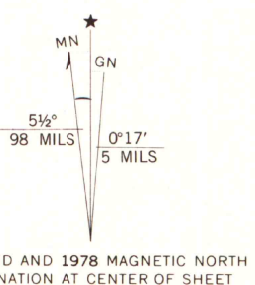


MAP AND AIR PHOTO
LIBRARY

SEP 22 1978

University of Wisconsin
Madison

Mapped, edited, and published by the Geological Survey
Revised in cooperation with State of Ohio agencies
Control by USGS, USC&GS, and USCE
Topography by photogrammetric methods from aerial
photographs taken 1954. Field checked 1958. Revised
from aerial photographs taken 1966. Field checked 1968
Polyconic projection. 1927 North American datum
10,000-foot grids based on West Virginia coordinate system, north zone,
Pennsylvania coordinate system, south zone, and Ohio coordinate system,
north zone. 1000-meter Universal Transverse Mercator grid ticks,
zone 17, shown in blue
Fine red dashed lines indicate selected fence and field lines where
generally visible on aerial photographs. This information is unchecked
The state boundary as shown represents the approximate position of the
low water line as determined from U.S. Corps of Engineers, Ohio River
charts, surveyed 1913, and supplementary information
Red tint indicates areas in which only landmark buildings are shown
Ohio areas lie within the Old Seven Ranges. Land lines based on the Ohio River Base



SCALE 1:24,000
CONTOUR INTERVAL 20 FEET
DOTTED LINES REPRESENT 10-FOOT CONTOURS
NATIONAL GEODETIC VERTICAL DATUM OF 1929

THIS MAP COMPLIES WITH NATIONAL MAP ACCURACY STANDARDS
FOR SALE BY U.S. GEOLOGICAL SURVEY, RESTON, VIRGINIA 22092
A FOLDER DESCRIBING TOPOGRAPHIC MAPS AND SYMBOLS IS AVAILABLE ON REQUEST

Revisions shown in purple compiled in cooperation with
State of Ohio agencies from aerial photographs taken
1976. Map edited 1978. This information not field checked
Purple tint indicates extension of urban areas
Portions of Ohio-West Virginia boundary in dispute, not shown



ROAD CLASSIFICATION
Primary highway, all weather, hard surface
Light-duty road, all weather, improved surface
Unimproved road, fair or dry weather
U.S. Route
State Route

WEIRTON, W. VA. - PA. - OHIO

N4022.5-W8030/7.5

1968
PHOTOREVISED 1978
AMS 4864 I NE-SERIES V854