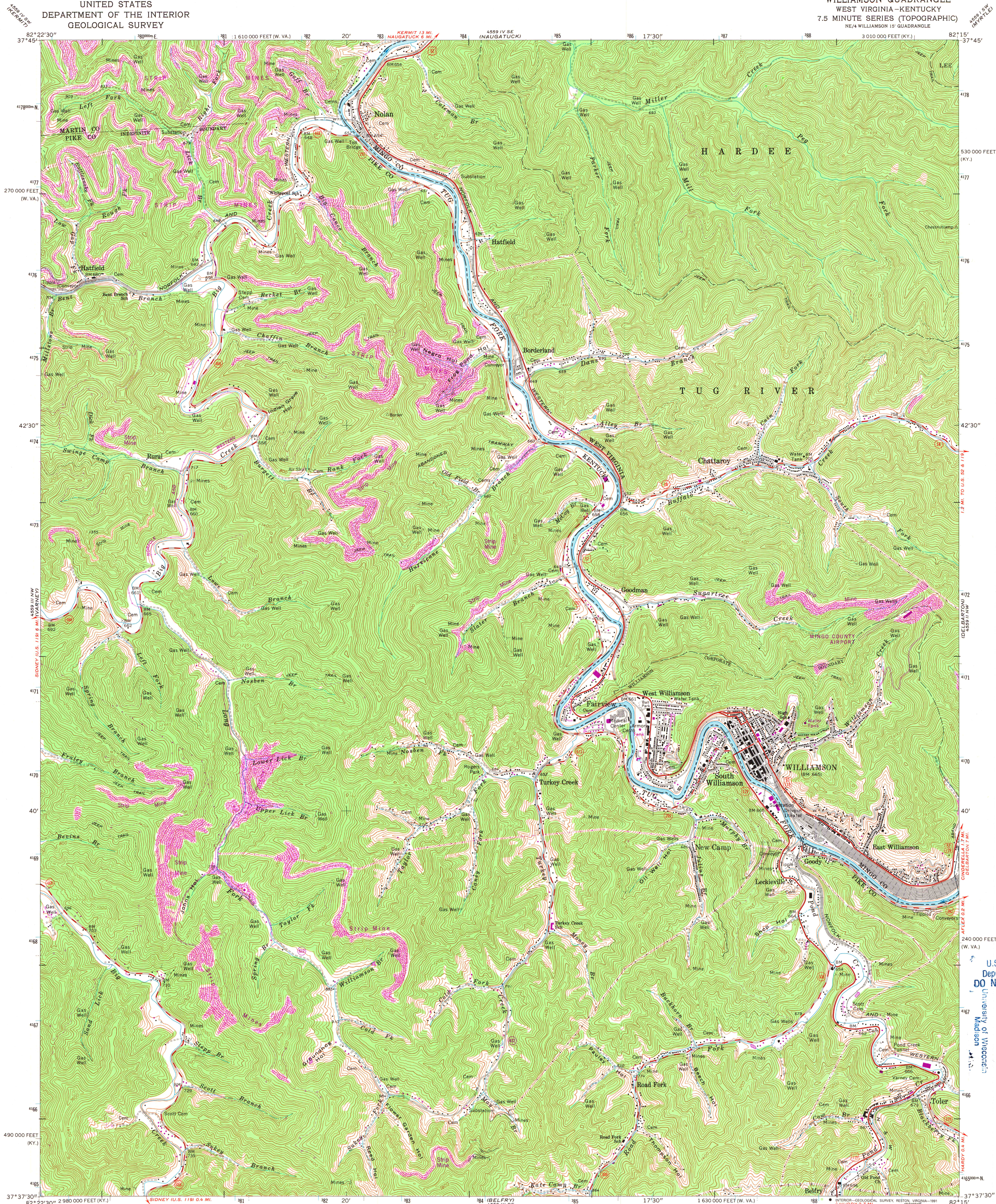


UNITED STATES  
DEPARTMENT OF THE INTERIOR  
GEOLOGICAL SURVEY

WILLIAMSON QUADRANGLE  
WEST VIRGINIA-KENTUCKY  
7.5 MINUTE SERIES (TOPOGRAPHIC)  
NE 1/4 WILLIAMSON 15' QUADRANGLE  
NE 1/4 WILLIAMSON 15' QUADRANGLE



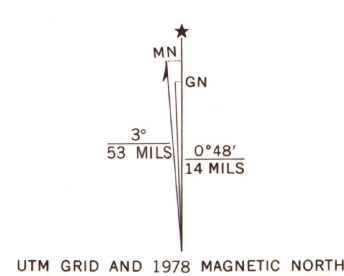
Mapped, edited, and published by the Geological Survey  
in cooperation with Kentucky Geological Survey  
and West Virginia agencies

Control by USGS, USC&GS, and USCE  
Topography in Kentucky by photogrammetric methods from aerial  
photographs taken 1951. Field checked 1954. Revised 1964  
Topography in West Virginia by photogrammetric methods from aerial  
photographs taken 1958. Field checked 1964

Polyconic projection. 1927 North American datum  
10,000-foot grids based on Kentucky coordinate system, south zone  
and West Virginia coordinate system, south zone  
1000-meter Universal Transverse Mercator grid ticks,  
zone 17, shown in blue

Revisions shown in purple compiled from aerial photographs  
taken 1975 and other source data. This information  
not field checked. Map edited 1978

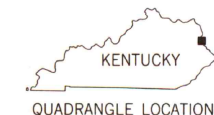
Map photoinspected 1987  
No major culture or drainage changes observed



SCALE 1:24 000  
1 000 0 1000 2000 3000 4000 5000 6000 7000 FEET  
1 5 0 1 KILOMETER  
CONTOUR INTERVAL 40 FEET  
NATIONAL GEODETIC VERTICAL DATUM OF 1929

THIS MAP COMPLIES WITH NATIONAL MAP ACCURACY STANDARDS  
FOR SALE BY U.S. GEOLOGICAL SURVEY, DENVER, COLORADO 80225, OR RESTON, VIRGINIA 22092  
KENTUCKY GEOLOGICAL SURVEY, LEXINGTON, KENTUCKY 40506  
AND KENTUCKY DEPARTMENT OF COMMERCE, FRANKFORT, KENTUCKY 40601  
A FOLDER DESCRIBING TOPOGRAPHIC MAPS AND SYMBOLS IS AVAILABLE ON REQUEST

The difference between 1927 North American Datum and North  
American Datum of 1983 (NAD 83) for 7.5-minute intersections  
is given in USGS Bulletin 1875. The NAD 83 is shown by  
dashed corner ticks



ROAD CLASSIFICATION  
Heavy-duty ——— Light-duty ———  
Medium-duty ——— Unimproved dirt ———  
U.S. Route ——— State Route ———

WILLIAMSON, W. VA.—KY.  
NE 1/4 WILLIAMSON 15' QUADRANGLE  
37082F3-TF-024  
PHOTOINSPECTED 1987  
1964  
PHOTOREVISED 1978  
DMA 4559 III NE—SERIES V853

U.S. Regional  
Depository Copy  
DO NOT DISCARD

DEC 10 1991  
A.H. ROBINSON  
MAP LIBRARY  
University of Wisconsin  
Madison