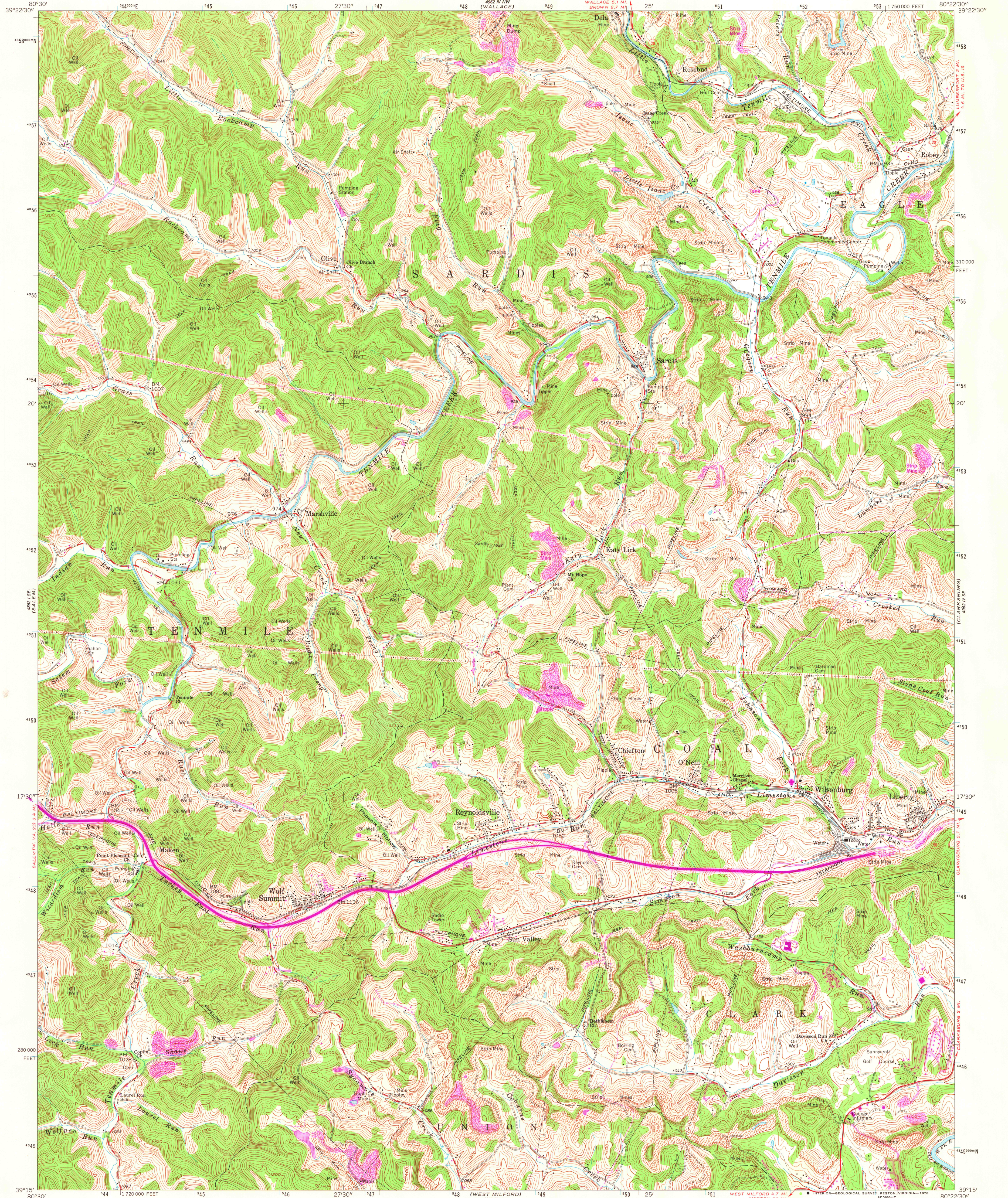
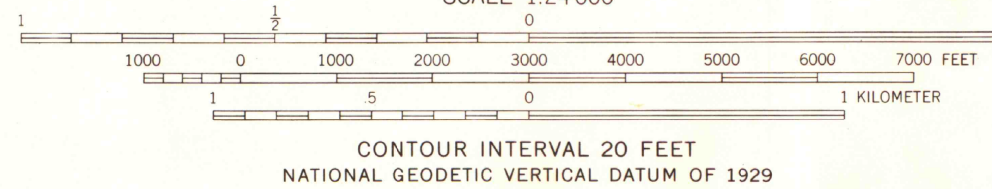
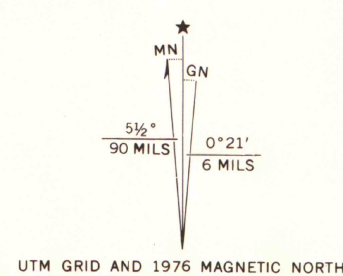


UNITED STATES
DEPARTMENT OF THE INTERIOR
GEOLOGICAL SURVEY

WOLF SUMMIT QUADRANGLE
WEST VIRGINIA—HARRISON CO.
7.5 MINUTE SERIES (TOPOGRAPHIC)
SW/4 CLARKSBURG 15' QUADRANGLE



Mapped, edited, and published by the Geological Survey
Control by USGS and USC&GS
Topography by photogrammetric methods from aerial
photographs taken 1957. Field checked 1960
Polyconic projection. 1927 North American datum
10,000-foot grid based on West Virginia coordinate system,
north zone
1000-meter Universal Transverse Mercator grid ticks,
zone 17, shown in blue
Fine red dashed lines indicate selected fence and field lines where
generally visible on aerial photographs. This information is unchecked
Unlabeled wells are gas wells
Revisions shown in purple compiled from aerial photographs
taken 1976. This information not field checked



SEP 22 1978
University of Wisconsin
Madison

WOLF SUMMIT, W. VA.
SW/4 CLARKSBURG 15' QUADRANGLE
N 3915—W 8022.5/7.5
1960
PHOTOREVISED 1976
AMS 4962 IV SW—SERIES 7854

c.g.99- right side water damaged; corner stained alt