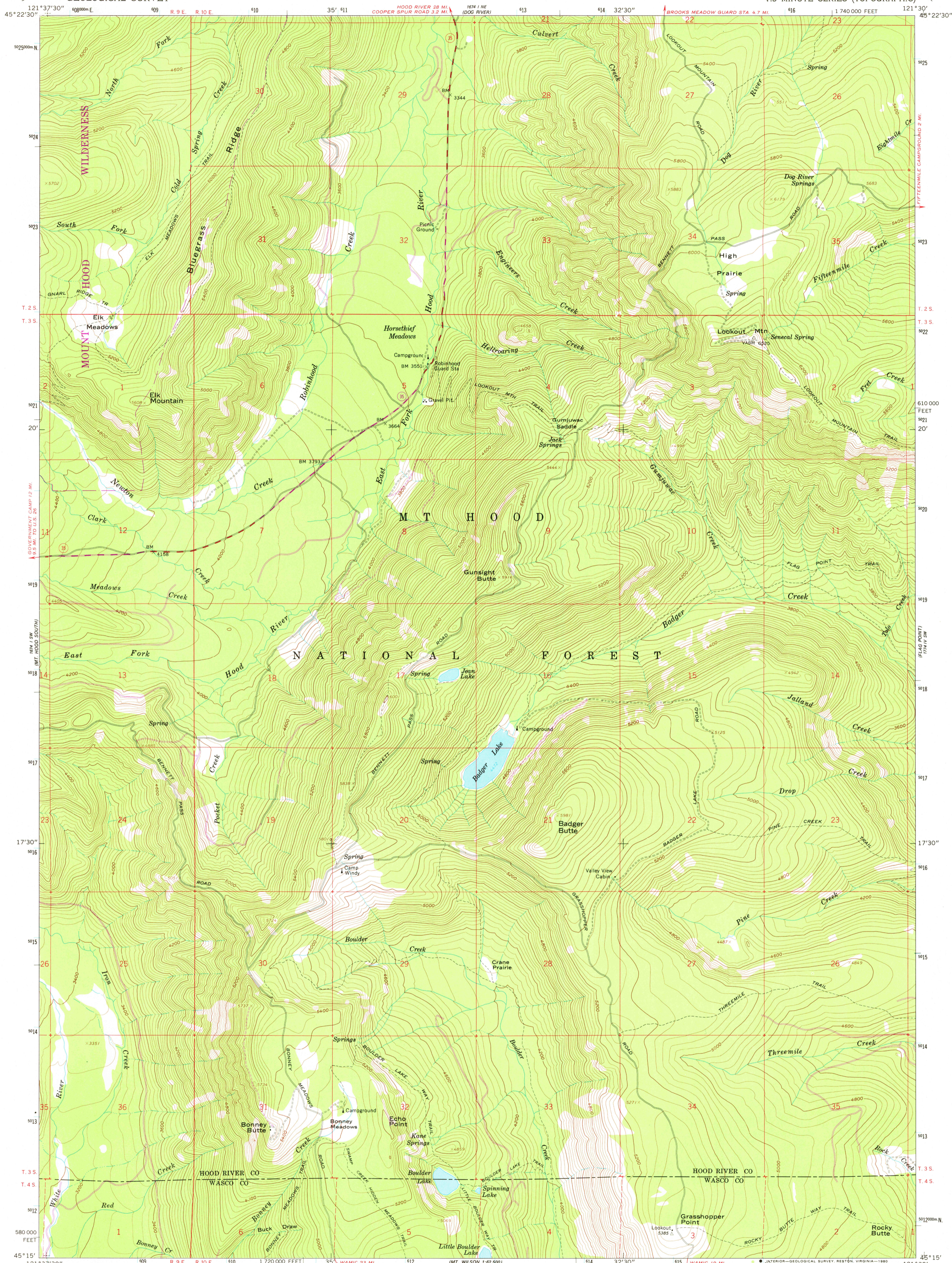


UNITED STATES
DEPARTMENT OF THE INTERIOR
GEOLOGICAL SURVEY

BADGER LAKE QUADRANGLE
OREGON
7.5 MINUTE SERIES (TOPOGRAPHIC)



Mapped, edited, and published by the Geological Survey

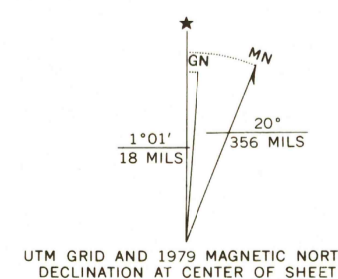
Control by USGS and NOS/NOAA

Topography by photogrammetric methods from aerial photographs taken 1956. Field checked 1962

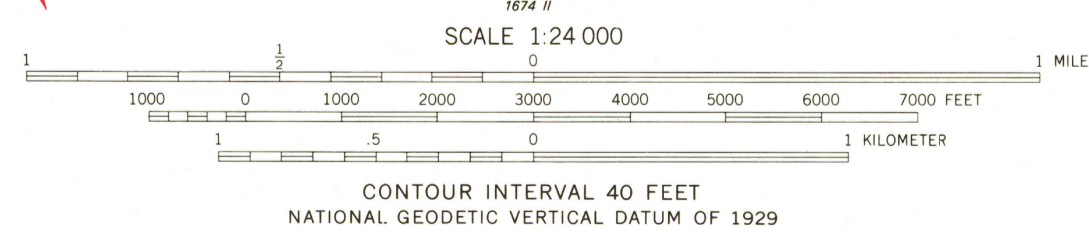
Polyconic projection. 1927 North American datum 10,000-foot grid based on Oregon coordinate system, north zone 1000-meter Universal Transverse Mercator grid ticks, zone 10, shown in blue

To place on the predicted North American Datum 1983 move the projection lines 21 meters north and 92 meters east as shown by dashed corner ticks

There may be private inholdings within the boundaries of the National or State reservations shown on this map
Where omitted, land lines have not been established



UTM GRID AND 1979 MAGNETIC NORTH DECLINATION AT CENTER OF SHEET



FOR SALE BY U. S. GEOLOGICAL SURVEY, DENVER, COLORADO 80225, OR RESTON, VIRGINIA 22092
A FOLDER DESCRIBING TOPOGRAPHIC MAPS AND SYMBOLS IS AVAILABLE ON REQUEST



QUADRANGLE LOCATION

ROAD CLASSIFICATION
Heavy-duty ——— Light-duty ———
Unimproved dirt - - - - - State Route

USGS
Historical File
Topographic Division

BADGER LAKE, OREG.

N4515—W12130/7.5

1962
PHOTOREVISED 1979
DMA 1674 I SE—SERIES V892

Revisions shown in purple compiled by the U. S. Forest Service from aerial photographs taken 1973 and other source data
This information not field checked. Map edited by the Geological Survey 1979

JUN - 3 1980
2000