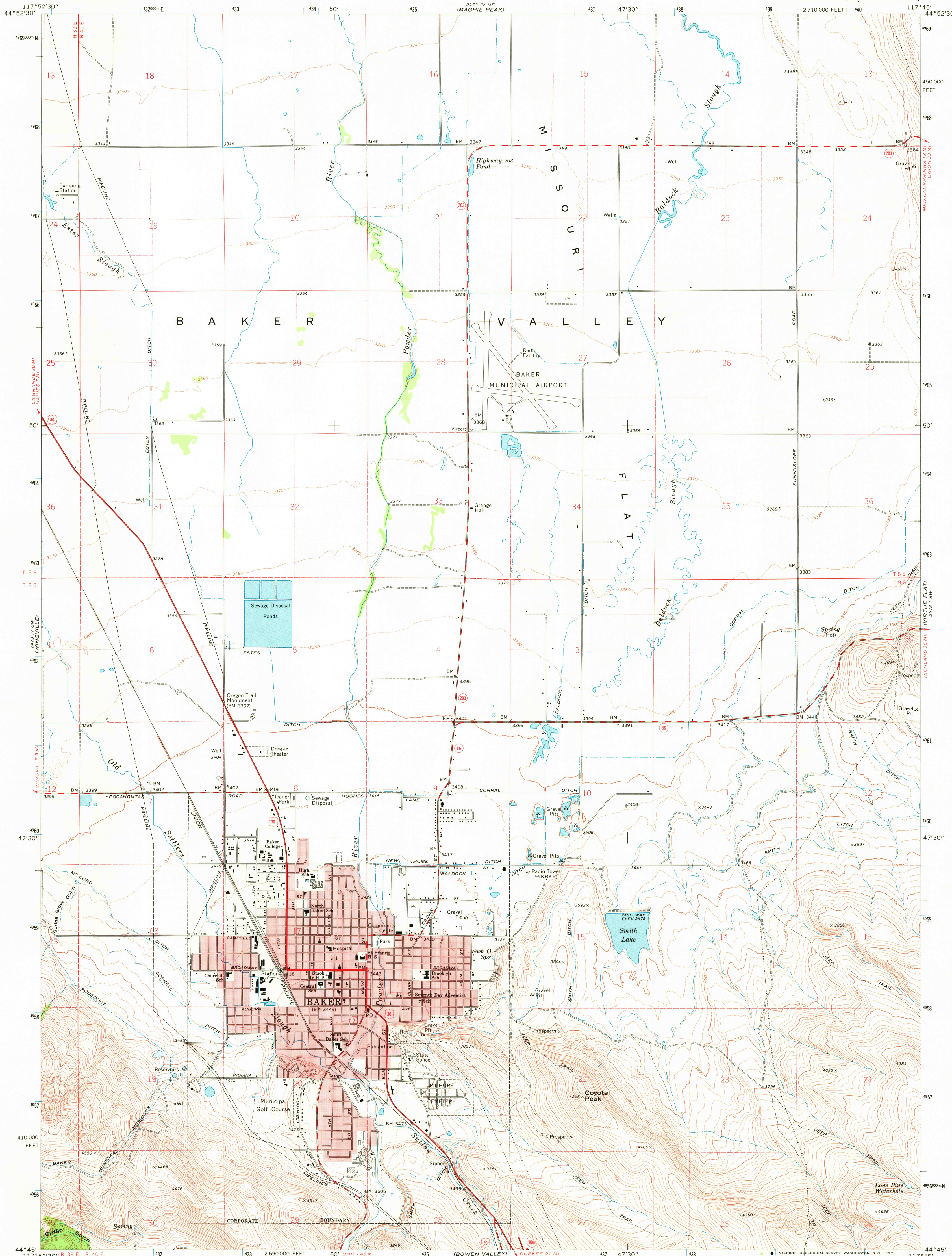


2473 IV NW
(HAINES)

UNITED STATES
DEPARTMENT OF THE INTERIOR
GEOLOGICAL SURVEY

BAKER QUADRANGLE
OREGON—BAKER CO.
7.5 MINUTE SERIES (TOPOGRAPHIC)

2473 I NW
(KEATING NW)



Mapped, edited, and published by the Geological Survey

Control by USGS, USC&GS, and State of Oregon

Topography by photogrammetric methods from aerial photographs taken 1966. Field checked 1967

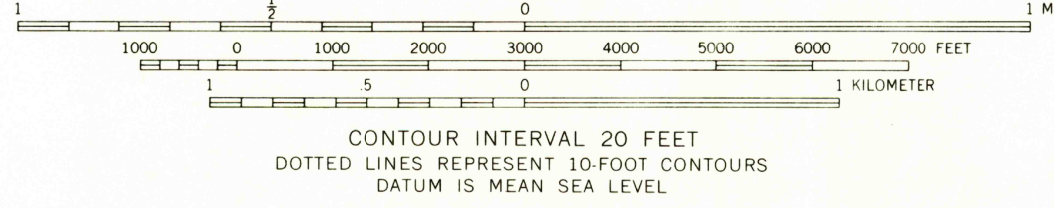
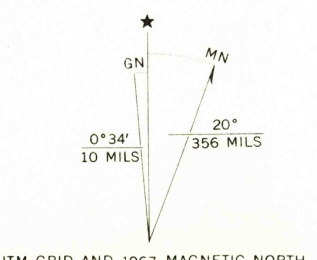
Polyconic projection. 1927 North American datum

10,000-foot grid based on Oregon coordinate system, north zone

1000-meter Universal Transverse Mercator grid ticks, zone 11, shown in blue

Red tint indicates areas in which only landmark buildings are shown

Fine red dashed lines indicate selected fence lines



ROAD CLASSIFICATION

Heavy-duty	Light-duty
Medium-duty	Unimproved dirt
Interstate Route	U.S. Route
	State Route

THIS MAP COMPLIES WITH NATIONAL MAP ACCURACY STANDARDS
FOR SALE BY U.S. GEOLOGICAL SURVEY, DENVER, COLORADO 80225, OR WASHINGTON, D.C. 20242
A FOLDER DESCRIBING TOPOGRAPHIC MAPS AND SYMBOLS IS AVAILABLE ON REQUEST

USGS
HISTORICAL FILE
TOPOGRAPHIC DIVISION

BAKER, OREG.
N4445—W11745/7.5

NOV 3 1971

1967
AMS 2473 IV SE—SERIES V892