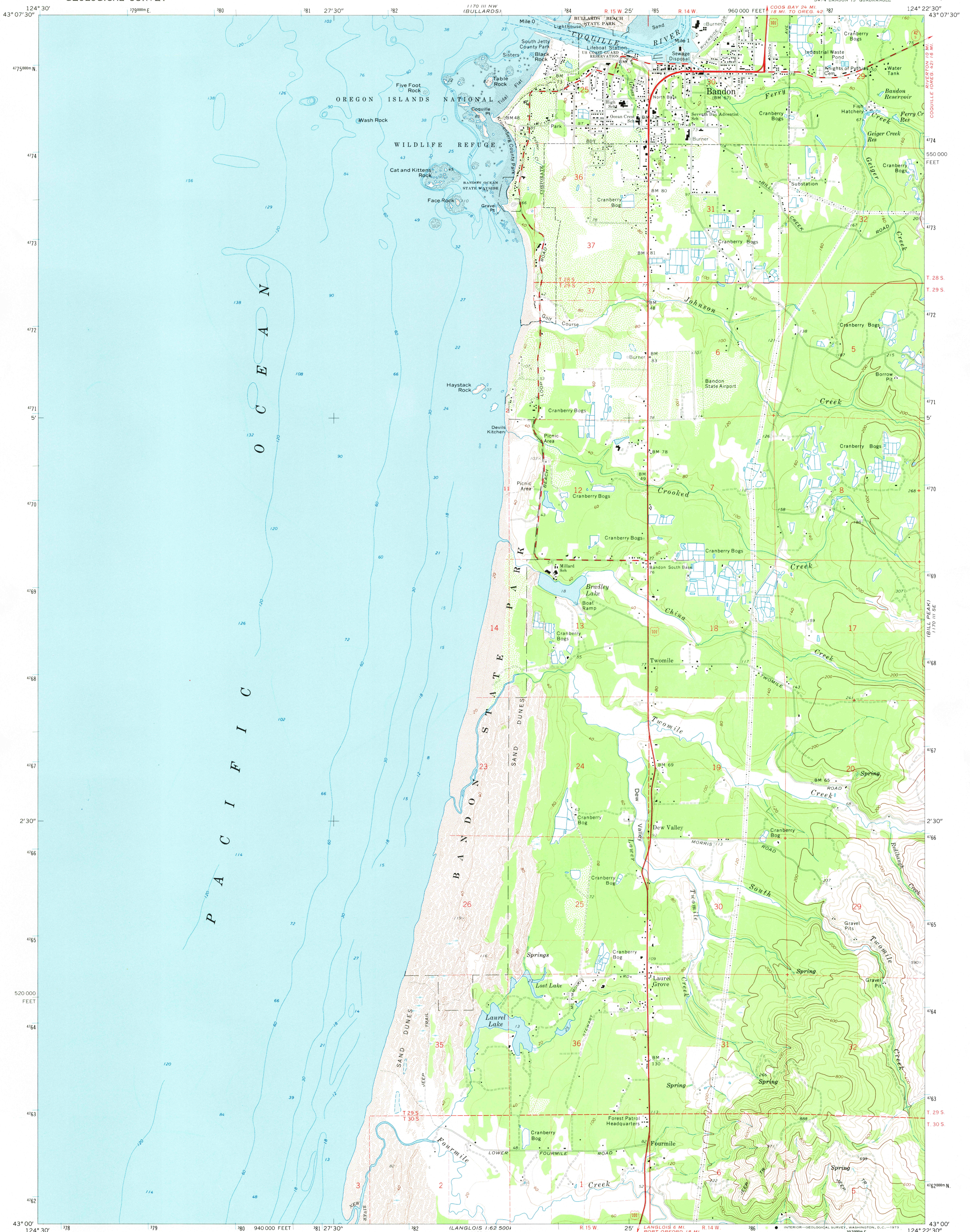
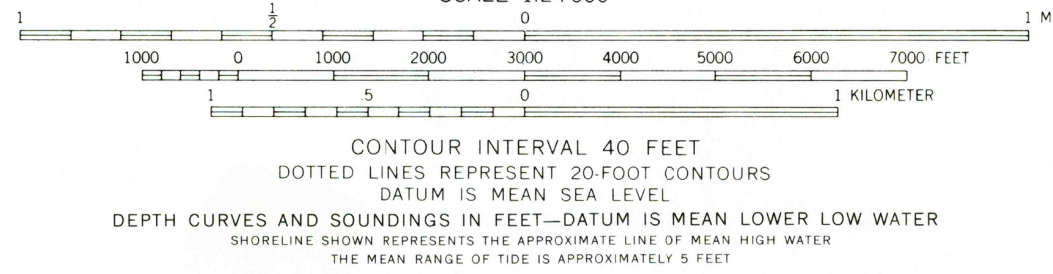
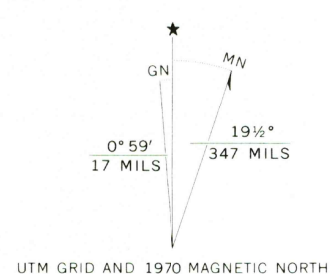


UNITED STATES
DEPARTMENT OF THE INTERIOR
GEOLOGICAL SURVEY

BANDON QUADRANGLE
OREGON—COOS CO.
7.5 MINUTE SERIES (TOPOGRAPHIC)
SW 1/4 BANDON 15' QUADRANGLE



Mapped, edited, and published by the Geological Survey
Control by USGS, USC&GS, and State of Oregon
Topography by photogrammetric methods from aerial
photographs taken 1969-70. Field checked 1970
Selected hydrographic data compiled from USC&GS Chart 5971 (1967)
and hydrographic surveys 1925 and 1928
This information is not intended for navigational purposes
Projection and 10,000-foot grid ticks: Oregon coordinate
system, south zone (Lambert conformal conic)
1000-meter Universal Transverse Mercator grid ticks,
zone 10, shown in blue. 1927 North American datum
Fine red dashed lines indicate selected fence lines



ROAD CLASSIFICATION
Primary highway, hard surface
Secondary highway, hard surface
Unimproved road
Light-duty road, hard or improved surface
Interstate Route
U. S. Route
State Route

USGS
Historical File
Topographic Division

BANDON, OREG.
SW 1/4 BANDON 15' QUADRANGLE
N4300—W12422.5/7.5

1970

AMS 1170 III SW—SERIES V892

FOR SALE BY U. S. GEOLOGICAL SURVEY, DENVER, COLORADO 80225, OR WASHINGTON, D. C. 20242
A FOLDER DESCRIBING TOPOGRAPHIC MAPS AND SYMBOLS IS AVAILABLE ON REQUEST

JAN 7 1974