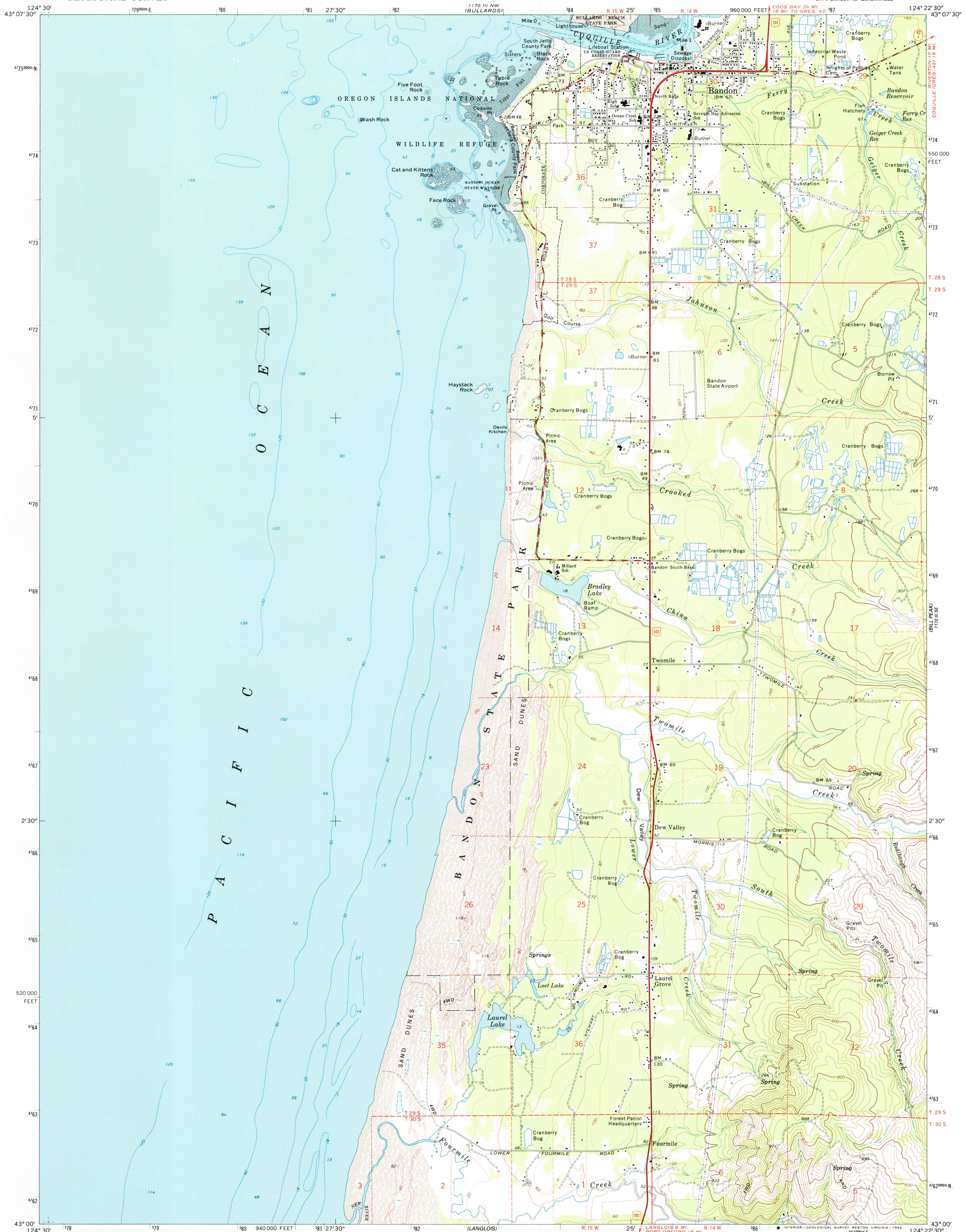
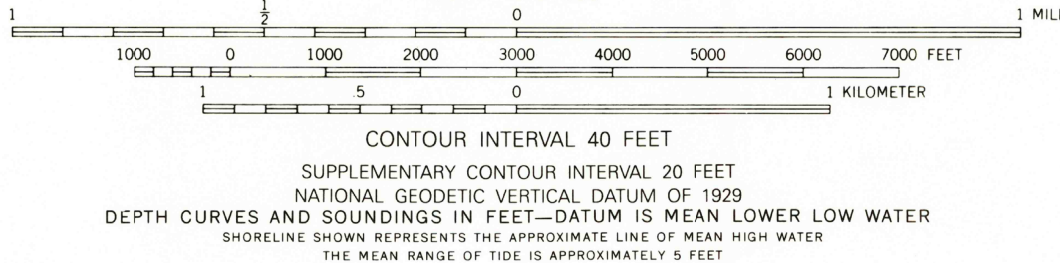
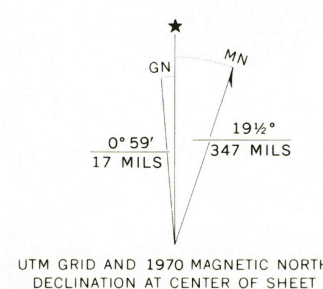


UNITED STATES  
DEPARTMENT OF THE INTERIOR  
GEOLOGICAL SURVEY

BANDON QUADRANGLE  
OREGON—COOS CO.  
7.5 MINUTE SERIES (TOPOGRAPHIC)



Produced by the United States Geological Survey  
Control by USGS and NOS/NOAA, and State of Oregon  
Compiled from aerial photographs taken 1969-70  
Field checked 1970  
Selected hydrographic data compiled from NOS/NOAA Chart 18588  
(1974) and hydrographic surveys 1925 and 1928  
This information is not intended for navigational purposes  
North American Datum of 1927 (NAD 27). Projection and  
1000-foot grid ticks. Oregon Coordinate System, south zone  
(Lambert Conformal Conic). 1000-meter Universal Transverse  
Mercator grid ticks, zone 10, shown in blue  
The difference between NAD 27 and North American Datum of  
1983 (NAD 83) for 7.5 minute intersections is given in USGS  
Bulletin 1875. The NAD 83 is shown by dashed corner ticks  
There may be private inholdings within the boundaries of the  
National or State reservations shown on this map  
Fine red dashed lines indicate selected fence and field lines where  
generally visible on aerial photographs



ROAD CLASSIFICATION  
Primary highway, hard surface  
Secondary highway, hard surface  
Unimproved road  
Interstate Route  
U. S. Route  
State Route  
Light-duty road, hard or improved surface  
Unimproved road

BANDON, OREG.  
SW 1/4 BANDON 15' QUADRANGLE  
43124-A4-TF-024

1970

DMA 1170 III SW-SERIES V892

