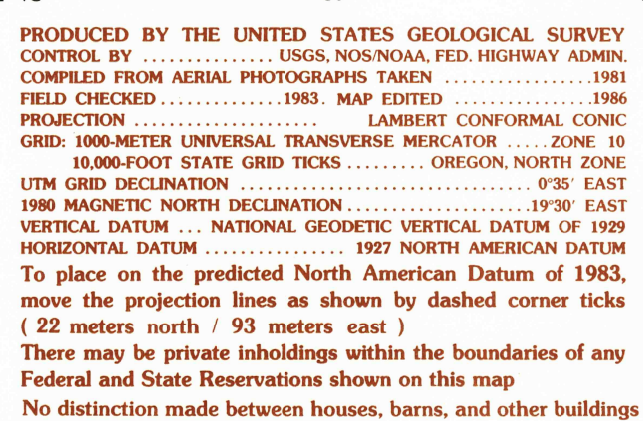


BEDFORD POINT QUADRANGLE  
OREGON-CLACKAMAS CO.  
7.5 MINUTE SERIES (TOPOGRAPHIC)



**SCALE 1:24 000**

The graphic scale bar consists of four horizontal lines with tick marks and labels. The top line is labeled 'KILOMETERS' with '0' at the left and '1' at the right. The second line is labeled 'METERS' with '0' at the left and '1000' at the right. The third line is labeled 'MILES' with '0' at the left and '1' at the right. The bottom line is labeled 'FEET' with '2000', '3000', '4000', '5000', '6000', and '7000' marked along the line. The entire scale is enclosed in a rectangular border.

**INTERIOR**

**CONTOUR INTERVAL 40 FEET**

**CONTROL ELEVATIONS SHOWN TO THE NEAREST 0.1 FOOT  
OTHER ELEVATIONS SHOWN TO THE NEAREST FOOT**

To convert meters to feet multiply by 3.2808  
To convert feet to meters divide by 0.3048

1	2	3	1 Estacada
4		5	2 Cherryville
6	7	8	3 Wildcat Mtn.
			4 Elwood
			5 Three Lynx
			6 Soosap Peak
			7 Wanderers Peak
			8 Fish Creek Mtn.

USGS NMD HISTORICAL MAP  
JUN 25 1986  
REC'D FILE COPY