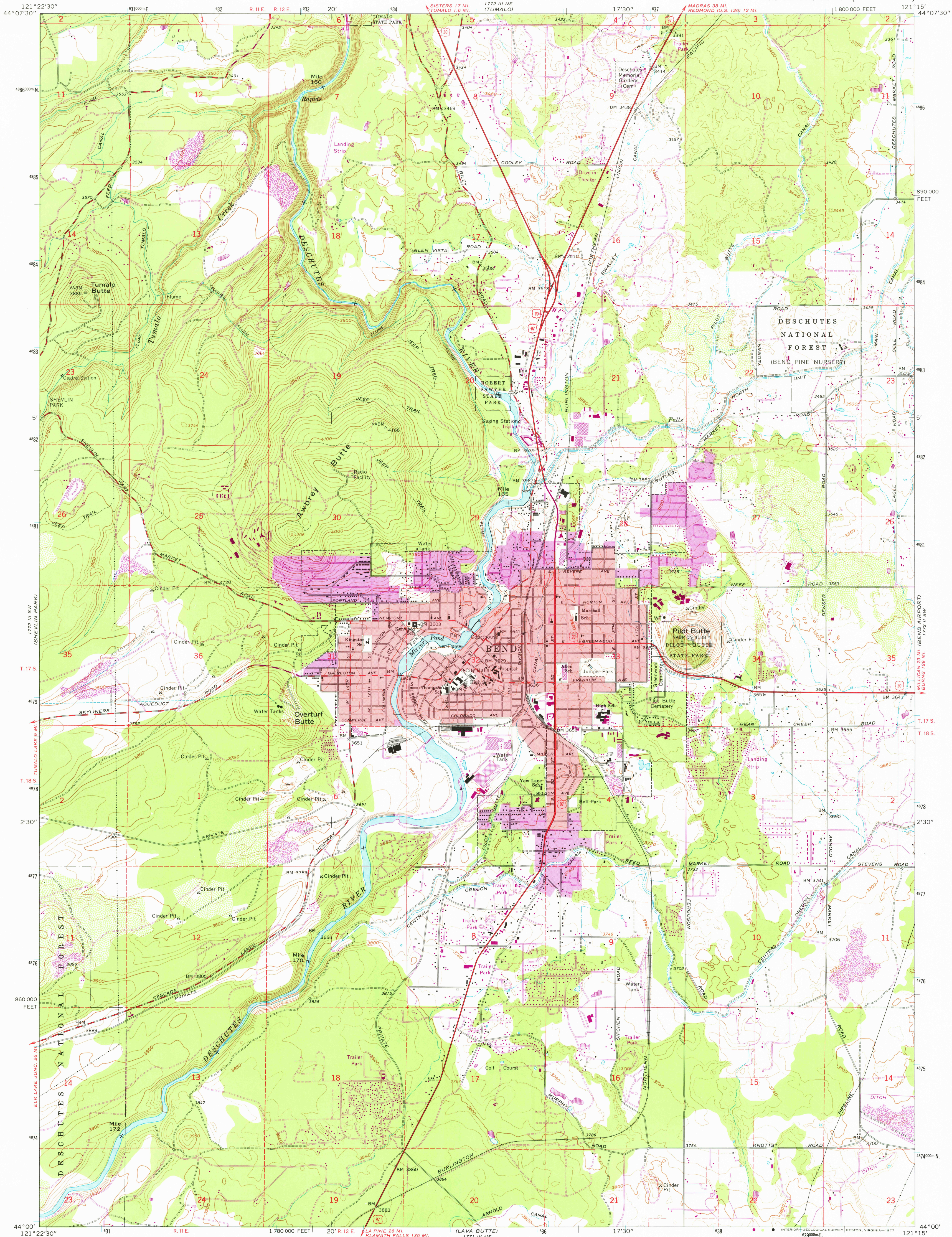


UNITED STATES  
DEPARTMENT OF THE INTERIOR  
GEOLOGICAL SURVEY

BEND QUADRANGLE  
OREGON-DESCHUTES CO.  
7.5 MINUTE SERIES (TOPOGRAPHIC)



Mapped, edited, and published by the Geological Survey

Control by USGS and USC&GS

Topography by photogrammetric methods from aerial photographs taken 1957 and 1959. Field checked 1962

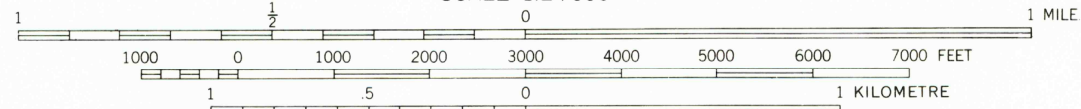
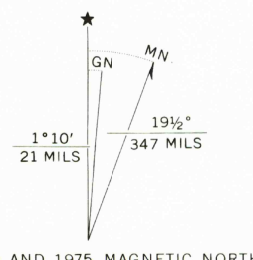
Polyconic projection. 1927 North American datum 10,000-foot grid based on Oregon coordinate system, south zone 1000-metre Universal Transverse Mercator grid ticks, zone 10, shown in blue

Red tint indicates areas in which only landmark buildings are shown

Fine red dashed lines indicate selected fence lines

Revisions shown in purple compiled from aerial photographs taken 1975. This information not field checked

Purple tint indicates extension of urban areas



CONTOUR INTERVAL 20 FEET  
DOTTED LINES REPRESENT 10-FOOT CONTOURS  
NATIONAL GEODETIC VERTICAL DATUM OF 1929



ROAD CLASSIFICATION  
Heavy-duty ——— Light-duty ———  
Medium-duty ——— Unimproved dirt ———  
U. S. Route ———

BEND, OREG.  
N4400—W12115/7.5

USGS  
Historical File  
Topographic Division

1962  
PHOTOREVISED 1975  
AMS 1772 III SE—SERIES Y892

AUG 22 1977