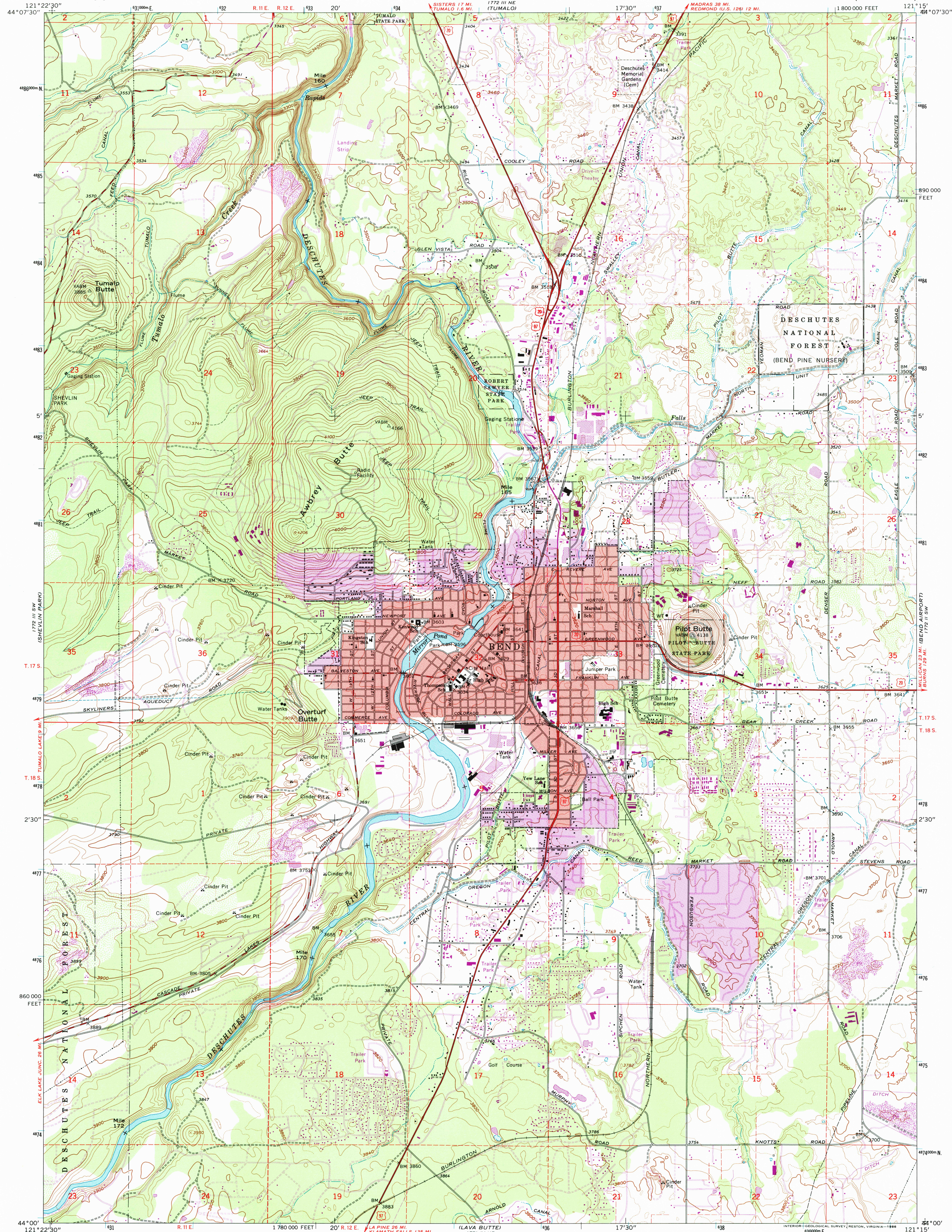
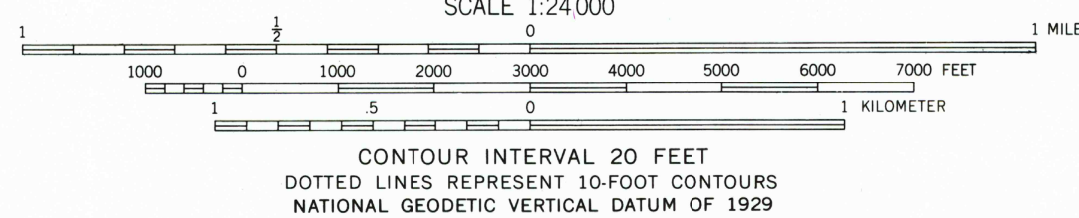
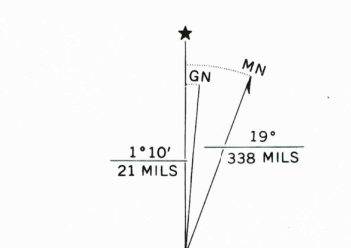


1772 II NW
(FORKED HORN BUTTE)



Mapped, edited, and published by the Geological Survey
Control by USGS and NOS/NOAA
Topography by photogrammetric methods from aerial
photographs taken 1957 and 1959. Field checked 1962
Polyconic projection. 1927 North American datum
10,000-foot grid based on Oregon coordinate system, south zone
1000-meter Universal Transverse Mercator grid ticks,
zone 10, shown in blue
To place on the predicted North American Datum 1983,
move the projection lines 21 meters north and
92 meters east as shown by dashed corner ticks
Red tint indicates areas in which only landmark buildings are shown
Fine red dashed lines indicate selected fence lines
There may be private inholdings within the boundaries of
the National or State reservations shown on this map



THIS MAP COMPLIES WITH NATIONAL MAP ACCURACY STANDARDS
FOR SALE BY U.S. GEOLOGICAL SURVEY, P.O. BOX 25286, DENVER, COLORADO 80225
A FOLDER DESCRIBING TOPOGRAPHIC MAPS AND SYMBOLS IS AVAILABLE ON REQUEST



ROAD CLASSIFICATION
Heavy-duty ——— Light-duty ———
Medium-duty ——— Unimproved dirt ———
U.S. Route

BEND, OREG.
44121-A3-TF-024

1962
PHOTOREVISED 1981
DMA 1772 III SE-SERIES V892

Revisions shown in purple compiled from aerial photographs
taken 1979 and other source data. This information not
field checked. Map edited 1981
Purple tint indicates extension of urban areas

RECEIVED

AUG 31 2000

U.S. GEOLOGICAL SURVEY
HISTORICAL MAP ARCHIVES

ISBN 0-607-44087-2

9 780607 440872