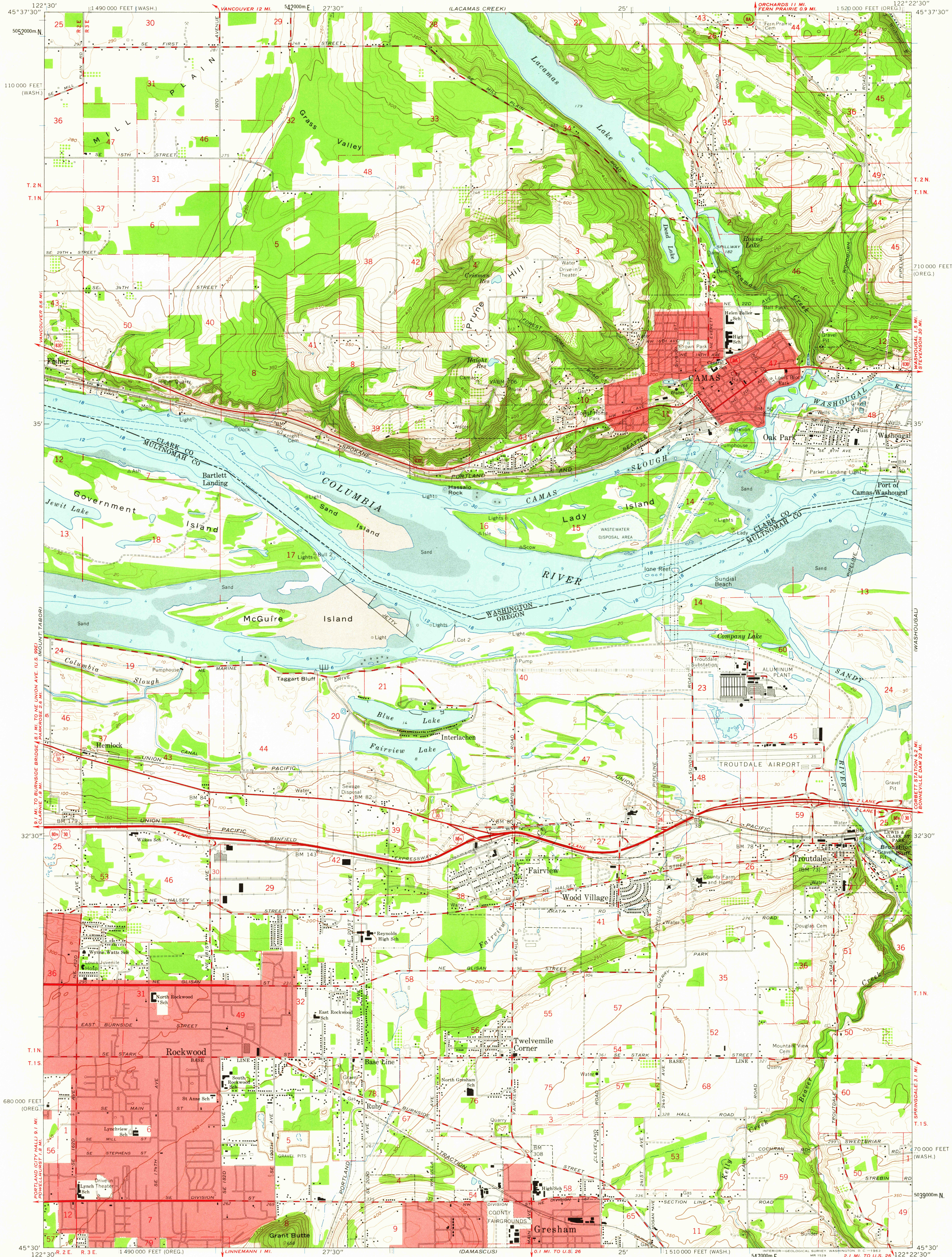
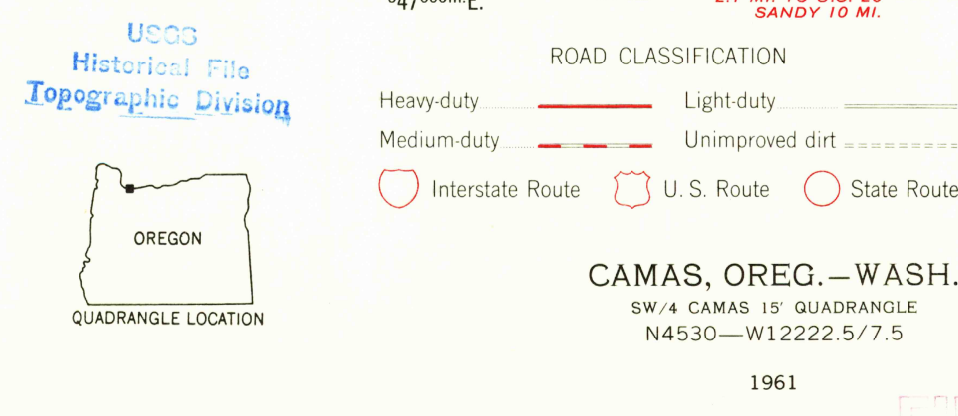
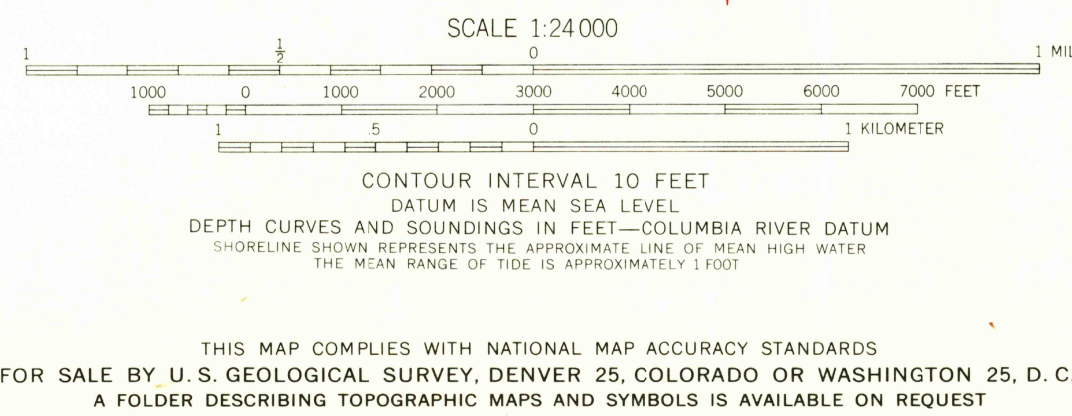


UNITED STATES
DEPARTMENT OF THE INTERIOR
GEOLOGICAL SURVEY

CAMAS QUADRANGLE
OREGON-WASHINGTON
7.5 MINUTE SERIES (TOPOGRAPHIC)



Mapped, edited, and published by the Geological Survey
Control by USGS, USC&GS, and State of Oregon
Topography from aerial photographs by photogrammetric methods
and by planetable surveys 1954. Culture and drainage in part
by USC&GS. Aerial photographs taken 1951
Revised from aerial photographs taken 1960. Field check 1961
Selected hydrographic data compiled from USC&GS Chart 6156 (1959)
This information is not intended for navigational purposes
Polyconic projection. 1927 North American datum
10,000-foot grids based on Oregon coordinate system, north zone
and Washington coordinate system, south zone
1000-meter Universal Transverse Mercator grid ticks,
zone 10, shown in blue
Red tint indicates areas in which only landmark buildings are shown
Dashed land lines indicate approximate locations
Fine red dashed lines indicate selected fence lines



APR - 4 1962
3575