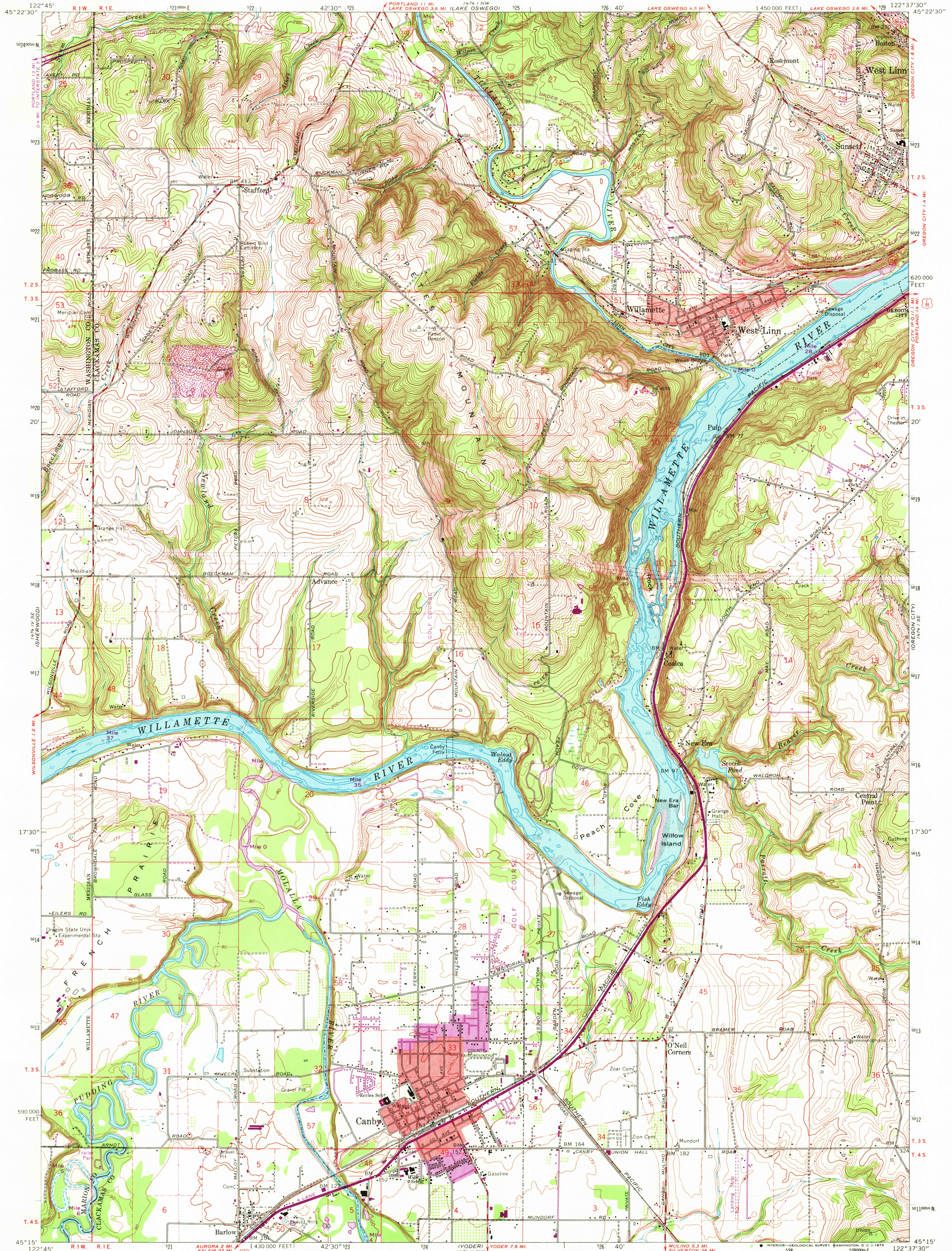


UNITED STATES  
DEPARTMENT OF THE INTERIOR  
GEOLOGICAL SURVEY

CANBY QUADRANGLE  
OREGON  
7.5 MINUTE SERIES (TOPOGRAPHIC)  
SW/4 OREGON CITY 15' QUADRANGLE



Mapped, edited, and published by the Geological Survey

Control by USGS, USC&GS, USCE, and State of Oregon

Topography from aerial photographs by photogrammetric methods

Aerial photographs taken 1952. Field check 1954

Revised from aerial photographs taken 1960. Field check 1961

Selected hydrographic data compiled from USC&GS Charts

6171 (1958) and 6172 (1958)

This information is not intended for navigational purposes

Polyconic projection. 1927 North American datum

10,000-foot grid based on Oregon coordinate system, north zone

1000-meter Universal Transverse Mercator grid ticks,

zone 10, shown in blue

Red tint indicates areas in which only landmark buildings are shown

Fine red dashed lines indicate selected fence lines

SCALE 1:24,000

CONTOUR INTERVAL 10 FEET

DATUM IS MEAN SEA LEVEL

DEPTH CURVES AND SOUNDINGS IN FEET—WILLAMETTE RIVER DATUM

THIS MAP COMPLIES WITH NATIONAL MAP ACCURACY STANDARDS  
FOR SALE BY U.S. GEOLOGICAL SURVEY, DENVER, COLORADO 80225, OR WASHINGTON, D.C. 20242  
A FOLDER DESCRIBING TOPOGRAPHIC MAPS AND SYMBOLS IS AVAILABLE ON REQUEST

ROAD CLASSIFICATION

Heavy-duty Light-duty

Medium-duty Unimproved dirt

Interstate Route U.S. Route State Route

CANBY, OREG.

SW/4 OREGON CITY 15' QUADRANGLE

N4515—W12237.5/7.5

1961

PHOTOREVISED 1970

AMS 1474 1 SW—SERIES V892

USGS  
HISTORICAL FILE  
TOPOGRAPHIC DIVISION

3320

W. J. Plani

JAN 25 1972