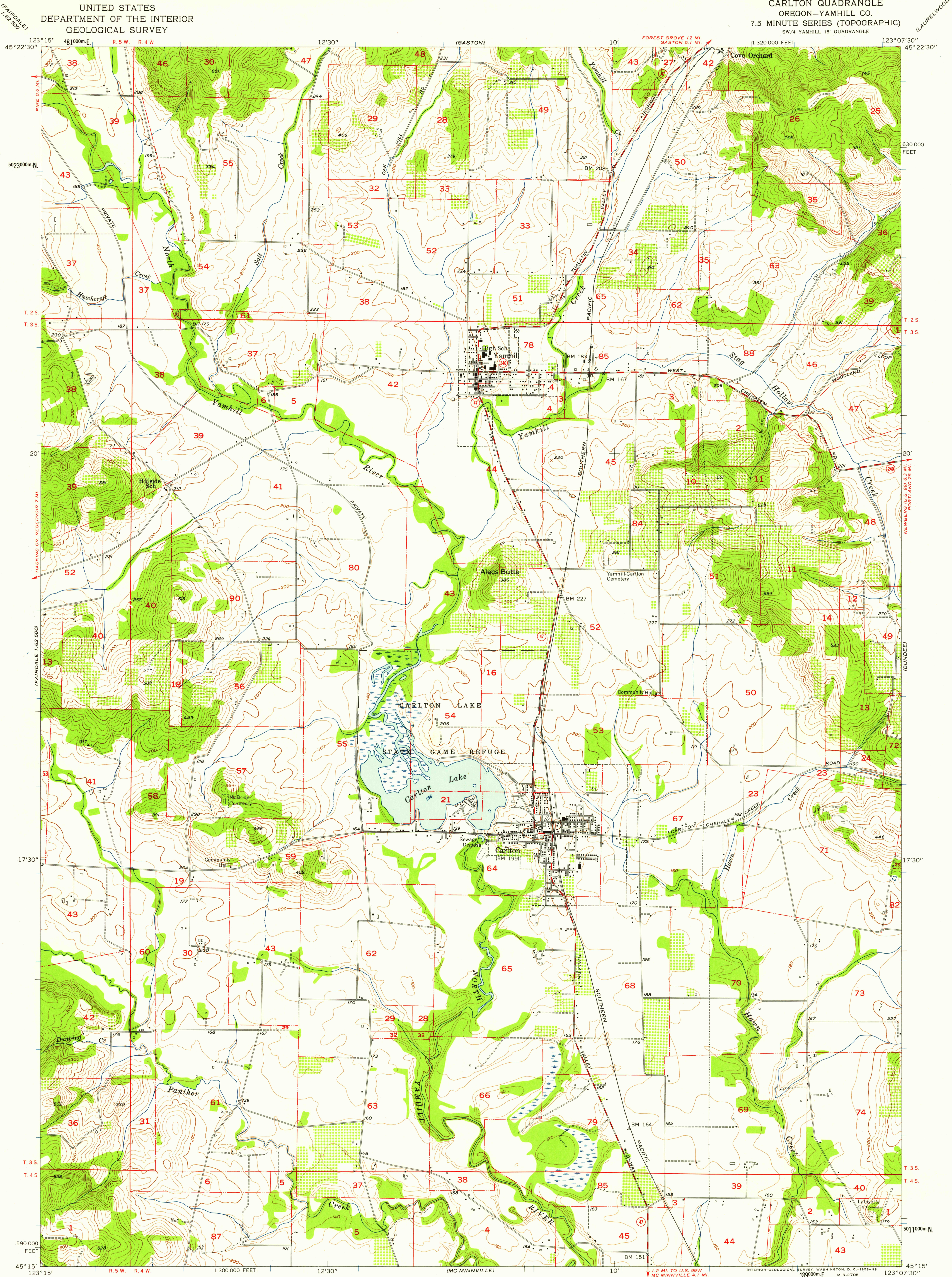
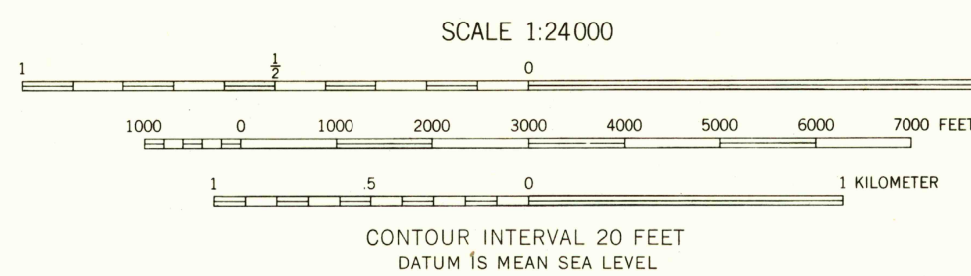
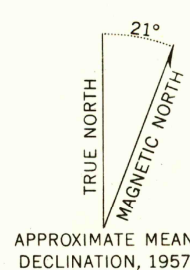


UNITED STATES  
DEPARTMENT OF THE INTERIOR  
GEOLOGICAL SURVEY

CARLTON QUADRANGLE  
OREGON-YAMHILL CO.  
7.5 MINUTE SERIES (TOPOGRAPHIC)  
SW 1/4 YAMHILL 15' QUADRANGLE



Mapped, edited, and published by the Geological Survey  
Control by USGS, USC&GS, USCE, and State of Oregon  
Topography from aerial photographs by photogrammetric methods  
Aerial photographs taken 1954. Field check 1956-57  
Polyconic projection. 1927 North American datum  
10,000-foot grid based on Oregon coordinate system,  
north zone  
1000-meter Universal Transverse Mercator grid ticks,  
zone 10, shown in blue



USGS  
Historical File  
Topographic Division



ROAD CLASSIFICATION  
Medium-duty — Light-duty  
Unimproved dirt —  
State Route

CARLTON, OREG.  
SW 1/4 YAMHILL 15' QUADRANGLE  
N4515-W12307.5/7.5

1957

THIS MAP COMPLIES WITH NATIONAL MAP ACCURACY STANDARDS  
FOR SALE BY U. S. GEOLOGICAL SURVEY, DENVER 2, COLORADO OR WASHINGTON 25, D. C.  
A FOLDER DESCRIBING TOPOGRAPHIC MAPS AND SYMBOLS IS AVAILABLE ON REQUEST

JUN 10 1956

2345