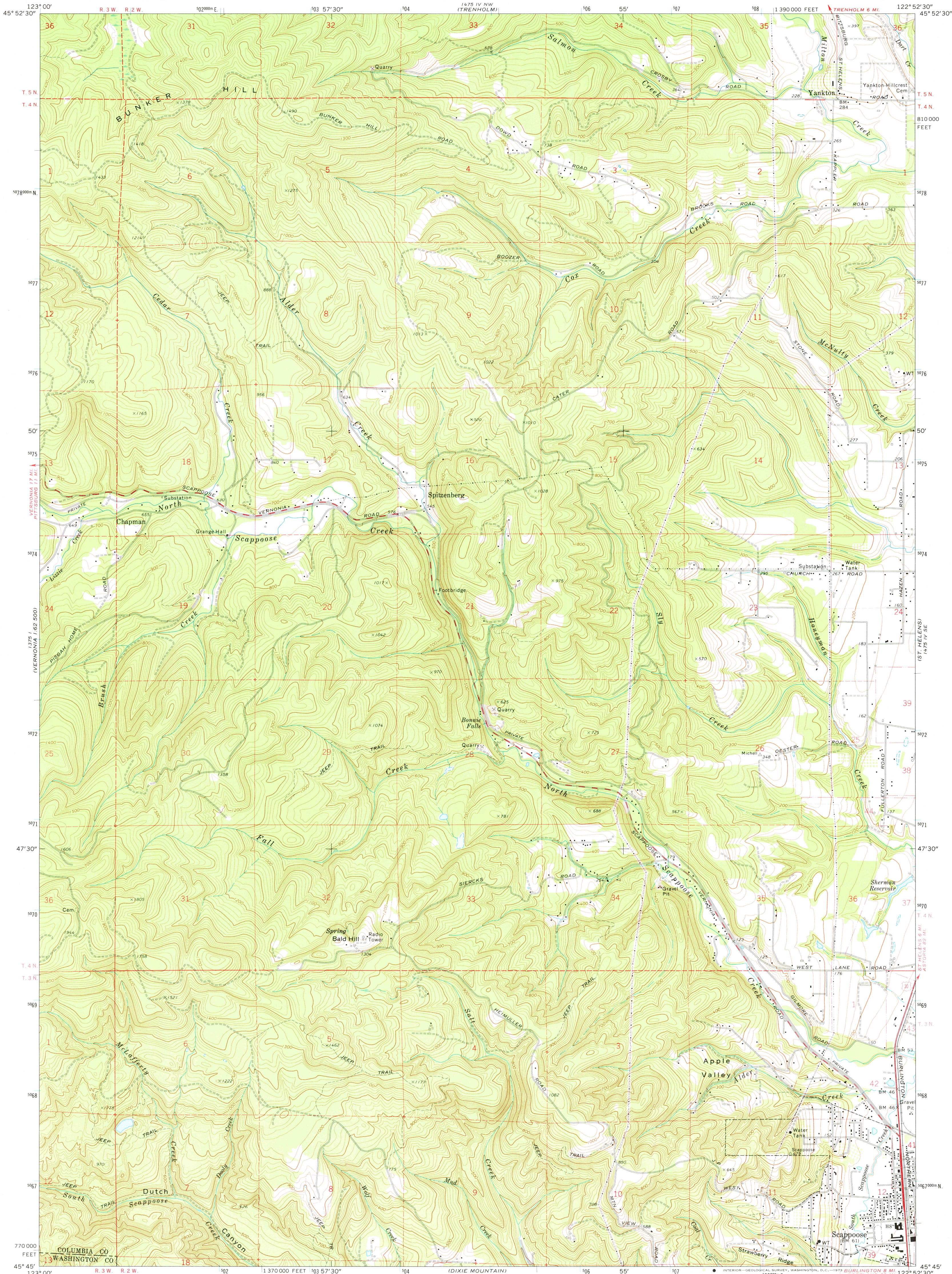


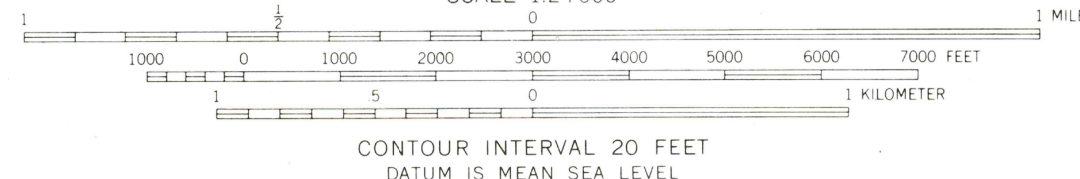
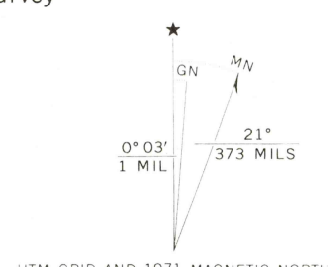
UNITED STATES  
DEPARTMENT OF THE INTERIOR  
GEOLOGICAL SURVEY

CHAPMAN QUADRANGLE  
OREGON—COLUMBIA CO.  
7.5 MINUTE SERIES (TOPOGRAPHIC)



Mapped, edited, and published by the Geological Survey

Control by USGS, USC&GS, and State of Oregon  
Topography by photogrammetric methods from aerial  
photographs taken 1953 and 1970. Field checked 1971  
Projection and 10,000-foot grid ticks: Oregon coordinate  
system, north zone (Lambert conformal conic)  
1000-meter Universal Transverse Mercator grid ticks,  
zone 10, shown in blue. 1927 North American datum  
Fine red dashed lines indicate selected fence lines



ROAD CLASSIFICATION	
Primary highway, hard surface	Light-duty road, hard or improved surface
Secondary highway, hard surface	Unimproved road
Interstate Route	U. S. Route
	State Route

USGS  
Historical File  
Topographic Division

CHAPMAN, OREG.  
SW 1/4 ST. HELENS 15' QUADRANGLE  
N4545—W12252.5/7.5

1971

AMS 1475 IV SW—SERIES V892

FOR SALE BY U. S. GEOLOGICAL SURVEY, DENVER, COLORADO 80225, OR WASHINGTON, D. C. 20242  
A FOLDER DESCRIBING TOPOGRAPHIC MAPS AND SYMBOLS IS AVAILABLE ON REQUEST

NOV 2 1 1973

3255