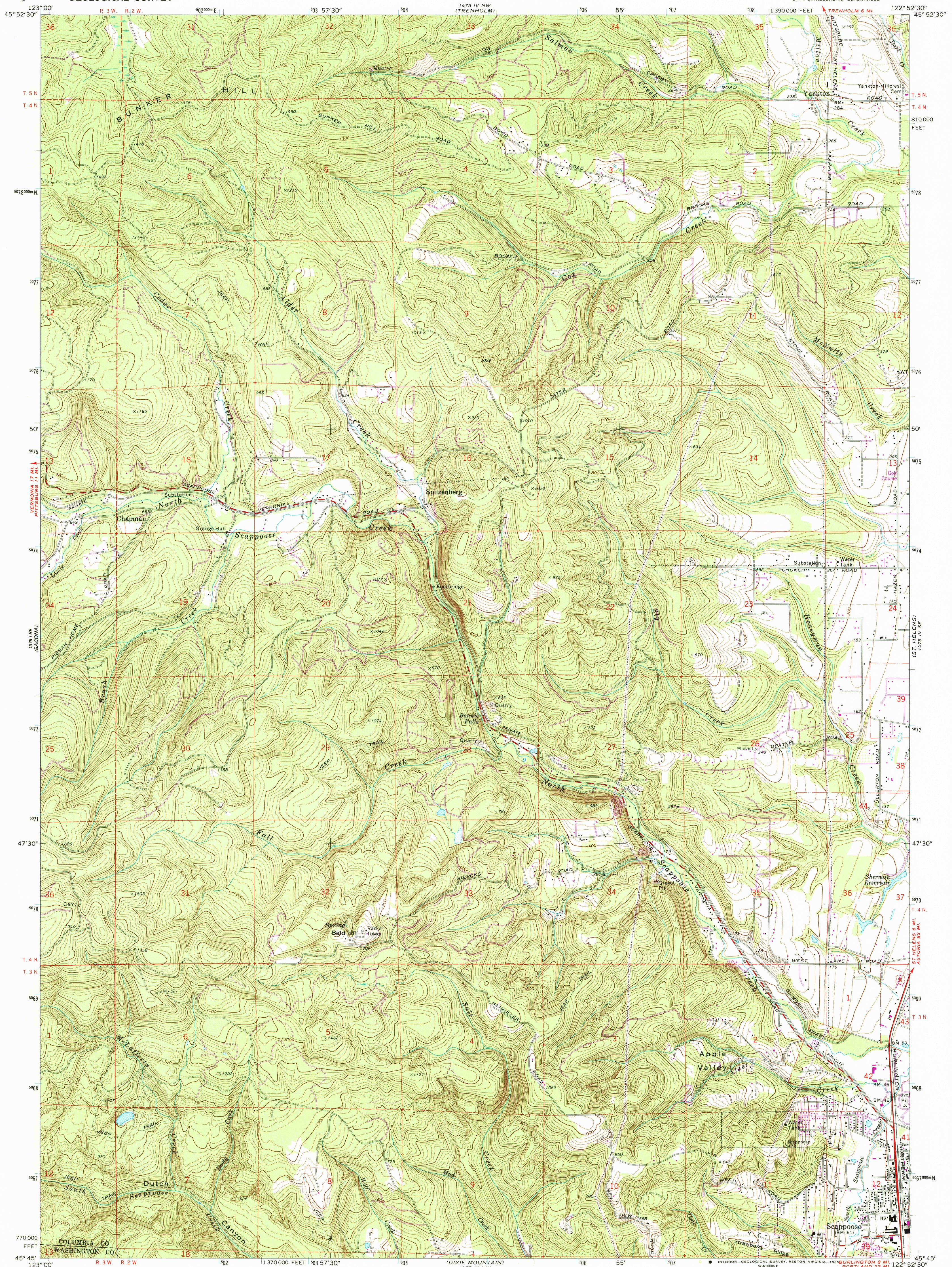


UNITED STATES
DEPARTMENT OF THE INTERIOR
GEOLOGICAL SURVEY

CHAPMAN QUADRANGLE
OREGON—COLUMBIA CO.
7.5 MINUTE SERIES (TOPOGRAPHIC)
SW 1/4 ST. HELENS 15' QUADRANGLE



Maped, edited, and published by the Geological Survey

Control by USGS, USC&GS, and State of Oregon

Topography by photogrammetric methods from aerial photographs taken 1953 and 1970. Field checked 1971

Projection and 10,000-foot grid ticks: Oregon coordinate system, north zone (Lambert conformal conic)

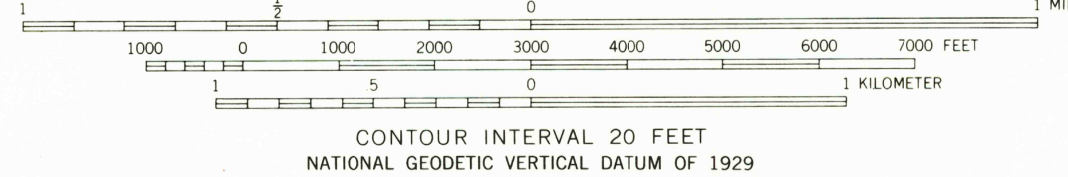
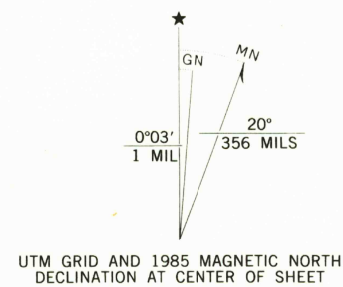
1000-meter Universal Transverse Mercator grid ticks, zone 10, shown in blue. 1927 North American datum

To place on the predicted North American Datum 1983, move the projection lines 23 meters north and 95 meters east as shown by dashed corner ticks

Fine red dashed lines indicate selected fence lines

Revisions shown in purple compiled from aerial photographs taken 1981 and other sources

This information not field checked. Map edited 1985



FOR SALE BY U. S. GEOLOGICAL SURVEY, DENVER, COLORADO 80225
OR RESTON, VIRGINIA 22092
A FOLDER DESCRIBING TOPOGRAPHIC MAPS AND SYMBOLS IS AVAILABLE ON REQUEST



ROAD CLASSIFICATION
Primary highway, hard surface
Secondary highway, hard surface
Light duty road, hard or improved surface
Unimproved road
Interstate Route
U. S. Route
State Route

CHAPMAN, OREG.
SW 1/4 ST. HELENS 15' QUADRANGLE
45122-G8-TF-024

1971
PHOTOREVISED 1985
DMA 1475 IV SW—SERIES V892

USGS NMD HISTORICAL MAP
MAR 14 1986
REC'D FILE COPY