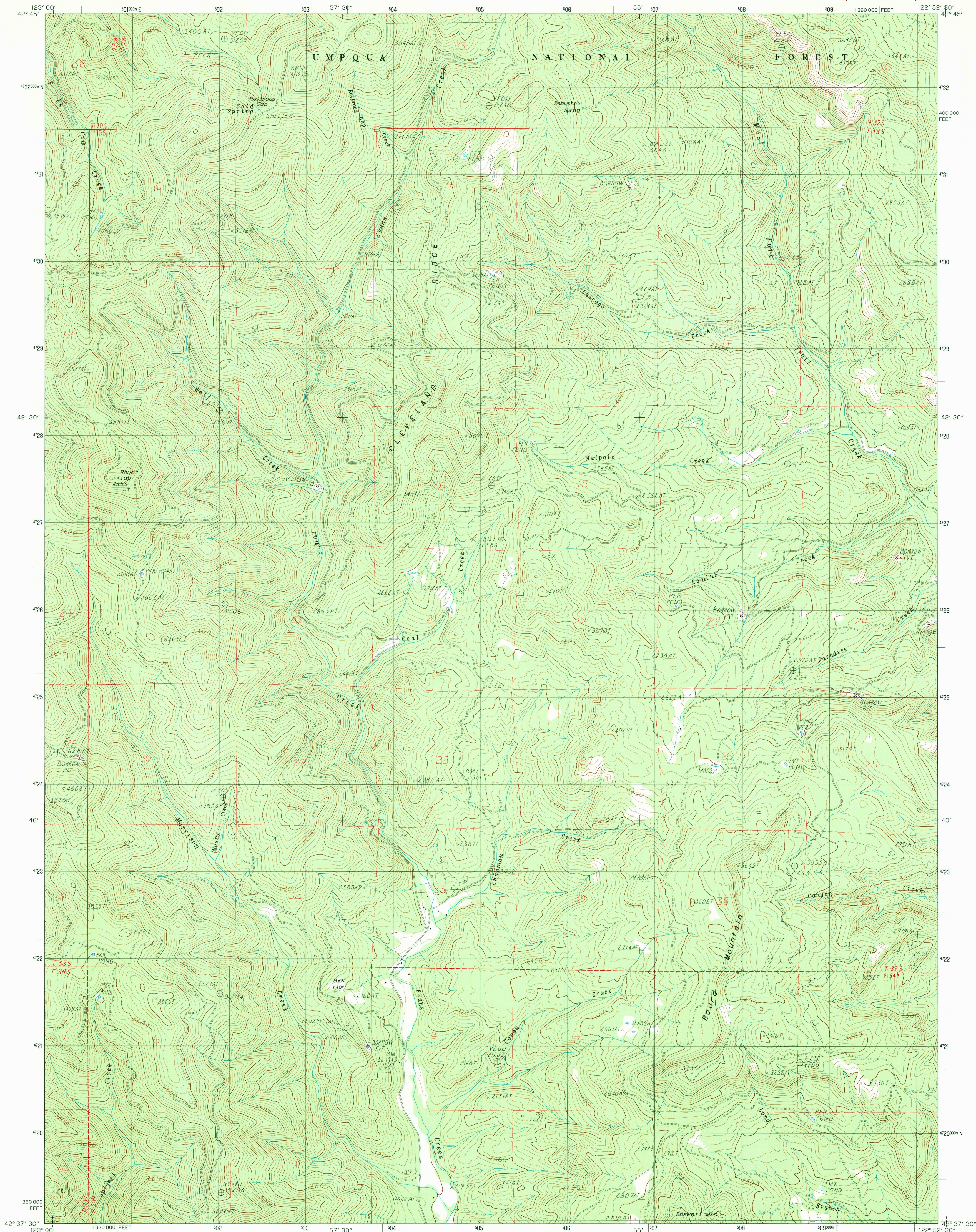


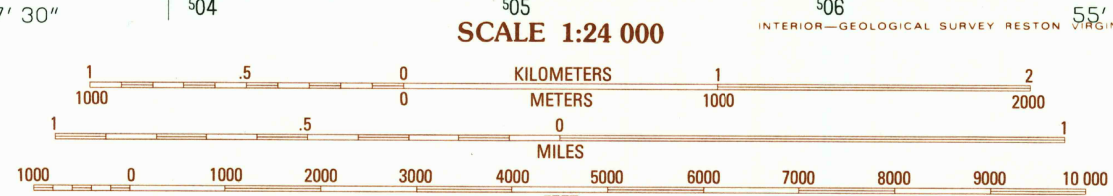
UNITED STATES
DEPARTMENT OF THE INTERIOR
GEOLOGICAL SURVEY

CLEVELAND RIDGE QUADRANGLE
OREGON—JACKSON CO.
7.5 MINUTE SERIES (TOPOGRAPHIC)



PRODUCED BY THE UNITED STATES GEOLOGICAL SURVEY
CONTROL BY: USGS, NOS/NOAA
COMPILED FROM AERIAL PHOTOGRAPHS TAKEN: 1976
FIELD CHECKED: 1977. MAP EDITED: 1983
PROJECTION: LAMBERT CONFORMAL CONIC
GRID: 1000-METER UNIVERSAL TRANSVERSE MERCATOR - ZONE 10
10,000-FOOT STATE GRID Ticks
UTM GRID DECLINATION: 0903 EAST
1980 MAGNETIC NORTH DECLINATION: 18°30' EAST
VERTICAL DATUM: NATIONAL GEODETIC VERTICAL DATUM OF 1929
HORIZONTAL DATUM: 1927 NORTH AMERICAN DATUM
To place on the predicted North American Datum of 1983,
move the projection lines as shown by dashed corner ticks
(21 meters north / 95 meters east)
There may be private inholdings within the boundaries of any
Federal and State Reservations shown on this map

PROVISIONAL MAP
Produced from original
manuscript drawings. Infor-
mation shown as of date of
field check.



1	2	3	1	Cedar Springs Mtn.
2	3	4	2	Richter Mtn.
3	4	5	3	Ragsdale Butte
4	5	6	4	Skeleton Mtn.
5	6	7	5	Trail
6	7	8	6	McConville Peak
7	8	9	7	Boswell Mtn.
8	9	10	8	Shady Cove

ROAD LEGEND
Improved Road
Unimproved Road
Trail
Interstate Route
U.S. Route
State Route

CLEVELAND RIDGE, OREG.
PROVISIONAL EDITION 1983

THIS MAP COMPLIES WITH NATIONAL MAP ACCURACY STANDARDS
FOR SALE BY U. S. GEOLOGICAL SURVEY, DENVER, COLORADO 80225, OR RESTON, VIRGINIA 22092

42122-F8-TF-024

RETURN TO:
USGS AND HISTORICAL MAP ARCHIVES

JUL 15 1983