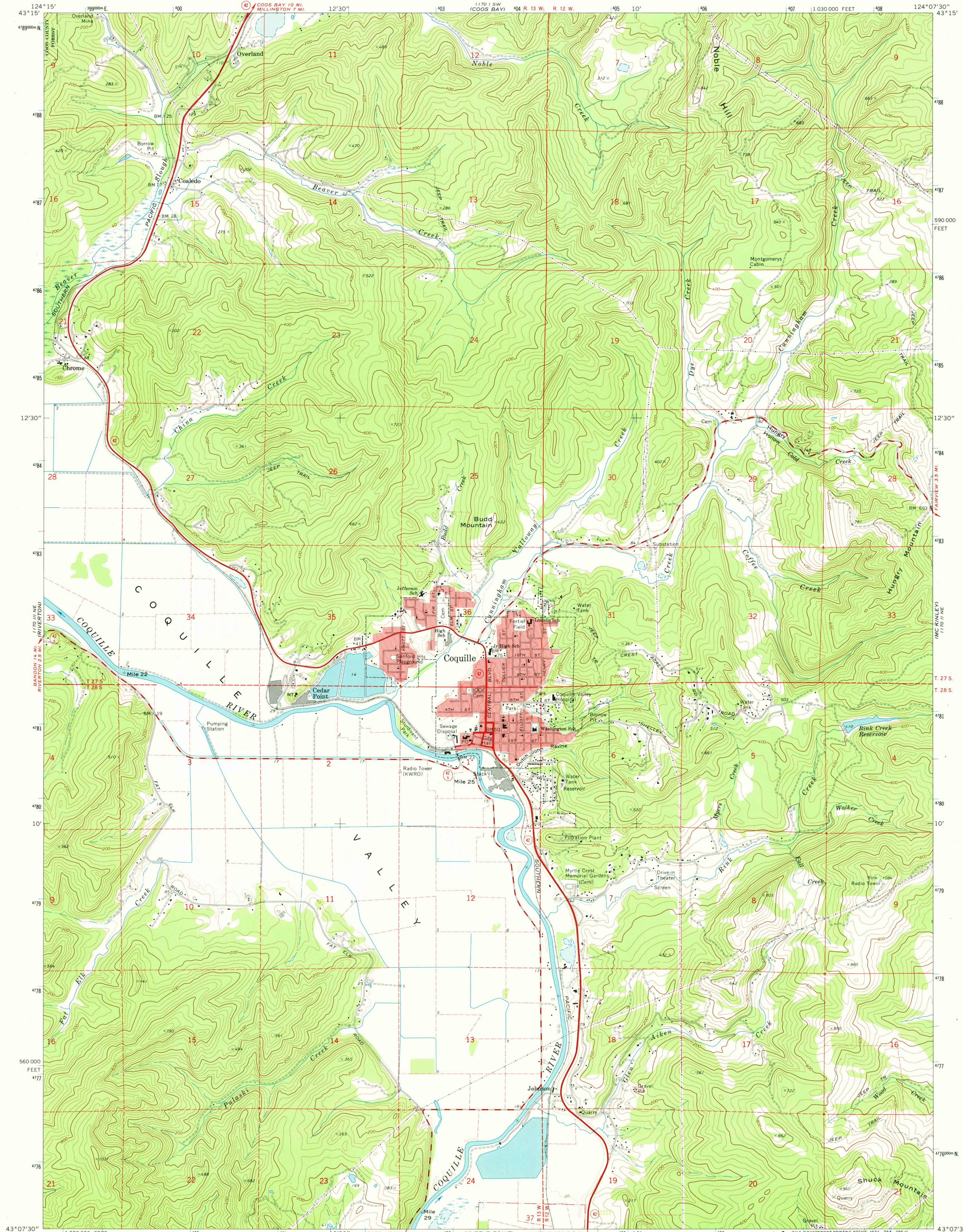


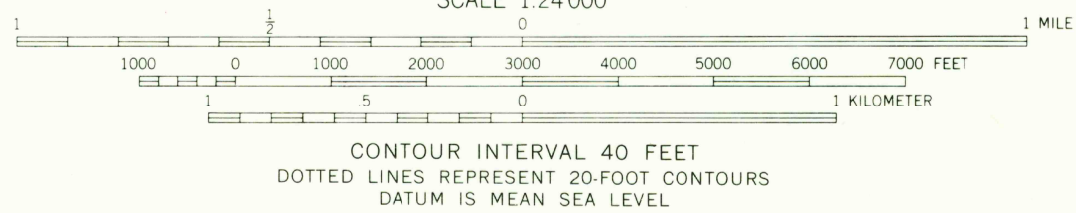
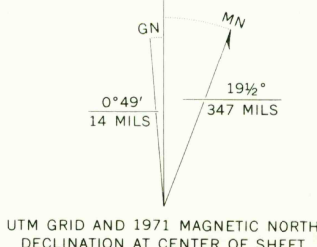
UNITED STATES
DEPARTMENT OF THE INTERIOR
GEOLOGICAL SURVEY

COQUILLE QUADRANGLE
OREGON—COOS CO.
7.5 MINUTE SERIES (TOPOGRAPHIC)
NW 1/4 COQUILLE 15' QUADRANGLE

170 SE
DANIELS CREEK



Mapped, edited, and published by the Geological Survey
Control by USGS and USC&GS
Topography by photogrammetric methods from aerial
photographs taken 1969-70. Field checked 1971
Projection and 10,000-foot grid ticks: Oregon coordinate
system, south zone (Lambert conformal conic)
1000-meter Universal Transverse Mercator grid ticks,
zone 10, shown in blue. 1927 North American datum
Red tint indicates areas in which only landmark buildings
are shown
Fine red dashed lines indicate selected fence lines



ROAD CLASSIFICATION
Primary highway, hard surface
Secondary highway, hard surface
Unimproved road
Interstate Route
U.S. Route
State Route

USGS
HISTORICAL FILE
TOPOGRAPHIC DIVISION

COQUILLE, OREG.
NW 1/4 COQUILLE 15' QUADRANGLE
N4307.5—W12407.5/7.5
1971

AMS 1170 II NW—SERIES V892

DEC 10 1973

Dangerous
2500
50 ft