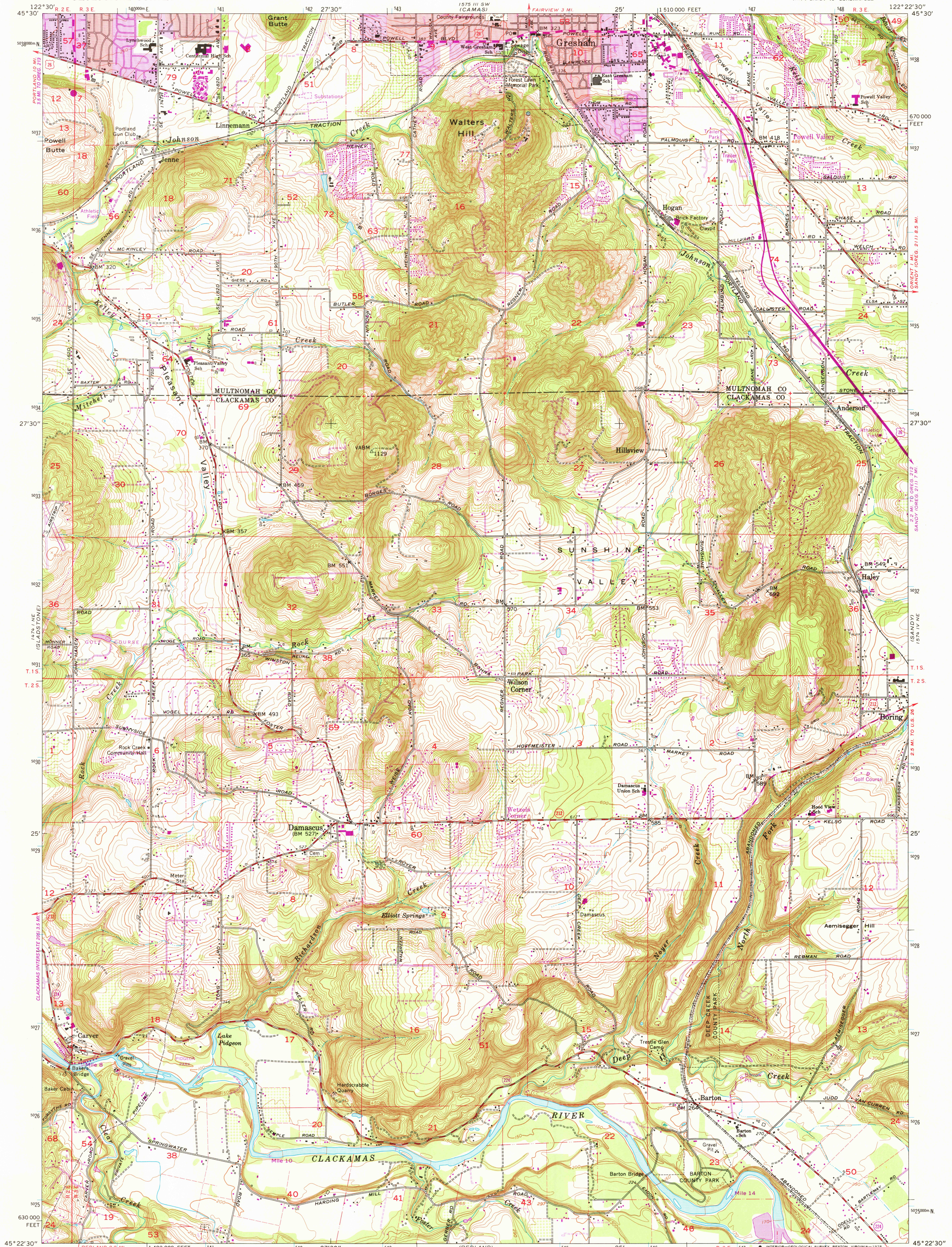


UNITED STATES
DEPARTMENT OF THE INTERIOR
GEOLOGICAL SURVEY

DAMASCUS QUADRANGLE
OREGON
7.5 MINUTE SERIES (TOPOGRAPHIC)
NW/4 SANDY 15' QUADRANGLE



Mapped, edited, and published by the Geological Survey
Control by USGS and NOS/NOAA, and State of Oregon

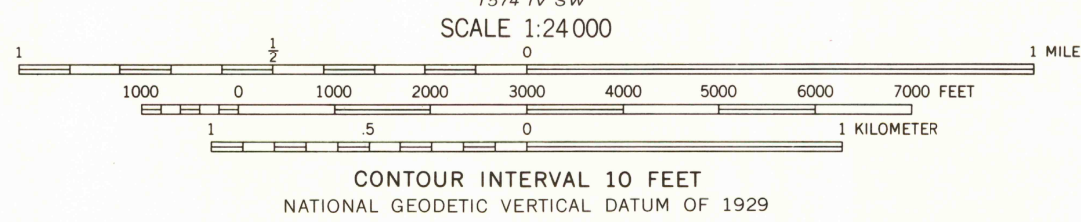
Topography from aerial photographs by photogrammetric methods
Aerial photographs taken 1952. Field check 1954
Revised from aerial photographs taken 1960. Field check 1961

Polyconic projection. 1927 North American datum
10,000-foot grid based on Oregon coordinate system, north zone
1000-meter Universal Transverse Mercator grid ticks,
zone 10, shown in blue

Red tint indicates areas in which only landmark buildings are shown
Fine red dashed lines indicate selected fence lines

Revisions shown in purple compiled from aerial photographs
taken 1970 and 1975. This information not field checked
Purple tint indicates extension of urban areas

UTM GRID AND 1975 MAGNETIC NORTH
DECLINATION AT CENTER OF SHEET



ROAD CLASSIFICATION
Medium-duty Road Light-duty Road
Unimproved dirt road
U.S. Route State Route
Heavy-duty

USGS
Historical File
Topographic Division

DAMASCUS, OREG.
NW/4 SANDY 15' QUADRANGLE
N4522.5-W12222.5/7.5

1961
PHOTOREVISED 1970 AND 1975
AMS 1574 IV NW-SERIES V892

JUL 06 1978

3250