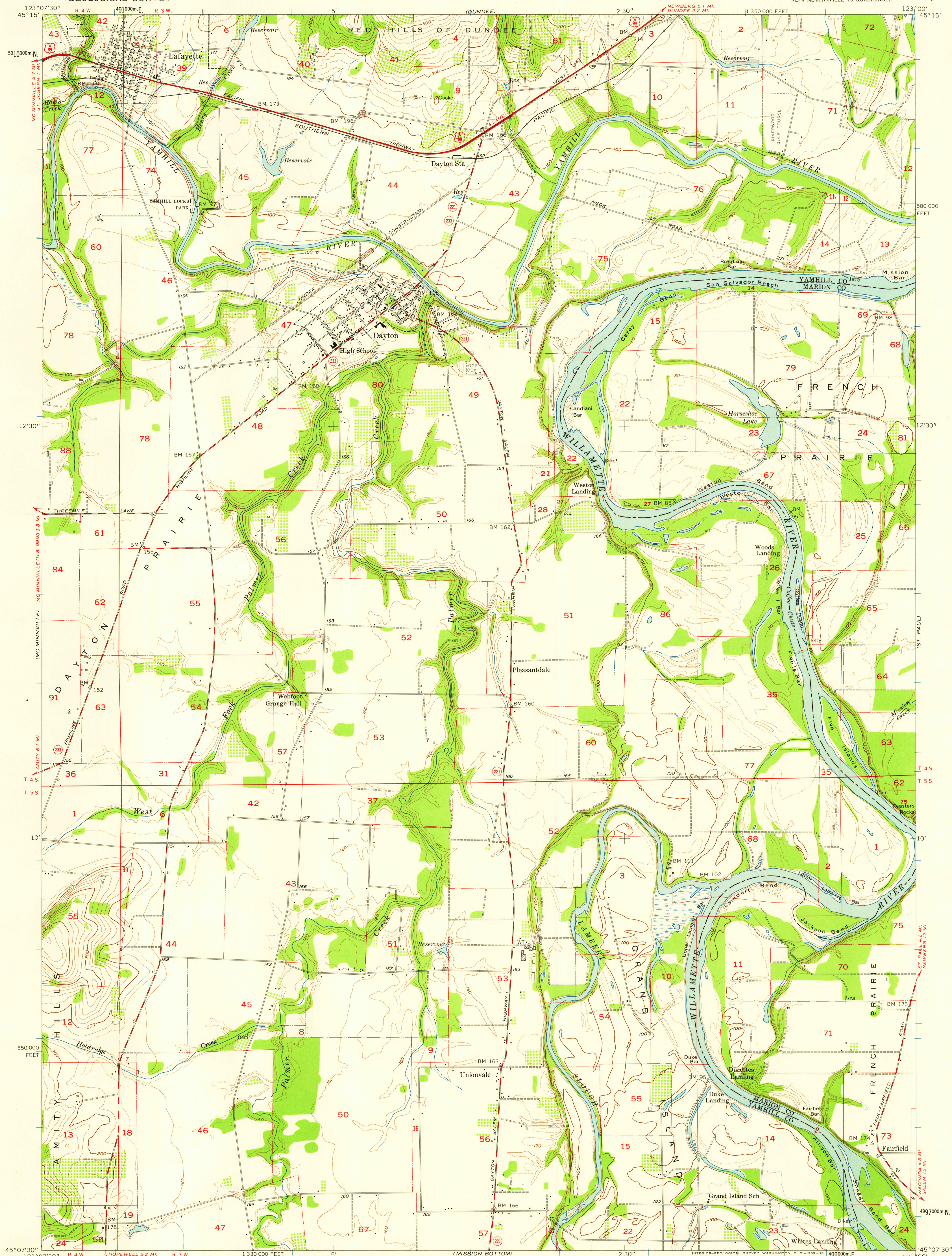


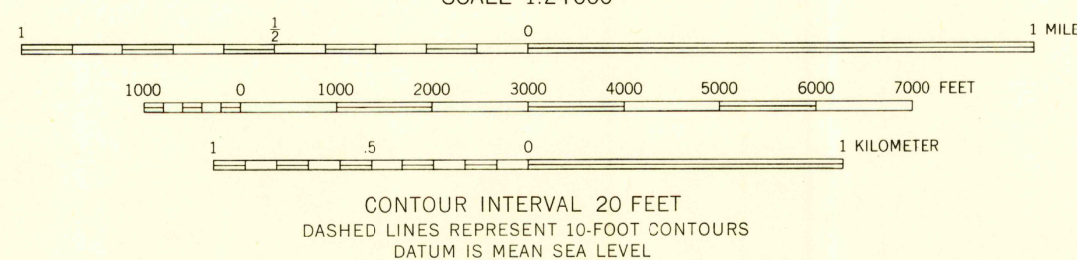
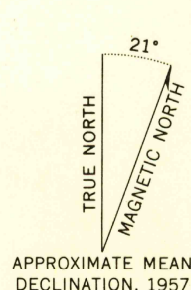
UNITED STATES
DEPARTMENT OF THE INTERIOR
GEOLOGICAL SURVEY

DAYTON QUADRANGLE
OREGON
7.5 MINUTE SERIES (TOPOGRAPHIC)
NE 1/4 MC MINNVILLE 15' QUADRANGLE

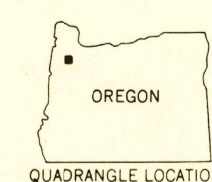


Mapped, edited, and published by the Geological Survey
Control by USGS, USC&GS, and USCE

Topography from aerial photographs by Kelsh plotter
and by planetable surveys 1957. Aerial photographs taken 1954
Polyconic projection. 1927 North American datum
10,000-foot grid based on Oregon coordinate system,
north zone
1000-meter Universal Transverse Mercator grid ticks,
zone 10, shown in blue



CONTOUR INTERVAL 20 FEET
DASHED LINES REPRESENT 10-FOOT CONTOURS
DATUM IS MEAN SEA LEVEL



ROAD CLASSIFICATION	
Heavy-duty	Light-duty
Medium-duty	Unimproved dirt
U.S. Route	State Route

DAYTON, OREG.
NE 1/4 MC MINNVILLE 15' QUADRANGLE
N4507.5—W12300.7/7.5

1957

THIS MAP COMPLIES WITH NATIONAL MAP ACCURACY STANDARDS
FOR SALE BY U. S. GEOLOGICAL SURVEY, DENVER 2, COLORADO OR WASHINGTON 25, D. C.
A FOLDER DESCRIBING TOPOGRAPHIC MAPS AND SYMBOLS IS AVAILABLE ON REQUEST

HISTORICAL
U.S.G.S.
FILE COPY
TOPOGRAPHIC DIVISION

FEB 10 1959

2880