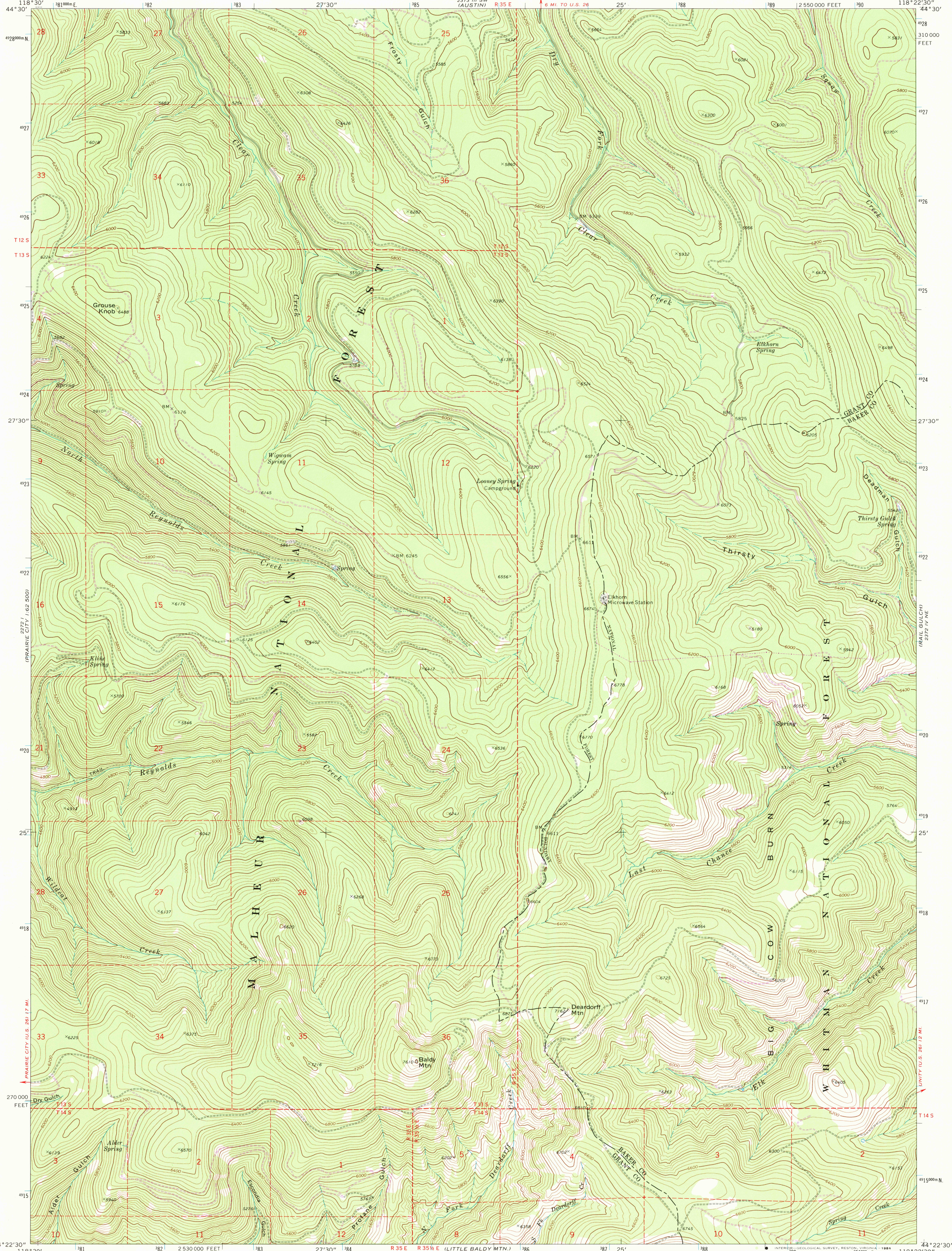
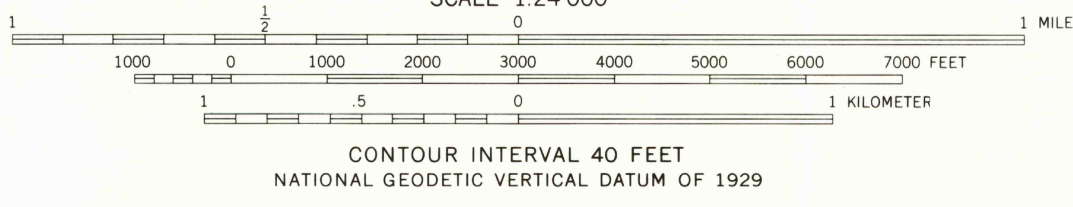
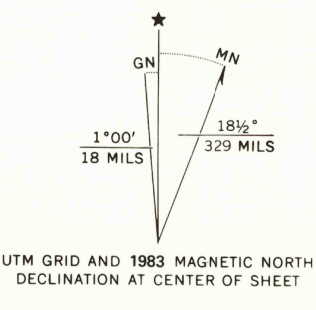


UNITED STATES  
DEPARTMENT OF THE INTERIOR  
GEOLOGICAL SURVEY

DEARDORFF MTN. QUADRANGLE  
OREGON  
7.5 MINUTE SERIES (TOPOGRAPHIC)



Mapped, edited, and published by the Geological Survey  
Control by USGS and NOS/NOAA  
Topography by photogrammetric methods from aerial photographs taken 1971. Field checked 1972  
Projection and 10,000-foot grid ticks: Oregon coordinate system, north zone (Lambert conformal conic)  
1000-meter Universal Transverse Mercator grid ticks, zone 11, shown in blue. 1927 North American datum  
To place on the predicted North American Datum 1983 move the projection lines 18 meters north and 83 meters east as shown by dashed corner ticks  
Where omitted, land lines have not been established  
There may be private inholdings within the boundaries of the National or State reservations shown on this map



ROAD CLASSIFICATION	
Primary highway, hard surface	Light-duty road, hard or improved surface
Secondary highway, hard surface	Unimproved road
Interstate Route	U. S. Route
	State Route

DEARDORFF MTN., OREG.  
N4422.5-W11822.5/7.5

1972  
PHOTOREVISED 1983  
DMA 2372 IV NW-SERIES V892

THIS MAP COMPLIES WITH NATIONAL MAP ACCURACY STANDARDS  
FOR SALE BY U. S. GEOLOGICAL SURVEY, DENVER, COLORADO 80225, OR RESTON, VIRGINIA 22092  
A FOLDER DESCRIBING TOPOGRAPHIC MAPS AND SYMBOLS IS AVAILABLE ON REQUEST

Revisions shown in purple and woodland compiled from aerial photographs taken 1981 and other source data.  
Partial field check by U.S. Forest service. Map edited 1983

RETURN TO:  
USGS AND HISTORICAL MAP ARCHIVES