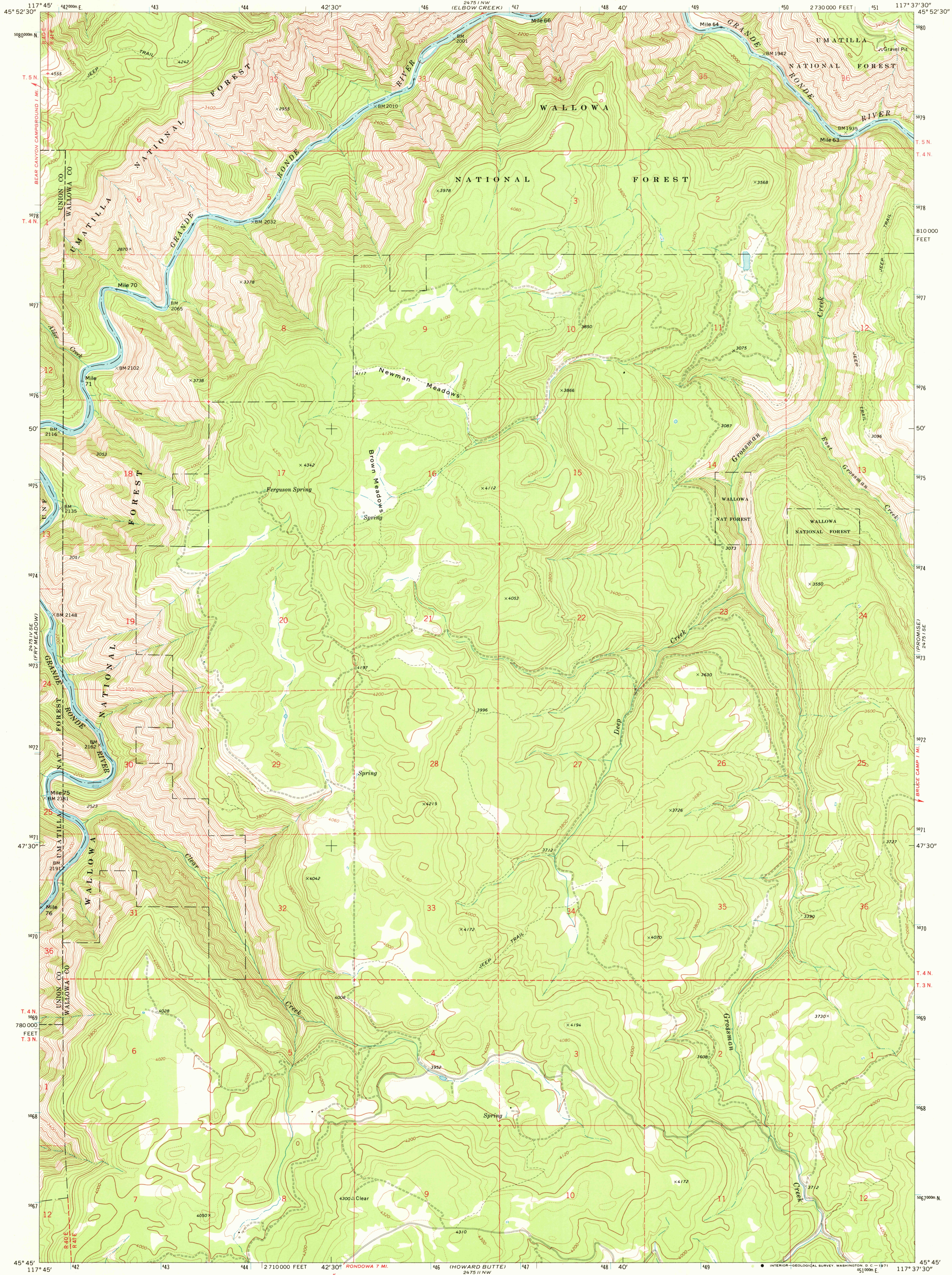
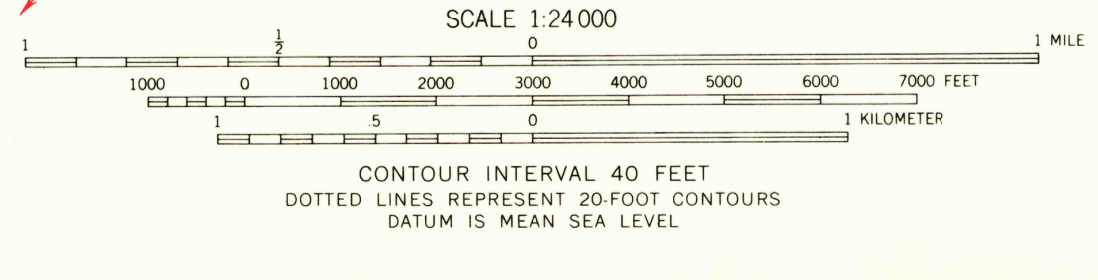
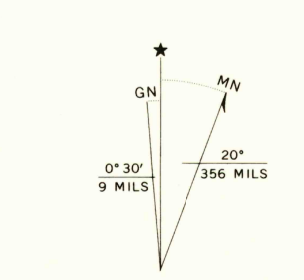


UNITED STATES
DEPARTMENT OF THE INTERIOR
GEOLOGICAL SURVEY

DEEP CREEK QUADRANGLE
OREGON
7.5 MINUTE SERIES (TOPOGRAPHIC)



Mapped, edited, and published by the Geological Survey
Control by USGS and USC&GS
Topography by photogrammetric methods from aerial
photographs taken 1966. Field checked 1967
Polyconic projection. 1927 North American datum
10,000-foot grid based on Oregon coordinate system,
north zone
1000-meter Universal Transverse Mercator grid ticks,
zone 11, shown in blue



ROAD CLASSIFICATION
Light duty ————— Unimproved dirt —————

DEEP CREEK, OREG.
N4545-W11737.5/7.5

USGS
HISTORICAL FILE
TOPOGRAPHIC DIVISION

AMS 2475 1 SW-SERIES V892

NOV 5 1971