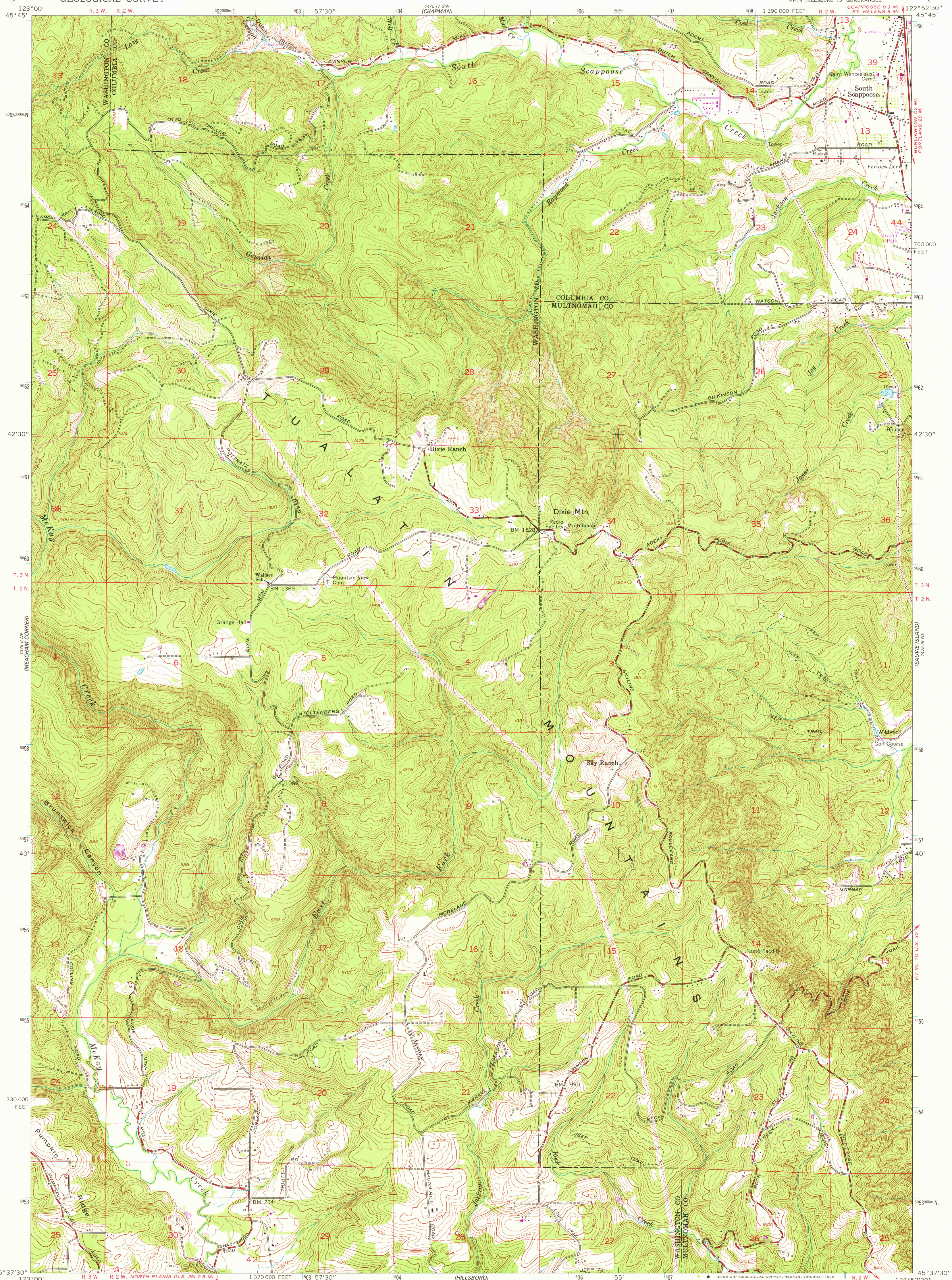


UNITED STATES  
DEPARTMENT OF THE INTERIOR  
GEOLOGICAL SURVEY

DIXIE MOUNTAIN QUADRANGLE  
OREGON  
7.5 MINUTE SERIES (TOPOGRAPHIC)



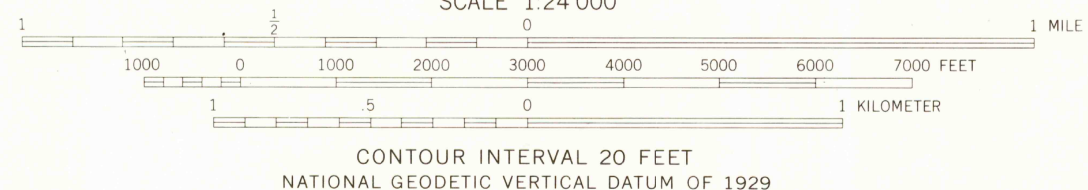
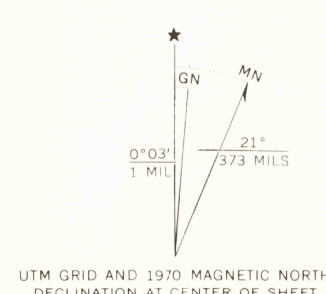
Mapped, edited, and published by the Geological Survey  
Control by USGS and USC&GS

Topography from aerial photographs by photogrammetric methods  
Aerial photographs taken 1951. Field check 1953  
Revised from aerial photographs taken 1960. Field check 1961

Polyconic projection. 1927 North American datum  
10,000-foot grid based on Oregon coordinate system, north zone  
1000-meter Universal Transverse Mercator grid ticks,  
zone 10, shown in blue

Dashed land lines indicate approximate locations  
Fine red dashed lines indicate selected fence lines

Revisions shown in purple compiled from aerial photographs  
taken 1970. This information not field checked



THIS MAP COMPLIES WITH NATIONAL MAP ACCURACY STANDARDS  
FOR SALE BY U. S. GEOLOGICAL SURVEY, DENVER, COLORADO 80225, OR RESTON, VIRGINIA 22092  
A FOLDER DESCRIBING TOPOGRAPHIC MAPS AND SYMBOLS IS AVAILABLE ON REQUEST



USGS  
Historical File  
Division

Map photoinspected 1975  
No major culture or drainage changes observed

ROAD CLASSIFICATION  
Heavy-duty ——— Light-duty ———  
Medium-duty ——— Unimproved dirt ———  
U.S. Route ———

DIXIE MOUNTAIN, OREG.  
NW 1/4 HILLSBORO 15' QUADRANGLE  
N4537.5-W12252.5/7.5  
PHOTOINSPECTED 1975  
1961  
PHOTOREVISED 1970  
AMS 1475 III NW-SERIES V892

JUL 05 1978