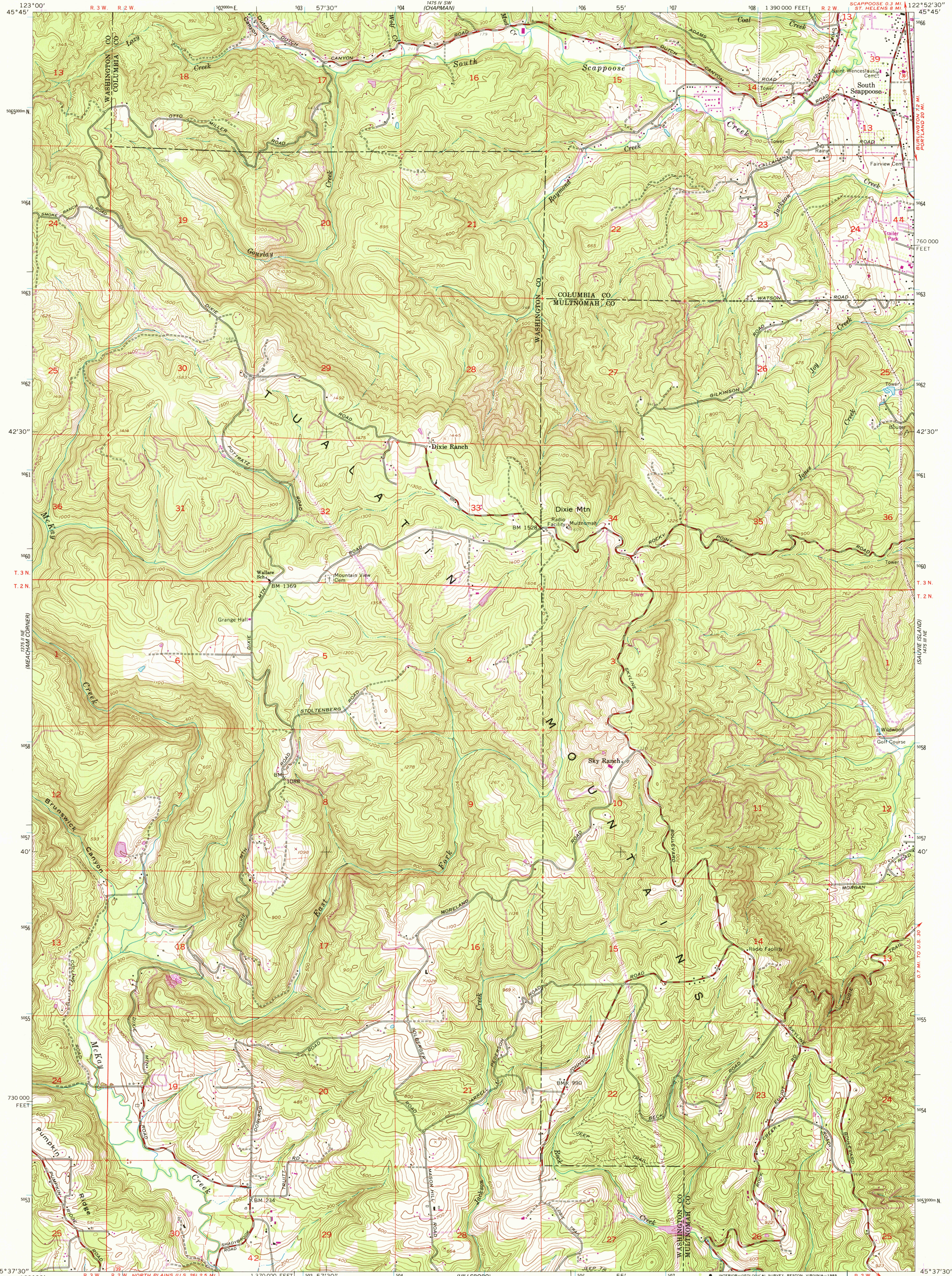


UNITED STATES
DEPARTMENT OF THE INTERIOR
GEOLOGICAL SURVEY

DIXIE MOUNTAIN QUADRANGLE
OREGON
7.5 MINUTE SERIES (TOPOGRAPHIC)

NW 1/4 HILLSBORO 15' QUADRANGLE

SCAPPOOSE 6.3 MI.
ST. HELENS 8 MI.



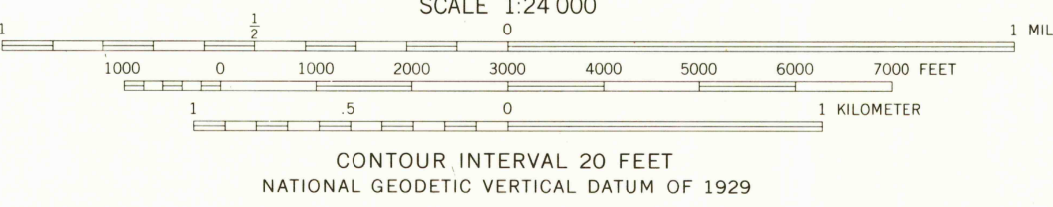
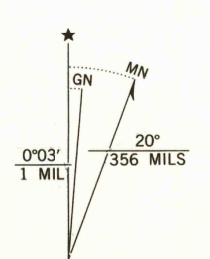
Mapped, edited, and published by the Geological Survey
Control by USGS and USC&GS

Topography from aerial photographs by photogrammetric methods
Aerial photographs taken 1951. Field check 1953
Revised from aerial photographs taken 1960. Field check 1961

Polyconic projection. 1927 North American datum
10,000-foot grid based on Oregon coordinate system, north zone
1000-meter Universal Transverse Mercator grid ticks,
zone 10, shown in blue

To place on the predicted North American Datum 1983,
move the projection lines 23 meters north and
95 meters east as shown by dashed corner ticks

Dashed land lines indicate approximate locations
Revisions shown in purple compiled from aerial
photographs taken 1981 and other sources
This information not field checked. Map edited 1985



ROAD CLASSIFICATION
Heavy-duty ——— Light-duty ———
Medium-duty ——— Unimproved dirt ———
U.S. Route

DIXIE MOUNTAIN, OREG.
NW 1/4 HILLSBORO 15' QUADRANGLE
45122-F8-TF-024

1961
PHOTOREVISED 1985
DMA 1475 III NW-SERIES V892

