

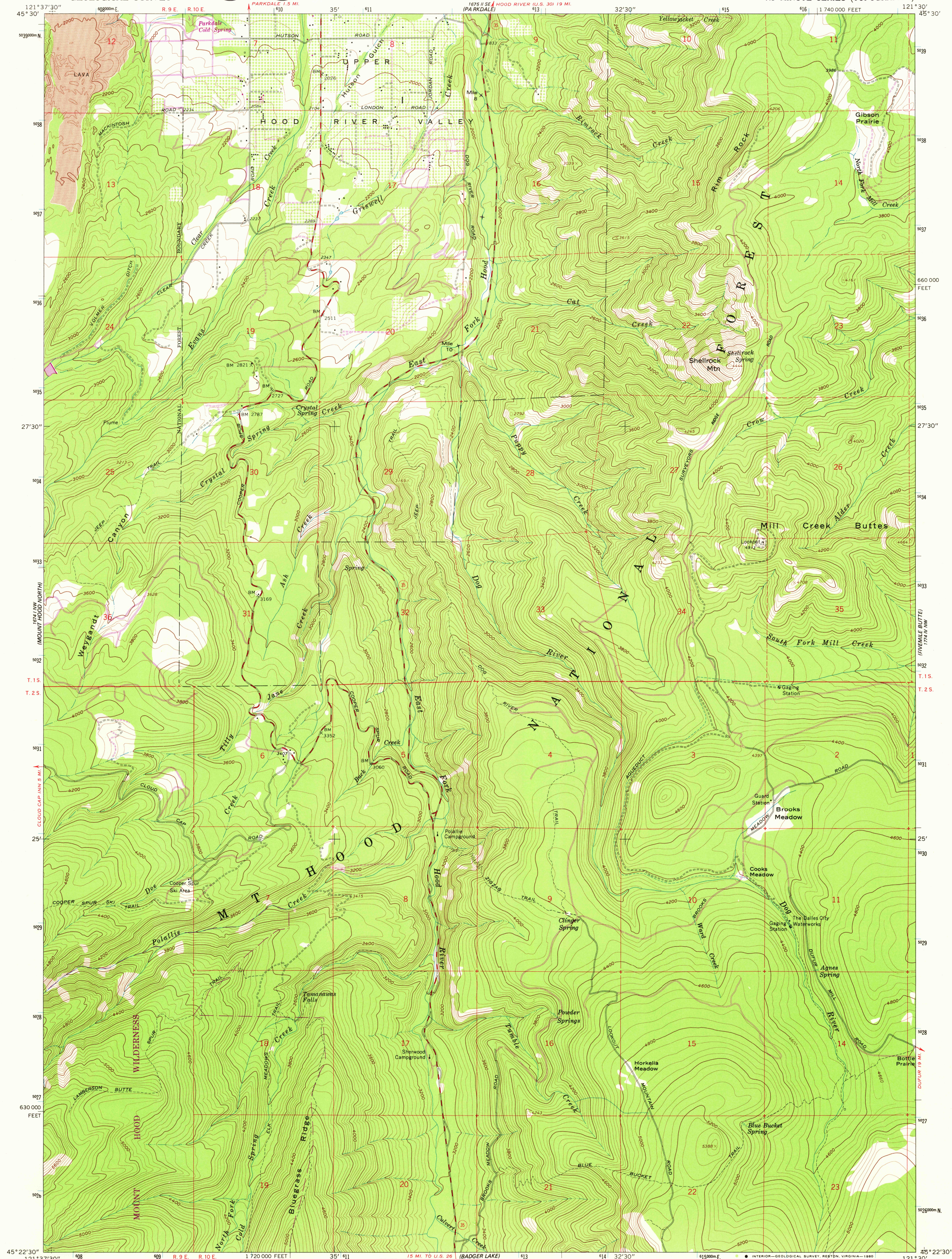
1:50,000
HOOD RIVER
1:50,000

UNITED STATES
DEPARTMENT OF THE INTERIOR
GEOLOGICAL SURVEY



DOG RIVER QUADRANGLE
OREGON—HOOD RIVER CO.
7.5 MINUTE SERIES (TOPOGRAPHIC)

175' H.W.
(KETCHUM RESERVOIR)



Mapped, edited, and published by the Geological Survey

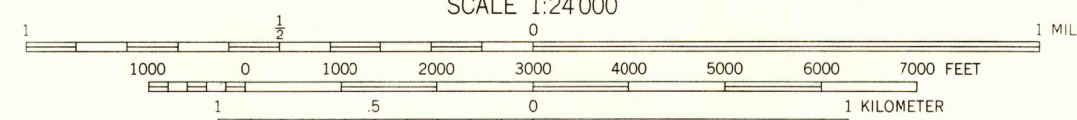
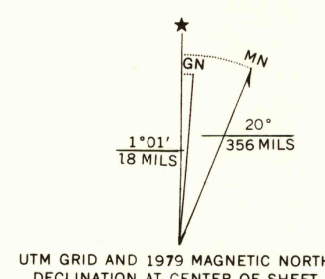
Control by USGS and NOS/NOAA

Topography by photogrammetric methods from aerial photographs taken 1956. Field checked 1962

Polycyclic projection. 1927 North American datum 10,000-foot grid based on Oregon coordinate system, north zone 1000-meter Universal Transverse Mercator grid ticks, zone 10, shown in blue

To place on the predicted North American Datum 1983 move the projection lines 21 meters north and 92 meters east as shown by dashed corner ticks

There may be private inholdings within the boundaries of the National or State reservations shown on this map



CONTOUR INTERVAL 40 FEET
DOTTED LINES REPRESENT 20-FOOT CONTOURS
NATIONAL GEODETIC VERTICAL DATUM OF 1929



ROAD CLASSIFICATION
Heavy-duty ——— Light-duty ———
Medium-duty ——— Unimproved dirt ———
State Route ———

USGS
Historical File
Topographic Division

DOG RIVER, OREG. 2425
N4522.5—W12130/7.5

1962
PHOTOREVISED 1979
DMA 1674 1 NE—SERIES V892

FOR SALE BY U. S. GEOLOGICAL SURVEY, DENVER, COLORADO 80225, OR RESTON, VIRGINIA 22092
A FOLDER DESCRIBING TOPOGRAPHIC MAPS AND SYMBOLS IS AVAILABLE ON REQUEST

Revisions shown in purple compiled by the U. S. Forest Service
from aerial photographs taken 1974 and other source data
This information not field checked. Map edited by the
Geological Survey 1979

MAY 14 1980