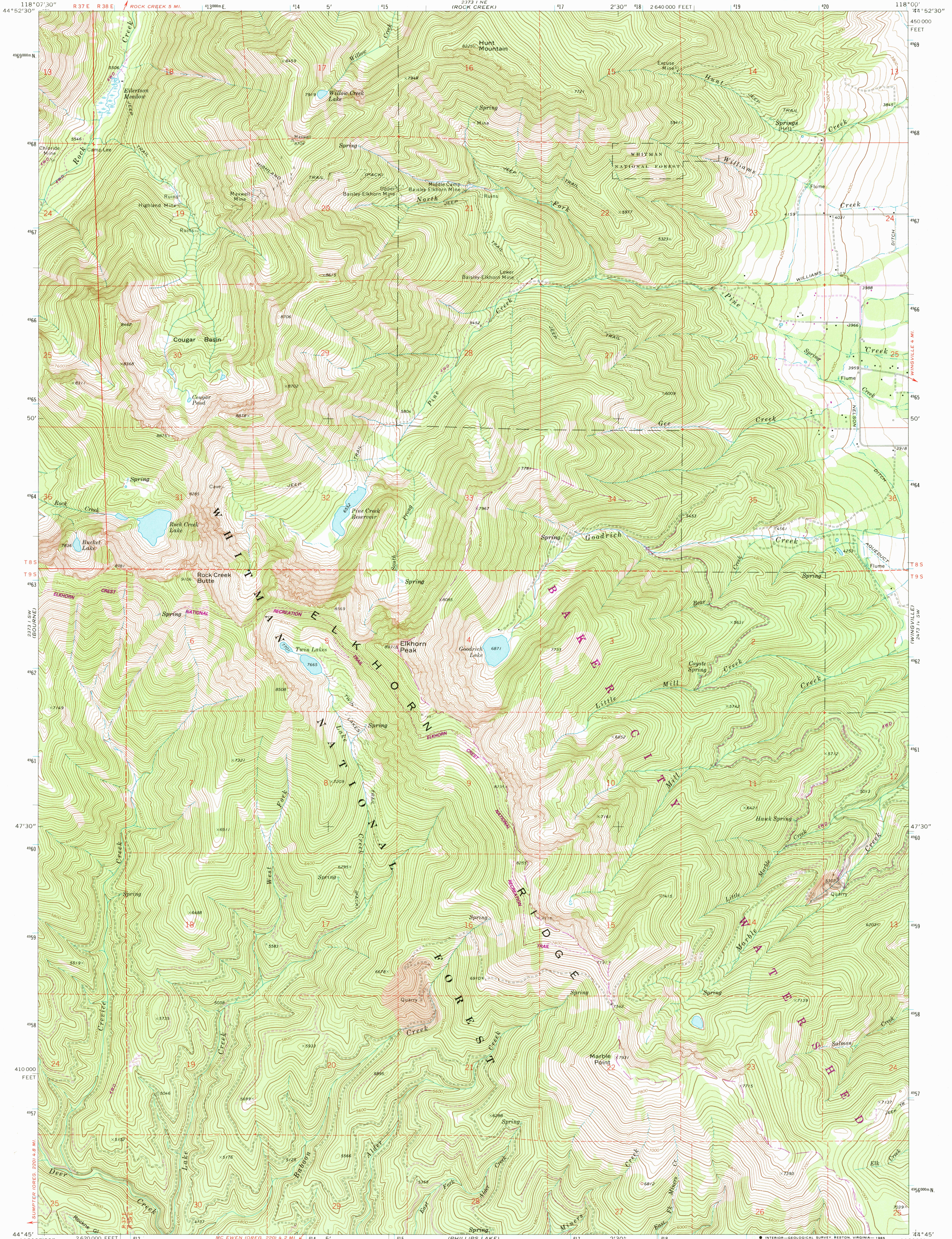


UNITED STATES  
DEPARTMENT OF THE INTERIOR  
GEOLOGICAL SURVEY

ELKHORN PEAK QUADRANGLE  
OREGON—BAKER CO.  
7.5 MINUTE SERIES (TOPOGRAPHIC)



Mapped, edited, and published by the Geological Survey

Control by USGS and NOS/NOAA

Topography by photogrammetric methods from aerial photographs taken 1971. Field checked 1972

Projection and 10,000-foot grid ticks: Oregon coordinate system, north zone (Lambert conformal conic)

1000-meter Universal Transverse Mercator grid ticks, zone 11, shown in blue. 1927 North American datum

To place on the predicted North American Datum 1983

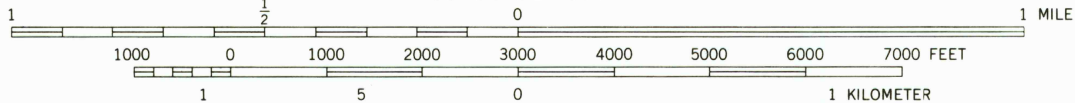
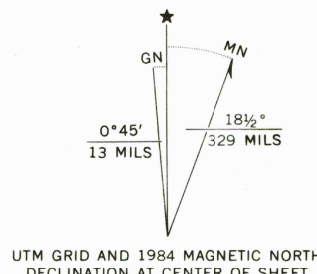
move the projection lines 17 meters north and

81 meters east as shown by dashed corner ticks

Fine red dashed lines indicate selected fence lines

Where omitted, land lines have not been established

There may be private inholdings within the boundaries of the National or State reservations shown on this map



CONTOUR INTERVAL 40 FEET  
NATIONAL GEODETIC VERTICAL DATUM OF 1929

THIS MAP COMPLIES WITH NATIONAL MAP ACCURACY STANDARDS  
FOR SALE BY U. S. GEOLOGICAL SURVEY, DENVER, COLORADO 80225, OR RESTON, VIRGINIA 22092  
A FOLDER DESCRIBING TOPOGRAPHIC MAPS AND SYMBOLS IS AVAILABLE ON REQUEST



ROAD CLASSIFICATION	
Primary highway, hard surface	Light-duty road, hard or improved surface
Secondary highway, hard surface	Unimproved road
Interstate Route	U. S. Route
	State Route

ELKHORN PEAK, OREG.

44118-G1-TF-024

1972  
PHOTOREVISED 1984

DMA 2373 I SE—SERIES Y892

Revision shown in purple and woodland compiled from aerial photographs taken 1981 and other sources  
Partial field check by U.S. Forest Service. Map edited 1984