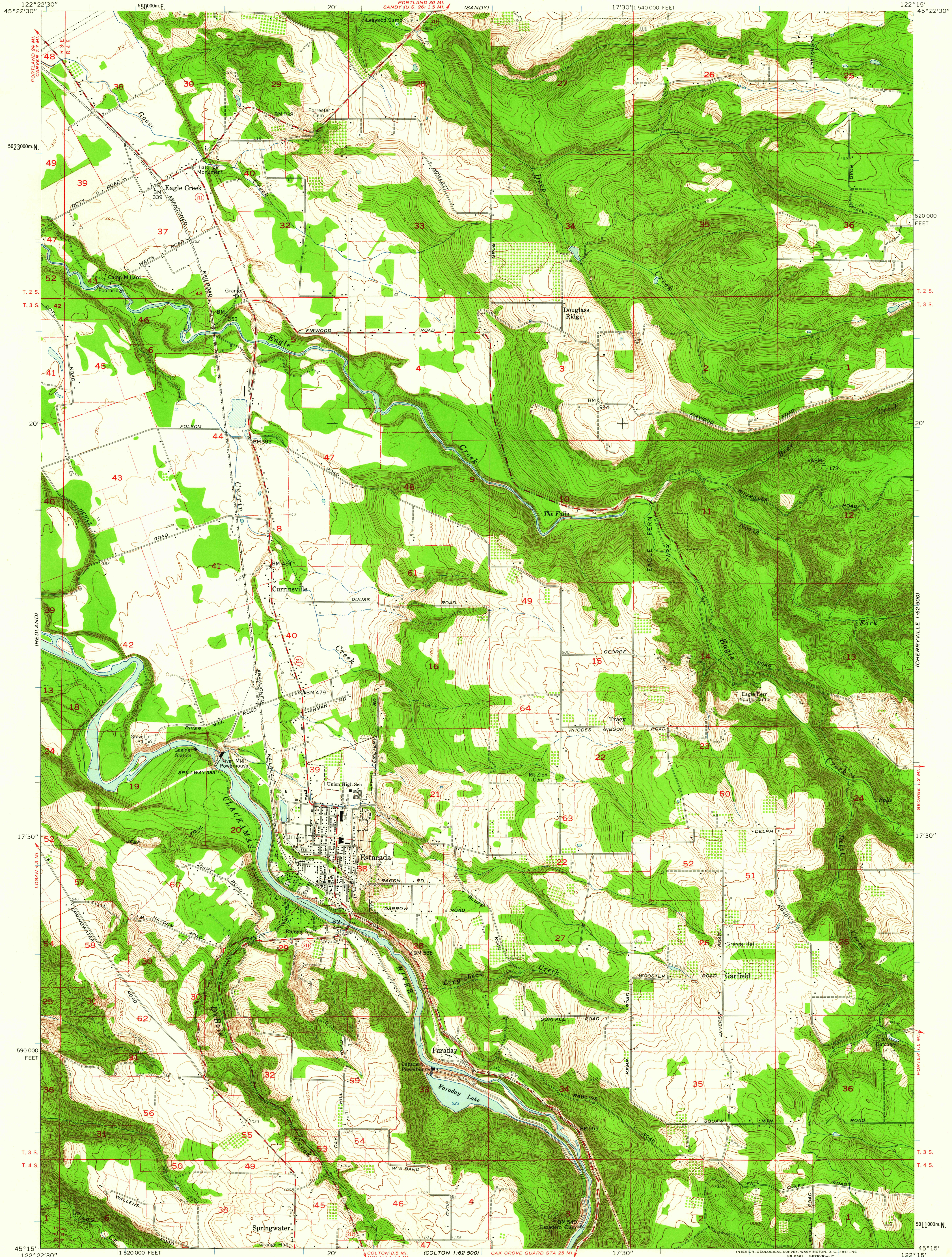


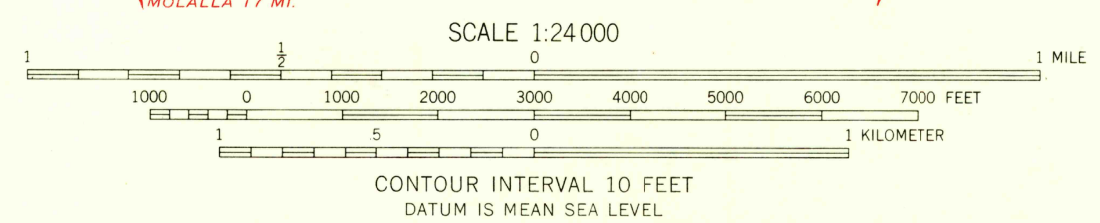
UNITED STATES
DEPARTMENT OF THE INTERIOR
GEOLOGICAL SURVEY

ESTACADA QUADRANGLE
OREGON—CLACKAMAS CO.
7.5 MINUTE SERIES (TOPOGRAPHIC)
SE/4 SANDY 15' QUADRANGLE



Mapped, edited, and published by the Geological Survey
Control by USGS, USC&GS, and State of Oregon
Topography from aerial photographs by photogrammetric methods
Aerial photographs taken 1952. Field check 1954
Revised from aerial photographs taken 1960. Field check 1961
Polyconic projection. 1927 North American datum
10,000-foot grid based on Oregon coordinate system, north zone
1000-meter Universal Transverse Mercator grid ticks, zone 10,
shown in blue
Dashed land lines indicate approximate locations
Fine red dashed lines indicate selected fence lines

TRUE NORTH
MAGNETIC NORTH
APPROXIMATE MEAN
DECLINATION, 1961



THIS MAP COMPLIES WITH NATIONAL MAP ACCURACY STANDARDS
FOR SALE BY U.S. GEOLOGICAL SURVEY, DENVER 25, COLORADO OR WASHINGTON 25, D. C.
A FOLDER DESCRIBING TOPOGRAPHIC MAPS AND SYMBOLS IS AVAILABLE ON REQUEST

USGS
Historical File
Topographic Division
ROAD CLASSIFICATION
Medium-duty
Light-duty
Unimproved dirt
State Route



U.S.G.S.
FILE COPY
TOPOGRAPHIC DIVISION
ESTACADA, OREG.
SE/4 SANDY 15' QUADRANGLE
N4515—W12215/7.5
1961

NOV 24 1961

2615

HISTORICAL