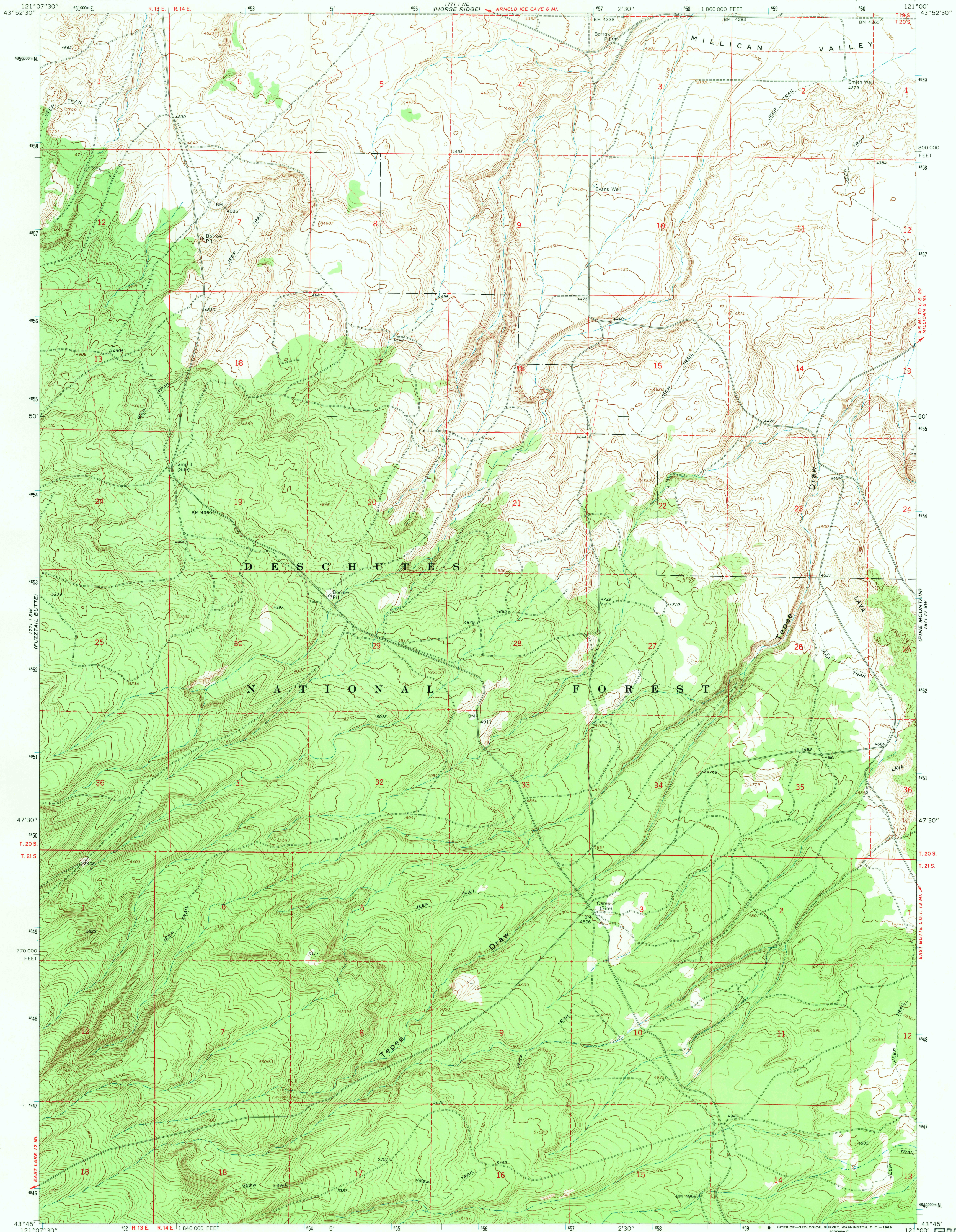
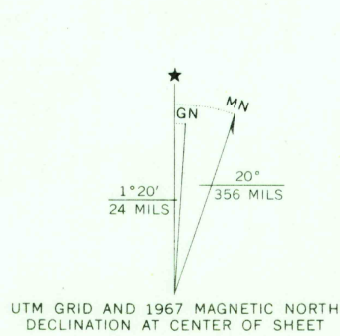


UNITED STATES  
DEPARTMENT OF THE INTERIOR  
GEOLOGICAL SURVEY

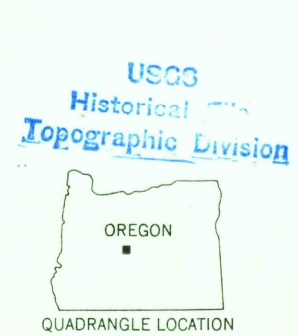
EVANS WELL QUADRANGLE  
OREGON—DESCHUTES CO.  
7.5 MINUTE SERIES (TOPOGRAPHIC)



Mapped, edited, and published by the Geological Survey  
Control by USGS and USC&GS  
Topography by photogrammetric methods from aerial  
photographs taken 1963. Field checked 1967.  
Polyconic projection. 1927 North American datum  
10,000-foot grid based on Oregon coordinate system,  
south zone  
1000-meter Universal Transverse Mercator grid ticks,  
zone 10, shown in blue  
Fine red dashed lines indicate selected fence lines



SCALE 1:24,000  
1 1000 0 1000 2000 3000 4000 5000 6000 7000 FEET  
1 1 5 10 KILOMETER  
CONTOUR INTERVAL 10 FEET  
DATUM IS MEAN SEA LEVEL  
THIS MAP COMPLIES WITH NATIONAL MAP ACCURACY STANDARDS  
FOR SALE BY U.S. GEOLOGICAL SURVEY, DENVER, COLORADO 80225, OR WASHINGTON, D.C. 20242  
A FOLDER DESCRIBING TOPOGRAPHIC MAPS AND SYMBOLS IS AVAILABLE ON REQUEST



ROAD CLASSIFICATION  
Light duty ————— Unimproved dirt - - - - -

EVANS WELL, OREG.  
N4345—W12100/7.5

U.S.G.S.  
FILE COPY  
TOPOGRAPHIC DIVISION

2885  
JAN 20 1970  
HISTORICAL