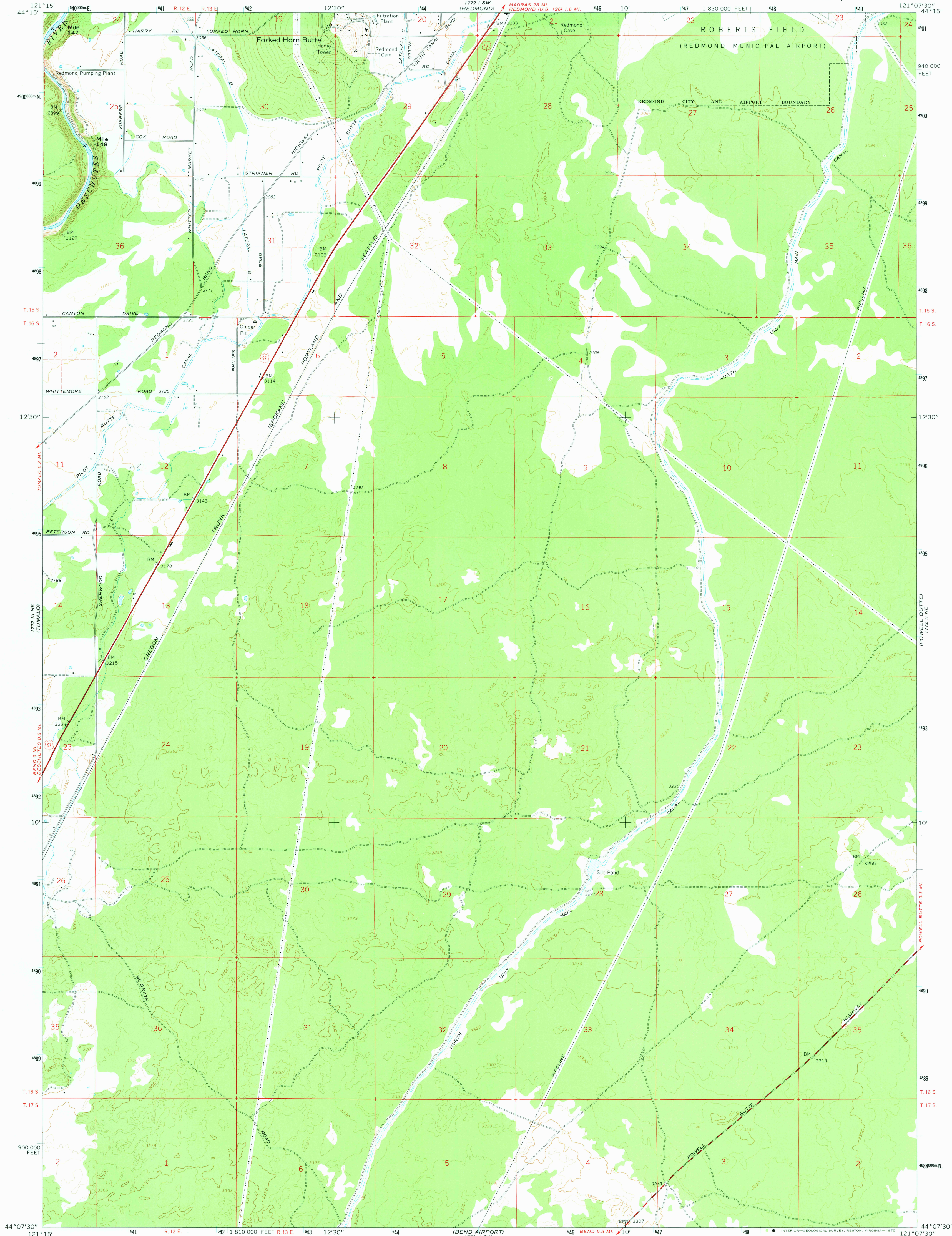
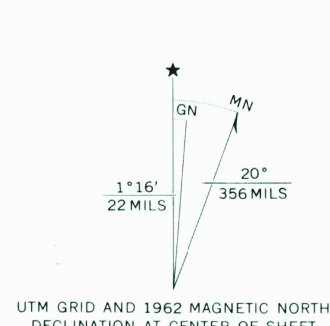


UNITED STATES
DEPARTMENT OF THE INTERIOR
GEOLOGICAL SURVEY

FORKED HORN BUTTE QUADRANGLE
OREGON—DESCHUTES CO.
7.5 MINUTE SERIES (TOPOGRAPHIC)



Mapped, edited, and published by the Geological Survey
Control by USGS and USC&GS
Topography by photogrammetric methods from aerial
photographs taken 1957. Field checked 1962
Polyconic projection. 1927 North American datum
10,000-foot grid based on Oregon coordinate system, south zone
1000-metre Universal Transverse Mercator grid ticks,
zone 10, shown in blue
Fine red dashed lines indicate selected fence lines



SCALE 1:24,000
CONTOUR INTERVAL 10 FEET
NATIONAL GEODETIC VERTICAL DATUM OF 1929
THIS MAP COMPLIES WITH NATIONAL MAP ACCURACY STANDARDS
FOR SALE BY U. S. GEOLOGICAL SURVEY, DENVER, COLORADO 80225, OR RESTON, VIRGINIA 22092
A FOLDER DESCRIBING TOPOGRAPHIC MAPS AND SYMBOLS IS AVAILABLE ON REQUEST



ROAD CLASSIFICATION
Heavy-duty ——— Light-duty ———
Medium-duty ——— Unimproved dirt ———
U. S. Route ———
FORKED HORN BUTTE, OREG.
N4407.5—W12107.5/7.5
1962
AMS 1772 II NW—SERIES V892