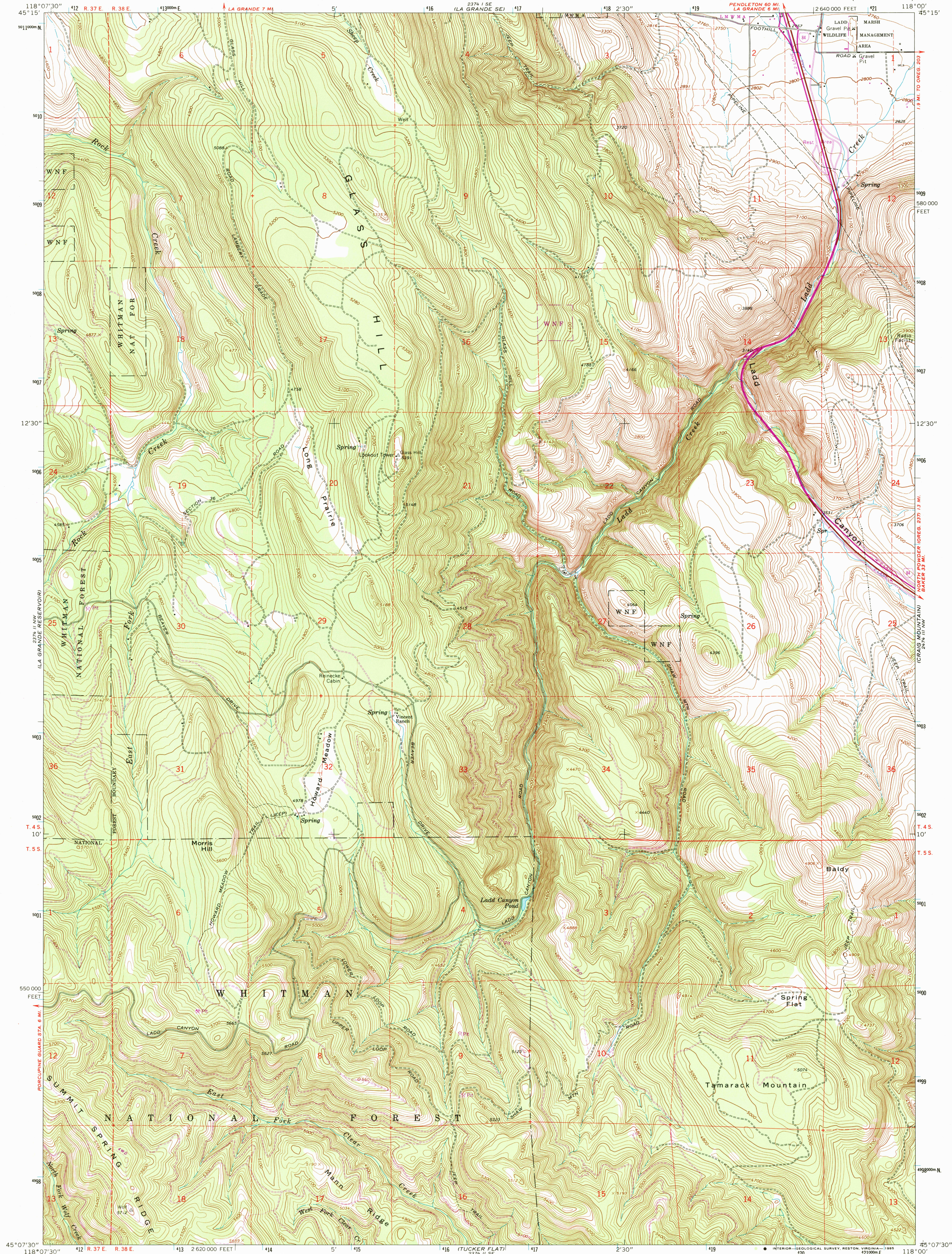
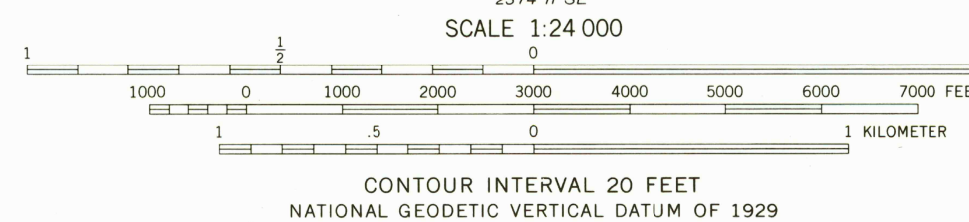
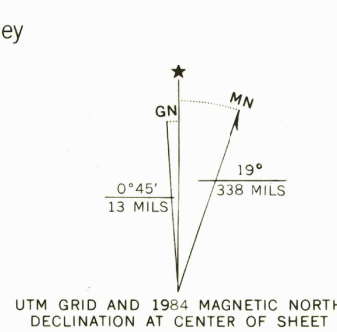


UNITED STATES  
DEPARTMENT OF THE INTERIOR  
GEOLOGICAL SURVEY

GLASS HILL QUADRANGLE  
OREGON—UNION CO.  
7.5 MINUTE SERIES (TOPOGRAPHIC)



Mapped, edited, and published by the Geological Survey  
Control by USGS and NOS/NOAA  
Topography by photogrammetric methods from aerial photographs taken 1960. Field checked 1965  
Polyconic projection. 1927 North American datum  
10,000-foot grid based on Oregon coordinate system,  
north zone  
1000-meter Universal Transverse Mercator grid ticks,  
zone 11, shown in blue  
To place on the predicted North American Datum 1983  
move the projection lines 17 meters north and  
81 meters east as shown by dashed corner ticks  
Fine red dashed lines indicate selected fence lines  
There may be private inholdings within the boundaries of  
the National or State reservations shown on this map



ROAD CLASSIFICATION  
Heavy-duty ——— Light-duty ———  
Unimproved dirt ———  
Interstate Route ——— U.S. Route ———

GLASS HILL, OREG.  
45118-B1-TF-024  
1965  
PHOTOREVISED 1984  
DMA 2374 II NE—SERIES V892

THIS MAP COMPLIES WITH NATIONAL MAP ACCURACY STANDARDS  
FOR SALE BY U.S. GEOLOGICAL SURVEY, DENVER, COLORADO 80225, OR RESTON, VIRGINIA 22092  
A FOLDER DESCRIBING TOPOGRAPHIC MAPS AND SYMBOLS IS AVAILABLE ON REQUEST

Revision shown in purple and woodland compiled from  
aerial photographs taken 1981 and other sources  
Partial field check by U.S. Forest Service. Map edited 1984

RETURN TO:  
USGS AND HISTORICAL MAP ARCHIVES