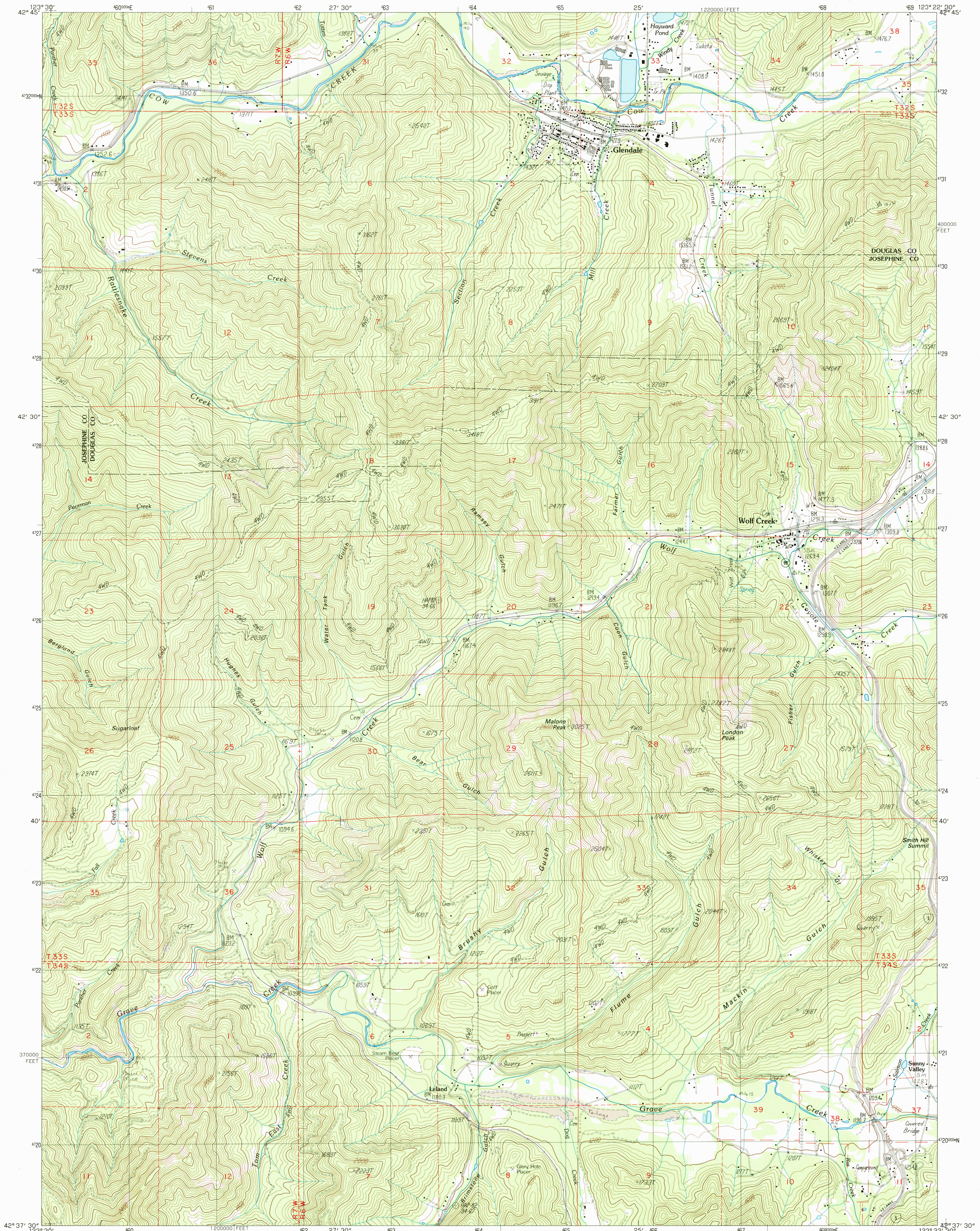


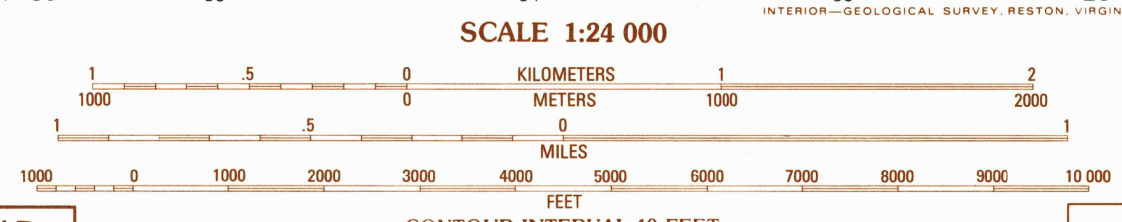
UNITED STATES
DEPARTMENT OF THE INTERIOR
GEOLOGICAL SURVEY

GLENDALE QUADRANGLE
OREGON
7.5 MINUTE SERIES (TOPOGRAPHIC)



PRODUCED BY THE UNITED STATES GEOLOGICAL SURVEY
CONTROL BY U.S.G.S. NOR NAD83 STATE OF OREGON
COMPILED FROM AERIAL PHOTOGRAPHS TAKEN 1982
FIELD CHECKED 1983. MAP EDITED 1986
PROJECTION LAMBERT CONFORMAL CONIC
GRID: 1000-METER UNIVERSAL TRANSVERSE MERCATOR ZONE 10
10,000-FOOT STATE GRID TICKS
UTM GRID DECLINATION 018° WEST
1980 MAGNETIC NORTH DECLINATION 18°30' EAST
VERTICAL DATUM 1927 NORTH AMERICAN DATUM
To place on the predicted North American Datum of 1983,
move the projection lines as shown by dashed corner ticks
(.21 meters north, .96 meters east).
There may be private inholdings within the boundaries of any
Federal and State Reservations shown on this map.
No distinction made between houses, barns, and other buildings.

PROVISIONAL MAP
Produced from original
manuscript drawings. Infor-
mation shown as of date of
photography.



1	2	3	1 Rabbit Mtn.
4	5	6	2 McCullough Creek
7	8	9	3 Quins Creek
			4 Mt. Reuben
			5 Golden
			6 Galice
			7 Merlin
			8 Sexton Mtn.

ROAD LEGEND
Improved Road.....
Unimproved Road.....
Trail.....
Interstate Route U.S. Route State Route

GLENDALE, OREG.
PROVISIONAL EDITION 1986

42123-F4-TF-024

