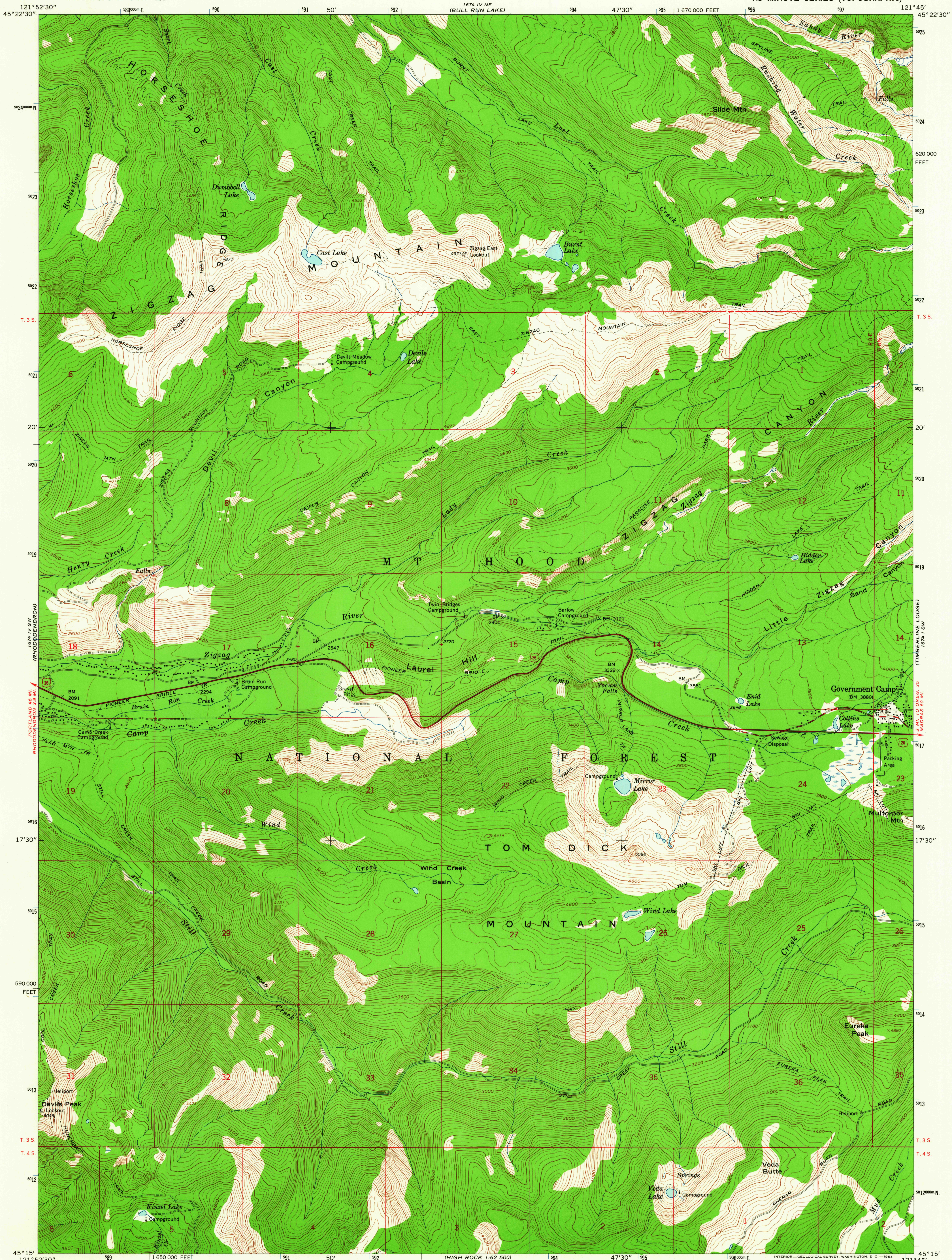
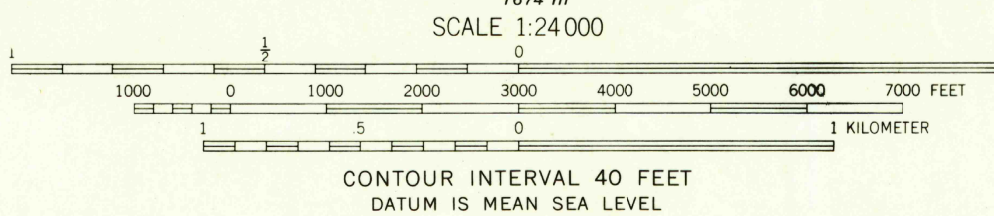
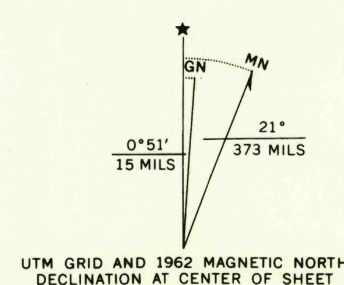


UNITED STATES
DEPARTMENT OF THE INTERIOR
GEOLOGICAL SURVEY

GOVERNMENT CAMP QUADRANGLE
OREGON—CLACKAMAS CO.
7.5 MINUTE SERIES (TOPOGRAPHIC)



Maped, edited, and published by the Geological Survey
Control by USGS and USC&GS
Topography by photogrammetric methods from aerial
photographs taken 1956 and 1957. Field checked 1962
Polyconic projection. 1927 North American datum
10,000-foot grid based on Oregon coordinate system, north zone
1000-meter Universal Transverse Mercator grid ticks,
zone 10, shown in blue
Where omitted, land lines have not been established



ROAD CLASSIFICATION
Heavy-duty ——— Light-duty ———
Medium-duty ——— Unimproved dirt ———
U.S. Route

GOVERNMENT CAMP, OREG.
N4515—W12145/7.5

1962

AMS 1674 IV SE—SERIES V892

FOR SALE BY U. S. GEOLOGICAL SURVEY, DENVER 25, COLORADO OR WASHINGTON 25, D. C.
A FOLDER DESCRIBING TOPOGRAPHIC MAPS AND SYMBOLS IS AVAILABLE ON REQUEST

USGS
Historical File
Topographic Division
4095
HISTORICAL
APR 20 1964