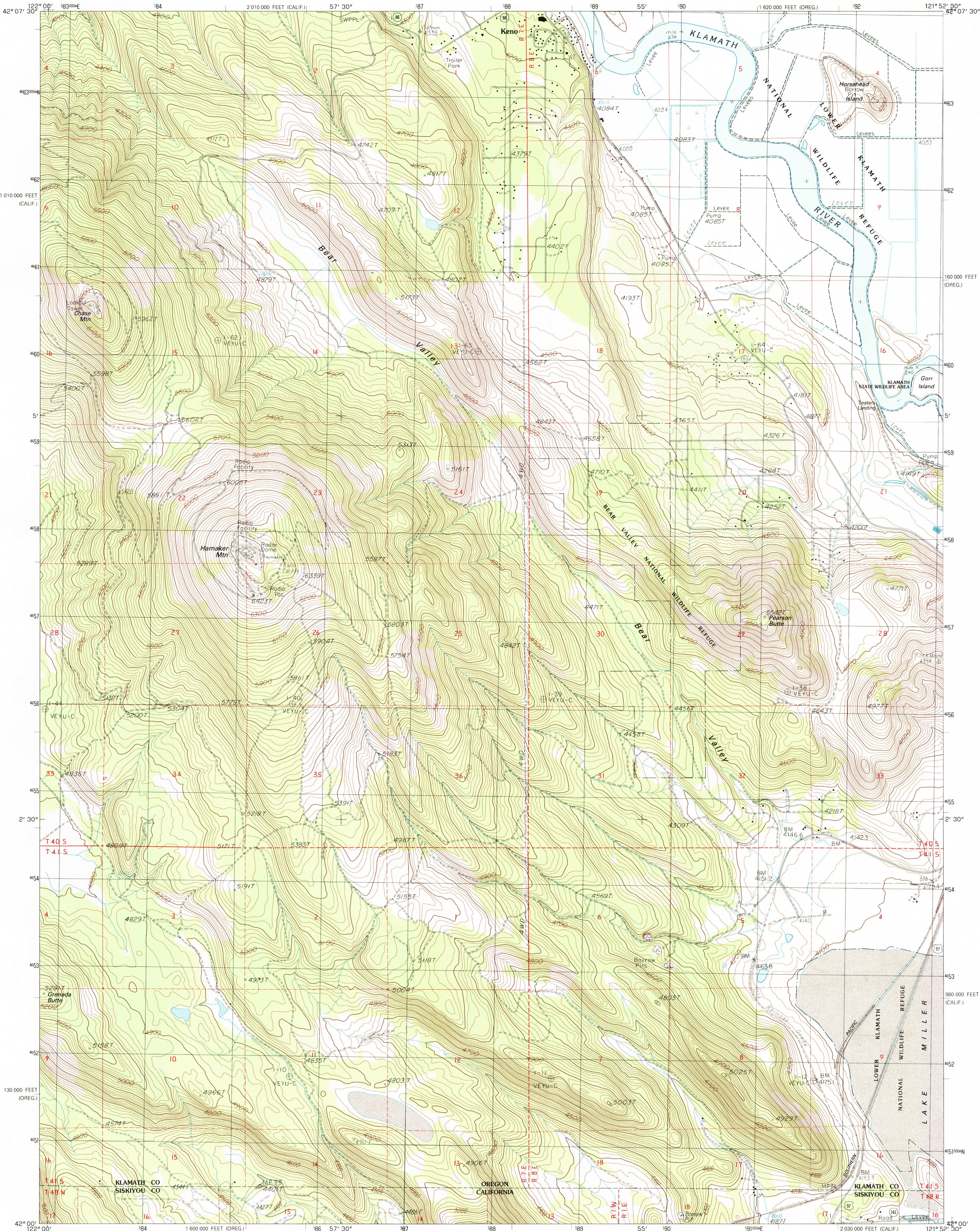


UNITED STATES
DEPARTMENT OF THE INTERIOR
GEOLOGICAL SURVEY

HAMAKER MTN. QUADRANGLE
OREGON—CALIFORNIA
7.5 MINUTE SERIES (TOPOGRAPHIC)



PRODUCED BY THE UNITED STATES GEOLOGICAL SURVEY
CONTROL BY USGS, NOS/NOAA
COMPILED FROM AERIAL PHOTOGRAPHS TAKEN 1986
FIELD CHECKED 1982. MAP EDITED 1986
PROJECTION LAMBERT CONFORMAL CONIC
GRID: 1000-METER UNIVERSAL TRANSVERSE MERCATOR ZONE 10
1000-FOOT STATE GRID TICKS, OREG. SOUTH ZONE AND CALIF. ZONE 1
UTM GRID DECLINATION 043° EAST
1980 MAGNETIC NORTH DECLINATION 18° EAST
VERTICAL DATUM NATIONAL GEODETIC VERTICAL DATUM OF 1929
HORIZONTAL DATUM 1927 NORTH AMERICAN DATUM
To place on the predicted North American Datum of 1983,
move the projection lines as shown by dashed corner ticks
(18 meters north / 94 meters east)
There may be private inholdings within the boundaries of any
Federal and State Reservations shown on this map

PROVISIONAL MAP
Produced from original
manuscript drawings. Infor-
mation shown as of date of
field check.

SCALE 1:24 000
1 1000 0 1000 2000 3000 4000 5000 6000 7000 8000 9000 10 000
FEET
KILOMETERS
METERS
MILES
CONTOUR INTERVAL 20 FEET
SUPPLEMENTARY CONTOUR INTERVAL 10 FEET
CONTROL ELEVATIONS SHOWN TO THE NEAREST 0.1 FOOT
OTHER ELEVATIONS SHOWN TO THE NEAREST FOOT
To convert meters to feet multiply by 3.2808
To convert feet to meters multiply by 0.3048

1	2	3	1	Spencer Creek
2	3	4	2	Keno
3	4	5	3	Klamath Falls
4	5	6	4	Chicken Hills
5	6	7	5	Warden
6	7	8	6	Sams Neck
7	8	9	7	Dorris
8	9	10	8	Sheepy Lake

ROAD LEGEND
Improved Road
Unimproved Road
Trail
Interstate Route U.S. Route State Route
HAMAKER MTN., OREG.—CALIF.
PROVISIONAL EDITION 1986

USGS NMD HISTORICAL MAP
SEP 22 1986
REC'D FILE COPY

THIS MAP COMPLIES WITH NATIONAL MAP ACCURACY STANDARDS
FOR SALE BY U. S. GEOLOGICAL SURVEY, DENVER, COLORADO 80225, OR RESTON, VIRGINIA 22092

42121-A8-TF-024