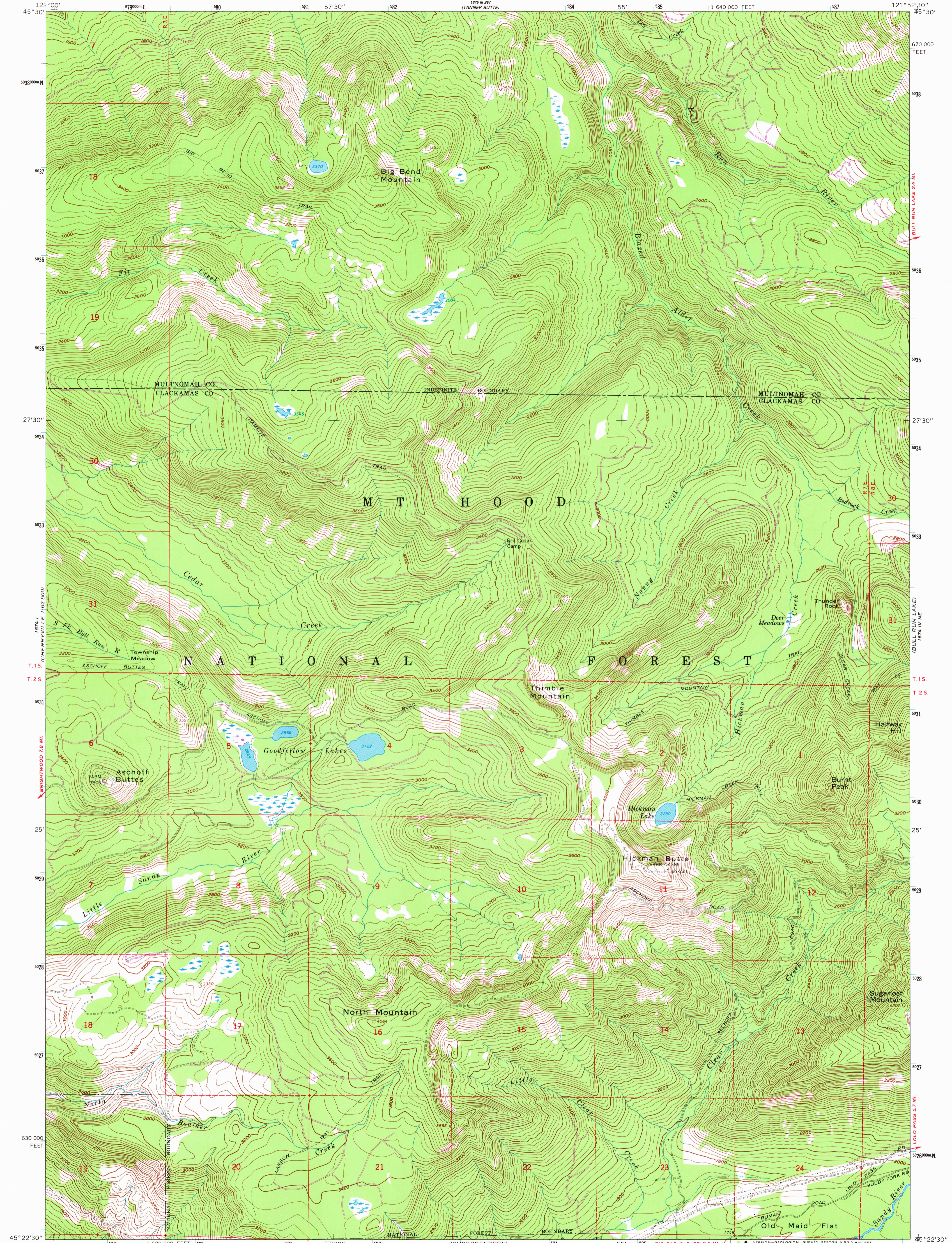
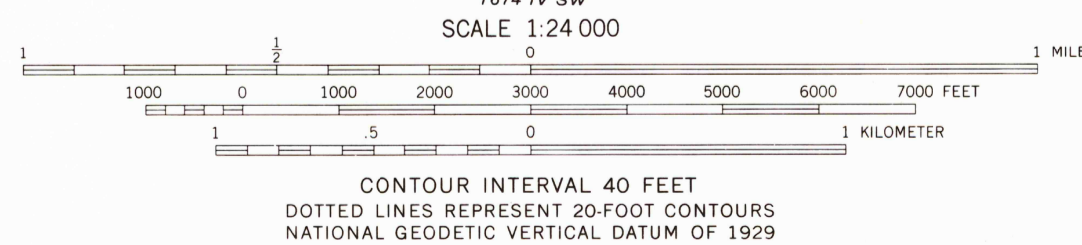
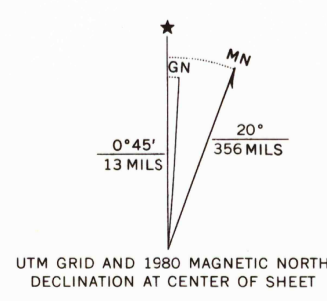


157°11' E  
1:62 500

158°58' E  
1:62 500



Mapped, edited, and published by the Geological Survey  
Control by USGS and NOS/NOAA  
Topography by photogrammetric methods from aerial  
photographs taken 1956. Field checked 1962  
Polyconic projection. 1927 North American datum  
10,000-foot grid based on Oregon coordinate system, north zone  
1000-meter Universal Transverse Mercator grid ticks,  
zone 10, shown in blue  
To place on the predicted North American Datum 1983,  
move the projection lines 22 meters north and  
92 meters east as shown by dashed corner ticks  
There may be private inholdings within the boundaries of  
the National or State reservations shown on this map



ROAD CLASSIFICATION  
Light-duty ————— Unimproved dirt =

HICKMAN BUTTE, OREG.  
N4522.5—W12152.5/7.5

FOR SALE BY U. S. GEOLOGICAL SURVEY, DENVER, COLORADO 80225, OR RESTON, VIRGINIA 22092  
A FOLDER DESCRIBING TOPOGRAPHIC MAPS AND SYMBOLS IS AVAILABLE ON REQUEST

Revisions shown in purple compiled by the U.S. Forest Service  
from aerial photographs taken 1973 and other source data  
This information not field checked. Map edited by the  
Geological Survey 1980

1962  
PHOTOREVISED 1980  
DMA 1674 IV NW—SERIES V892

RETURN TO:  
USGS NHD HISTORICAL MAP ARCHIVES

FEB 28 1983

3181