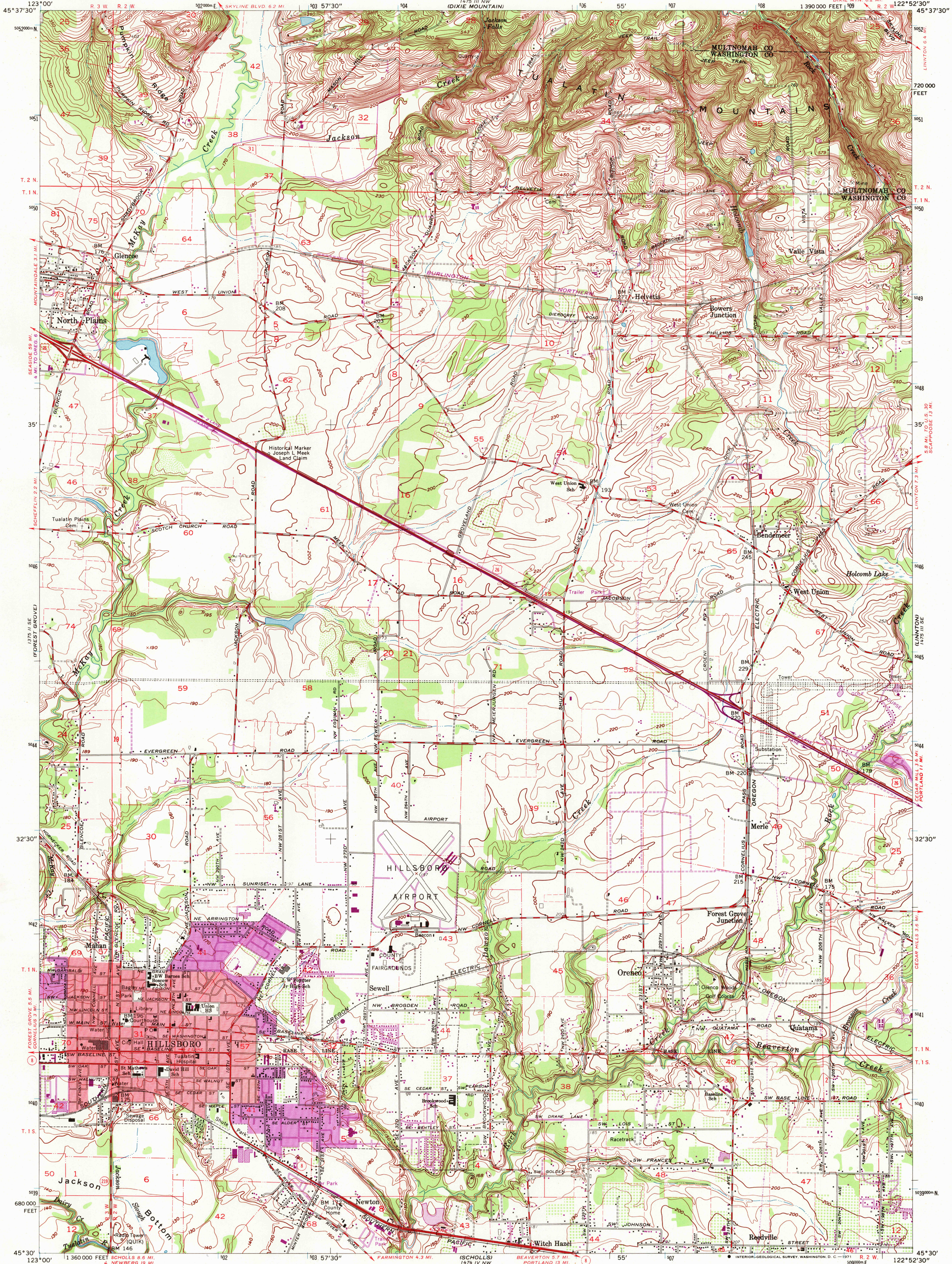


UNITED STATES
DEPARTMENT OF THE INTERIOR
GEOLOGICAL SURVEY

HILLSBORO QUADRANGLE
OREGON
7.5 MINUTE SERIES (TOPOGRAPHIC)
SW 1/4 HILLSBORO 15' QUADRANGLE
DIXIE MTN. 6.2 MI.
1390 000 FEET 109 R 2 W 122° 52' 30"



Maped, edited, and published by the Geological Survey
Control by USGS, USC&GS, and State of Oregon

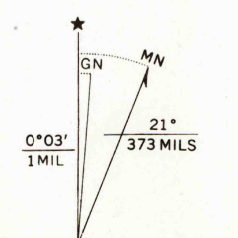
Topography from aerial photographs by photogrammetric methods
Aerial photographs taken 1952. Field check 1954
Revised from aerial photographs taken 1960. Field check 1961

Polyconic projection. 1927 North American datum
10,000-foot grid based on Oregon coordinate system, north zone
1000-meter Universal Transverse Mercator grid ticks,
zone 10, shown in blue

Red tint indicates area in which only landmark buildings are shown
Fine red dashed lines indicate selected fence lines

Revisions shown in purple compiled from aerial photographs
taken 1970. This information not field checked

Purple tint indicates extension of urban areas



SCALE 1:24,000

1000 0 1000 2000 3000 4000 5000 6000 7000 FEET
1 0 1 KILOMETER

CONTOUR INTERVAL 10 FEET
DATUM IS MEAN SEA LEVEL

THIS MAP COMPLIES WITH NATIONAL MAP ACCURACY STANDARDS

FOR SALE BY U. S. GEOLOGICAL SURVEY, DENVER, COLORADO 80225 OR WASHINGTON, D. C. 20242
A FOLDER DESCRIBING TOPOGRAPHIC MAPS AND SYMBOLS IS AVAILABLE ON REQUEST

ROAD CLASSIFICATION
Heavy-duty ——— Light-duty ———
Medium-duty ——— Unimproved dirt ———
U. S. Route ——— State Route ———



HILLSBORO, OREG.
SW 1/4 HILLSBORO 15' QUADRANGLE
N4530—W12252.5/7.5

1961
PHOTOREVISED 1970
AMS 1475 III SW—SERIES V892

HISTORICAL

2805
OCT 6 1971

USGS
HISTORICAL FILE
TOPOGRAPHIC DIVISION