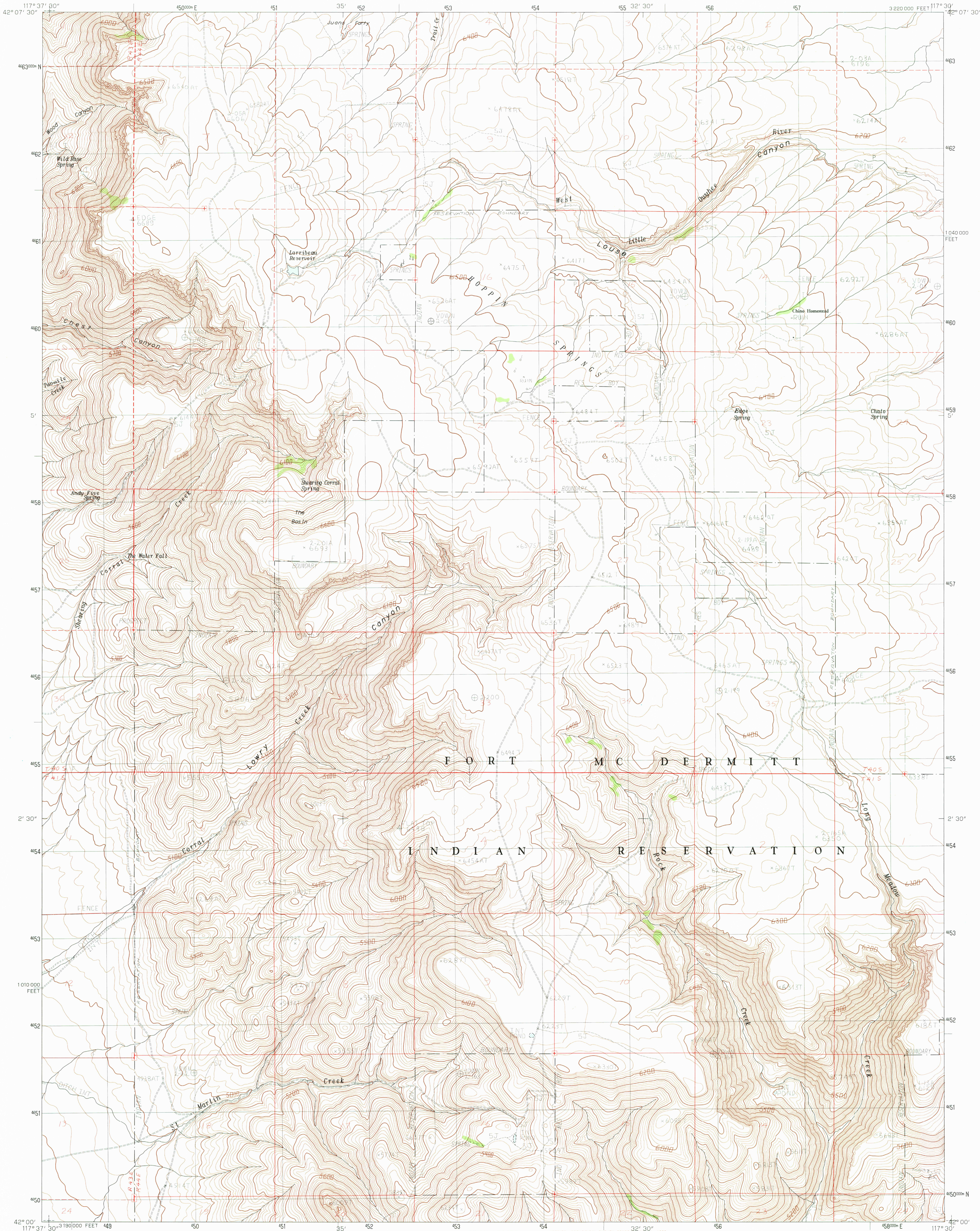


UNITED STATES
DEPARTMENT OF THE INTERIOR
GEOLOGICAL SURVEY

HOPPIN SPRINGS QUADRANGLE
OREGON—MALHEUR CO.
7.5 MINUTE SERIES (TOPOGRAPHIC)



PRODUCED BY THE UNITED STATES GEOLOGICAL SURVEY
CONTROL BY USGS, NOS/NOA
COMPILED FROM AERIAL PHOTOGRAPHS TAKEN 1975
FIELD CHECKED 1979 MAP EDITED 1982
PROJECTION LAMBERT CONFORMAL CONIC
GRID: 1000-METER UNIVERSAL TRANSVERSE MERCATOR ZONE 11
0.000-FOOT STATE GRID TICKS OREGON, SOUTH ZONE
UTM GRID DECLINATION 17° EAST
1983 MAGNETIC NORTH DECLINATION 17° EAST
VERTICAL DATUM: NATIONAL GEODETIC VERTICAL DATUM OF 1929
HORIZONTAL DATUM 1927 NORTH AMERICAN DATUM
To place on the predicted North American Datum of 1983,
move the projection lines as shown by dashed corner ticks
(15 meters north / 80 meters east)
There may be private inholdings within the boundaries of any
Federal and State Reservations shown on this map

PROVISIONAL MAP
Produced from original
manuscript drawings. Infor-
mation shown as of date of
field check.

THIS MAP COMPLIES WITH NATIONAL MAP ACCURACY STANDARDS
FOR SALE BY U. S. GEOLOGICAL SURVEY, DENVER, COLORADO 80225, OR RESTON, VIRGINIA 22092

SCALE 1:24 000
To convert meters to feet multiply by 3.2808
To convert feet to meters multiply by 0.3048

CONTOUR INTERVAL 20 FEET

1	2	3	Jackson Summit
4	5	6	Grasshopper Flat
7	8	9	South
10	11	12	Chimunk Basin
13	14	15	Tennille Ranch
16	17	18	Deer Flat
19	20	21	McDermitt
22	23	24	McConnell Peak
25	26	27	Odell Mountain

ROAD LEGEND
Improved Road
Unimproved Road
Trail
Interstate Route
U.S. Route
State Route

HOPPIN SPRINGS, OREG.
PROVISIONAL EDITION 1982

42117-A5-TF-024

RETURN TO:
USGS AND HISTORICAL MAP ARCHIVES

JAN 31 1984