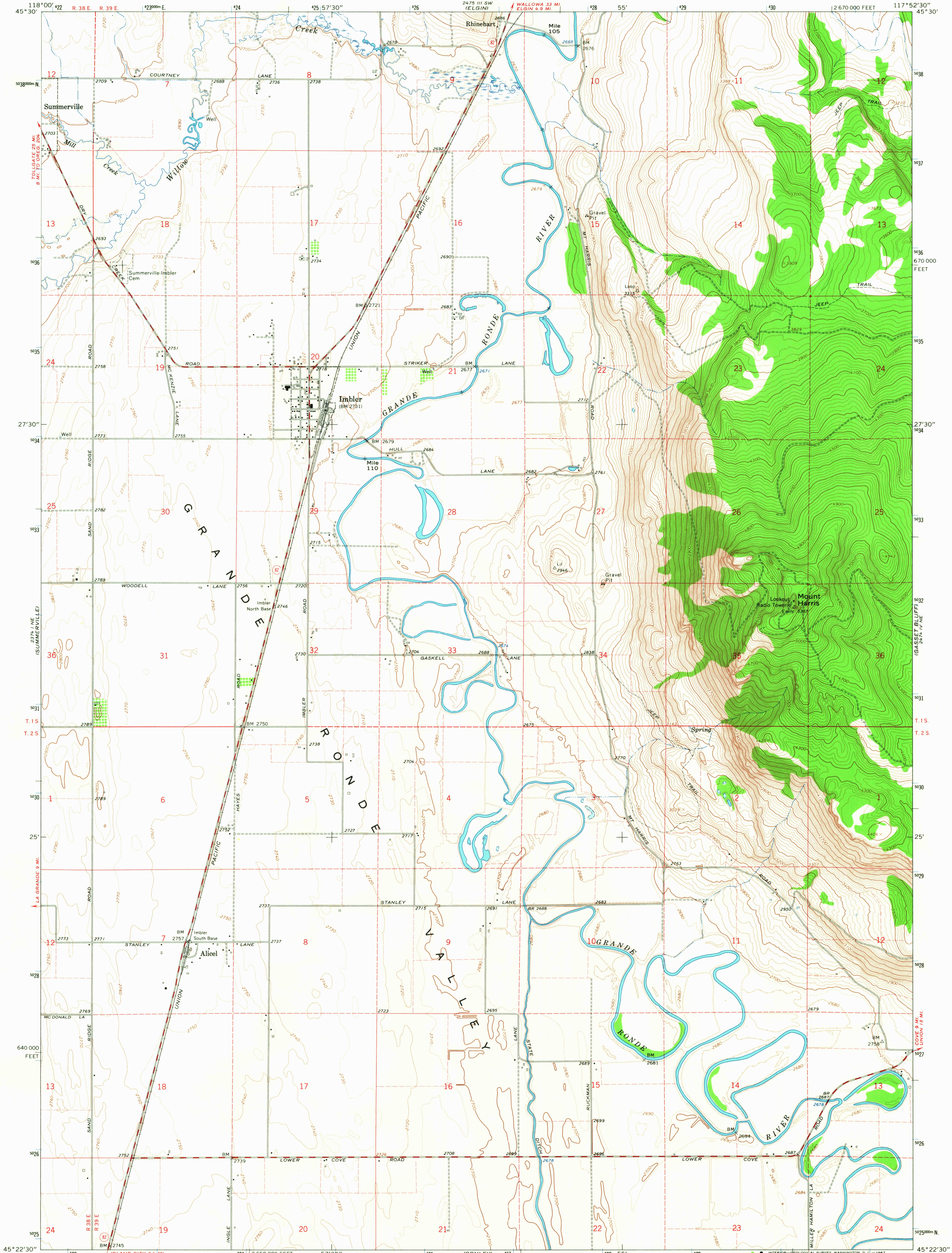


UNITED STATES
DEPARTMENT OF THE INTERIOR
GEOLOGICAL SURVEY

IMBLER QUADRANGLE
OREGON—UNION CO.
7.5 MINUTE SERIES (TOPOGRAPHIC)



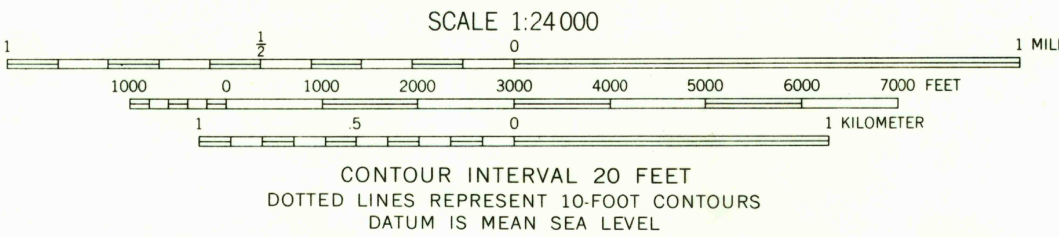
Mapped, edited, and published by the Geological Survey

Control by USGS and USC&GS

Topography by photogrammetric methods from aerial photographs taken 1963. Field checked 1965

Polyconic projection. 1927 North American datum
10,000-foot grid based on Oregon coordinate system,
north zone
1000-meter Universal Transverse Mercator grid ticks,
zone 11, shown in blue
Fine red dashed lines indicate selected fence lines

UTM GRID AND 1965 MAGNETIC NORTH
DECLINATION AT CENTER OF SHEET



USGS
Historical File
Topographic Division

ROAD CLASSIFICATION
Medium-duty — Light-duty
Unimproved dirt
State Route

USGS
TOPOGRAPHIC DIVISION

IMBLER, OREG.
N4522.5—W11752.5/7.5

1965
AMS 2474 IV NW—SERIES V892