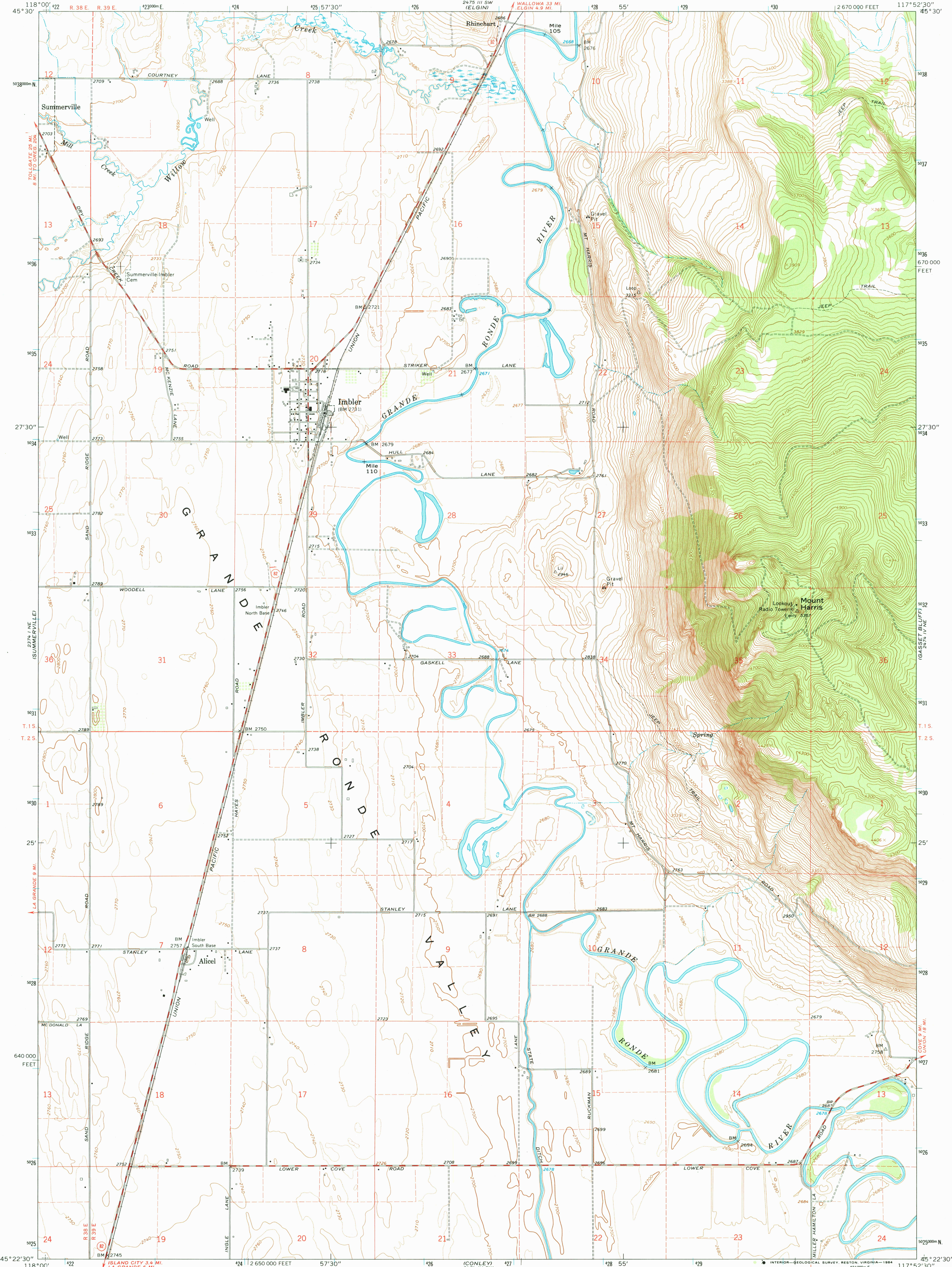


UNITED STATES
DEPARTMENT OF THE INTERIOR
GEOLOGICAL SURVEY

IMBLER QUADRANGLE
OREGON—UNION CO.
7.5 MINUTE SERIES (TOPOGRAPHIC)



Mapped, edited, and published by the Geological Survey
Control by USGS and USC&GS

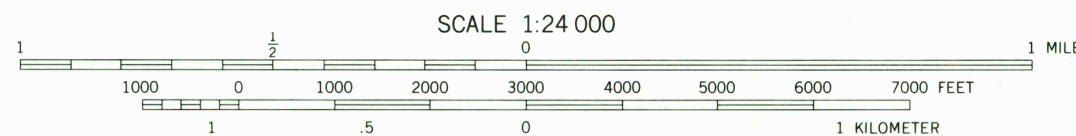
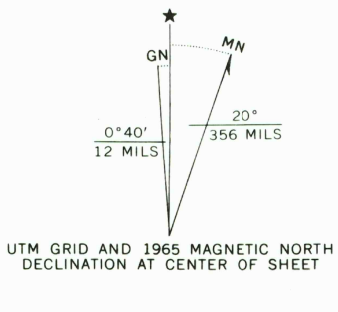
Topography by photogrammetric methods from aerial
photographs taken 1963. Field checked 1965

Polyconic projection. 1927 North American datum
10,000-foot grid based on Oregon coordinate system,
north zone

1000-meter Universal Transverse Mercator grid ticks,
zone 11, shown in blue

To place on the predicted North American Datum 1983,
move the projection lines 17 meters north and
81 meters east as shown by dashed corner ticks

Fine red dashed lines indicate selected fence lines



CONTOUR INTERVAL 20 FEET
DOTTED LINES REPRESENT 10-FOOT CONTOURS
NATIONAL GEODETIC VERTICAL DATUM OF 1929

THIS MAP COMPLIES WITH NATIONAL MAP ACCURACY STANDARDS
FOR SALE BY U. S. GEOLOGICAL SURVEY, DENVER, COLORADO 80225, OR RESTON, VIRGINIA 22092
A FOLDER DESCRIBING TOPOGRAPHIC MAPS AND SYMBOLS IS AVAILABLE ON REQUEST



ROAD CLASSIFICATION
Medium-duty ——— Light-duty ———
Unimproved dirt ———
State Route —○—

IMBLER, OREG.
N4522.5—W11752.5/7.5

1965
PHOTOINSPECTED 1978
DMA 2474 IV NW—SERIES V892

Map photoinspected 1976
No major culture or drainage changes observed

RETURN TO:
USGS NHD HISTORICAL MAP ARCHIVES