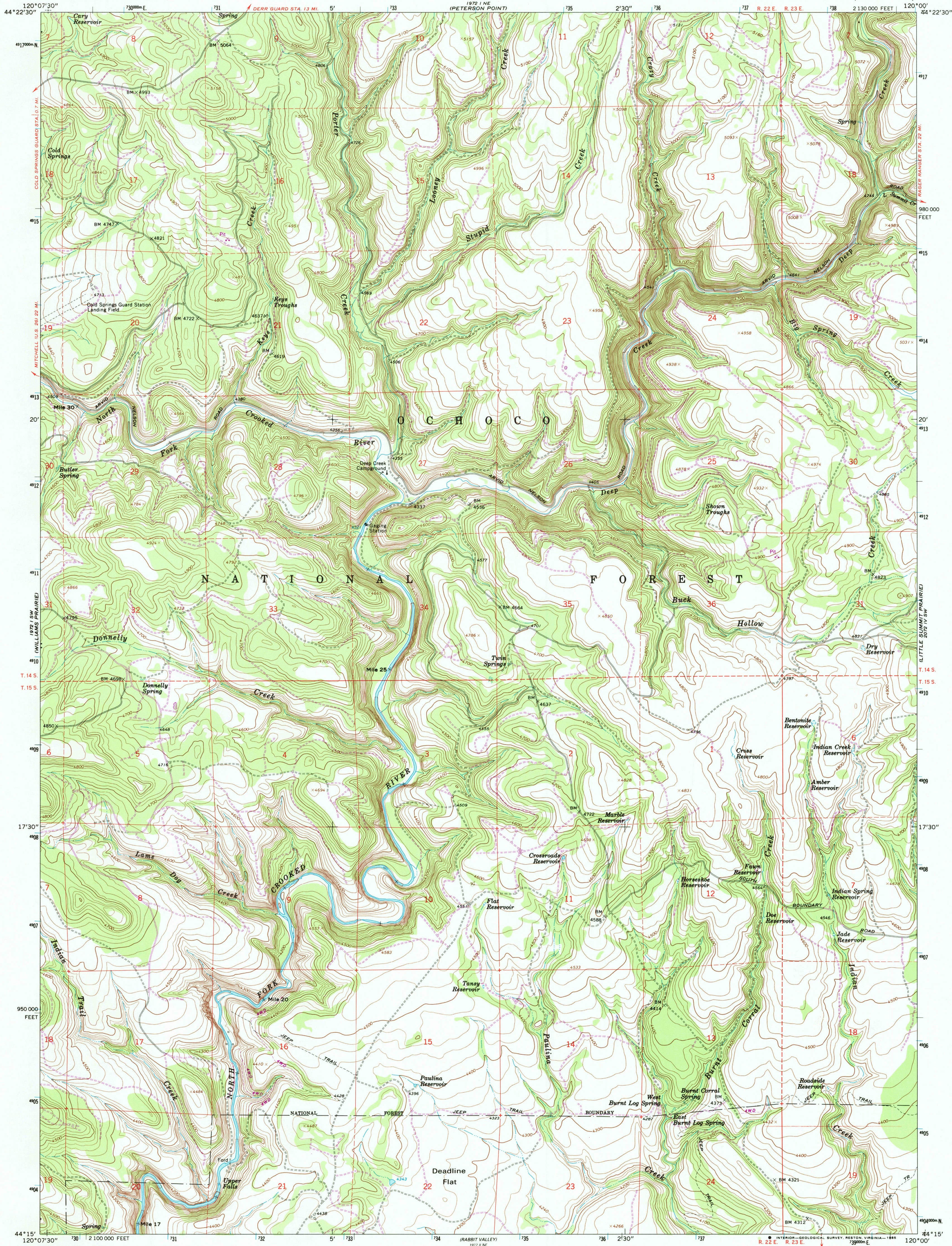


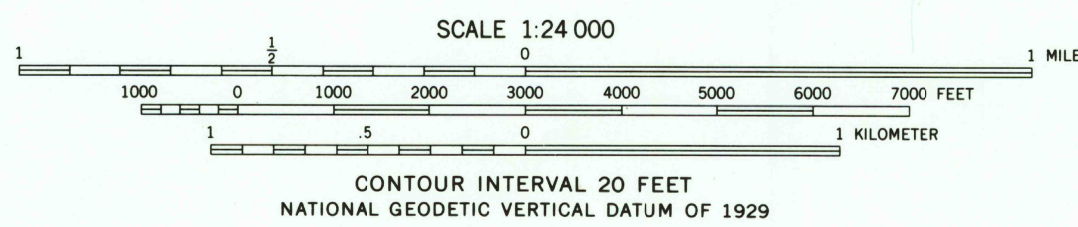
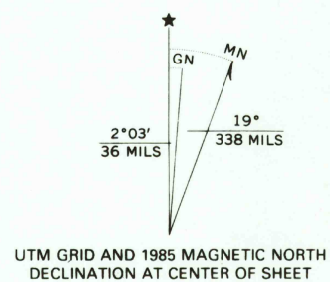
UNITED STATES  
DEPARTMENT OF THE INTERIOR  
GEOLOGICAL SURVEY

KEYS CREEK QUADRANGLE  
OREGON—CROOK CO.  
7.5 MINUTE SERIES (TOPOGRAPHIC)



Mapped, edited, and published by the Geological Survey

Control by USGS and NOS/NOAA  
Topography by photogrammetric methods from aerial  
photographs taken 1959. Field checked 1966  
Polyconic projection. 1927 North American datum  
10,000-foot grid based on Oregon coordinate system,  
south zone  
1000-meter Universal Transverse Mercator grid ticks,  
zone 10, shown in blue  
To place on the predicted North American Datum 1983  
move the projection lines 19 meters north and  
88 meters east as shown by dashed corner ticks  
There may be private inholdings within the boundaries of  
the National or State reservations shown on this map.



ROAD CLASSIFICATION  
Light-duty ————— Unimproved dirt —————

KEYS CREEK, OREG.  
44120-C1-TF-024

1966  
PHOTOREVISED 1985  
DMA 1972 I SE—SERIES V892

USGS NMD HISTORICAL MAP

MAR 14 1986

REC'D FILE COPY

THIS MAP COMPLIES WITH NATIONAL MAP ACCURACY STANDARDS  
FOR SALE BY U. S. GEOLOGICAL SURVEY, DENVER, COLORADO 80225, OR RESTON, VIRGINIA 22092  
A FOLDER DESCRIBING TOPOGRAPHIC MAPS AND SYMBOLS IS AVAILABLE ON REQUEST

Revision shown in purple compiled by Geological Survey  
from aerial photographs taken 1982. Partial field check  
by U.S. Forest Service. Map edited 1985