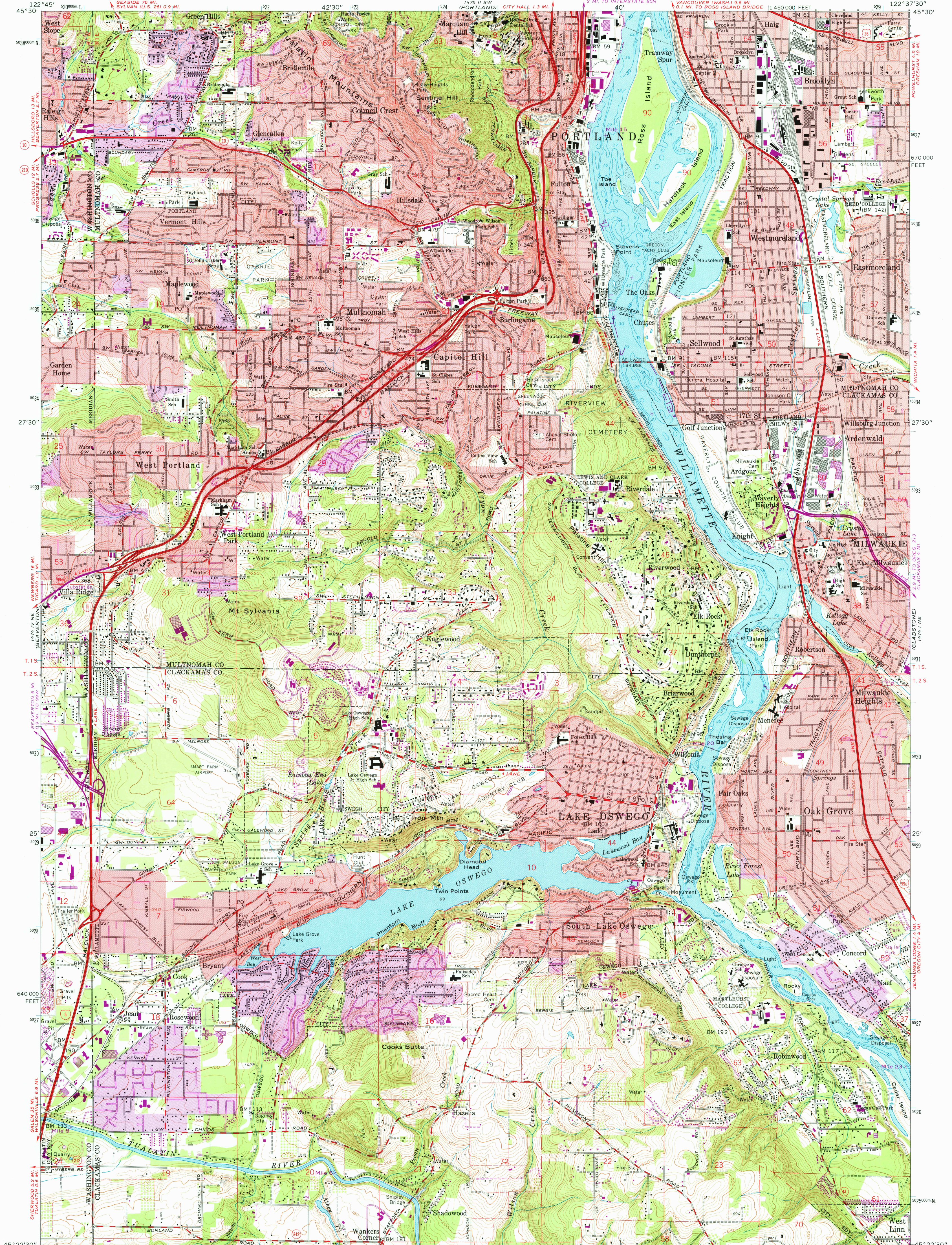
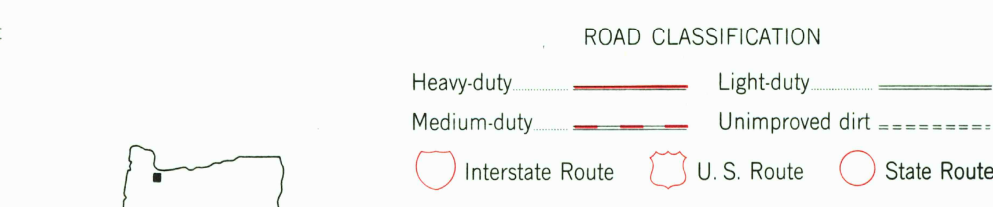
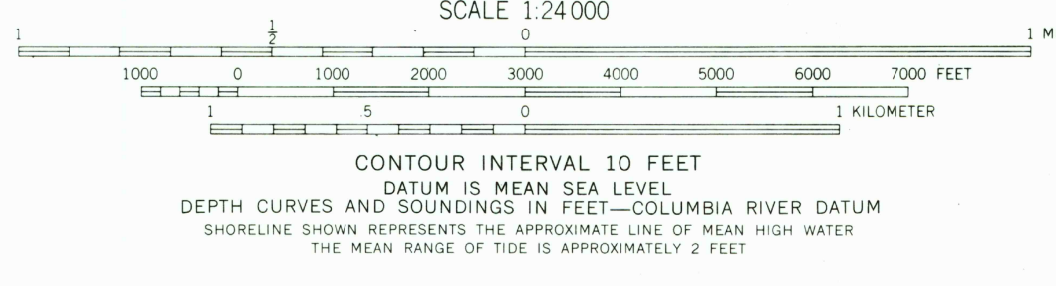
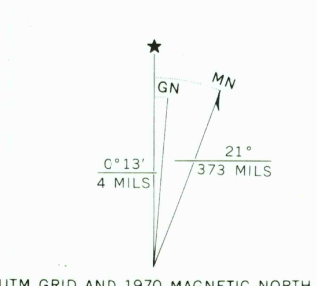


UNITED STATES  
DEPARTMENT OF THE INTERIOR  
GEOLOGICAL SURVEY

LAKE OSWEGO QUADRANGLE  
OREGON  
7.5 MINUTE SERIES (TOPOGRAPHIC)



Mapped, edited, and published by the Geological Survey  
Control by USGS, USC&GS, USCE, and State of Oregon  
Topography from aerial photographs by photogrammetric methods  
Aerial photographs taken 1952. Field checked 1954  
Revised from aerial photographs taken 1960. Field checked 1961  
Selected hydrographic data compiled from USC&GS  
Charts 6155 (1959) and 6171 (1958)  
This information is not intended for navigational purposes  
Polyconic projection. 1927 North American datum  
10,000-foot grid based on Oregon coordinate system, north zone  
1000-meter Universal Transverse Mercator grid ticks,  
zone 10, shown in blue  
Red tint indicates areas in which only landmark buildings are shown  
Fine red dashed lines indicate selected fence lines



LAKE OSWEGO, OREG.  
NW 1/4 OREGON CITY 15' QUADRANGLE  
N4522.5-W12237.5/7.5

1961  
PHOTOREVISED 1970  
AMS 1474 1 NW-SERIES Y892

USGS  
Historical File  
Topographic Division

THIS MAP COMPLIES WITH NATIONAL MAP ACCURACY STANDARDS  
FOR SALE BY U. S. GEOLOGICAL SURVEY, DENVER, COLORADO 80225, OR WASHINGTON, D. C. 20242  
A FOLDER DESCRIBING TOPOGRAPHIC MAPS AND SYMBOLS IS AVAILABLE ON REQUEST

Revisions shown in purple compiled from aerial photographs  
taken 1970. This information not field checked  
Purple tint indicates extension of urban areas

1350  
SEP 07 1977