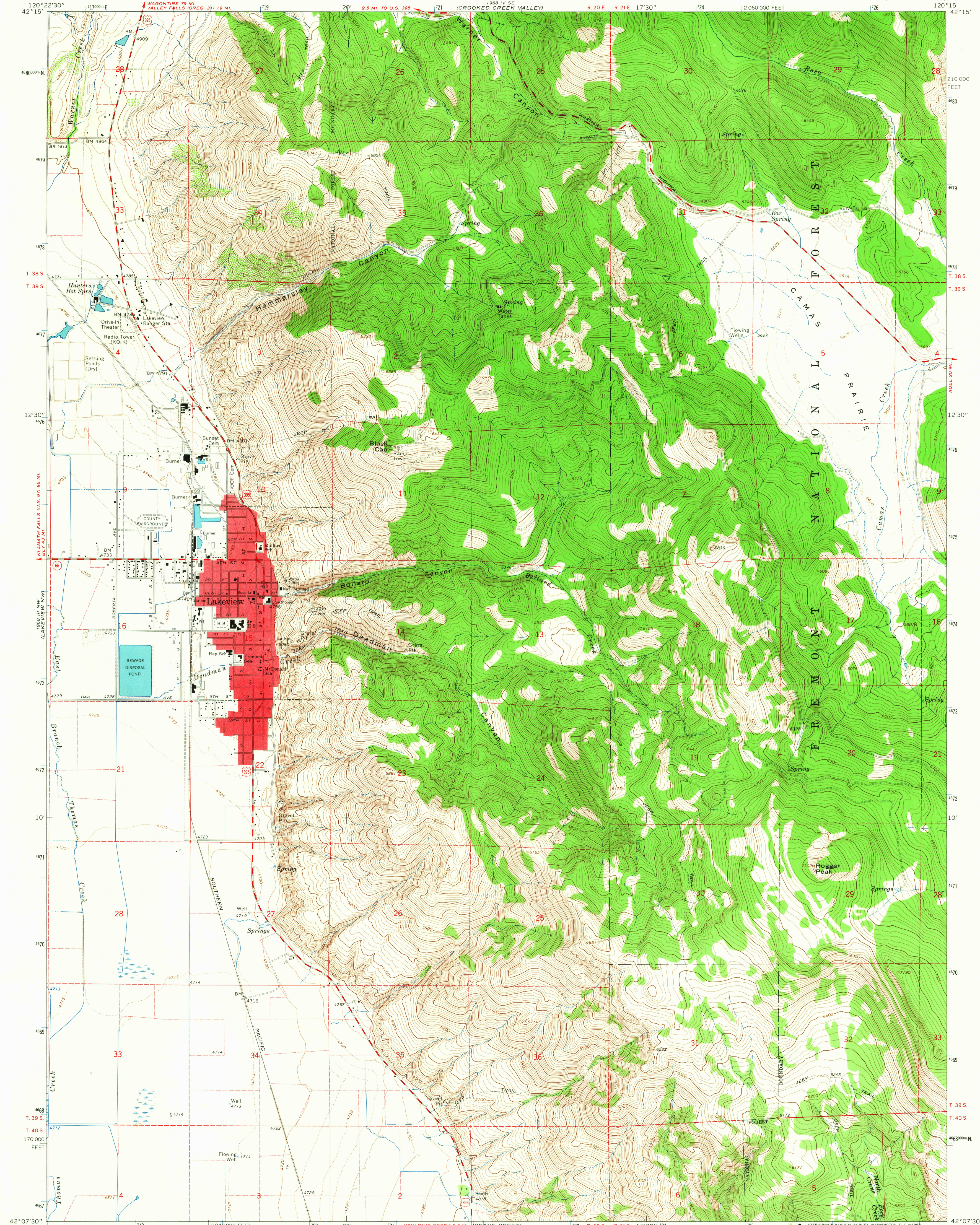
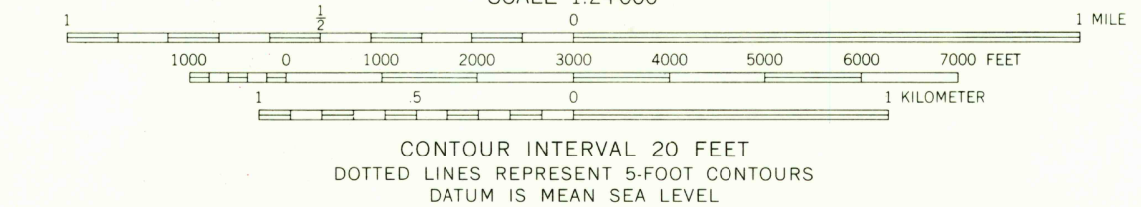
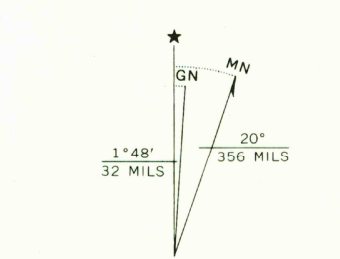


UNITED STATES  
DEPARTMENT OF THE INTERIOR  
GEOLOGICAL SURVEY

LAKEVIEW NE QUADRANGLE  
OREGON-LAKE CO.  
7.5 MINUTE SERIES (TOPOGRAPHIC)



Mapped, edited, and published by the Geological Survey  
Control by USGS, USC&GS, and State of Oregon  
Topography by photogrammetric methods from aerial  
photographs taken 1960, 1962, and 1963. Field  
checked 1964  
Polyconic projection. 1927 North American datum  
10,000-foot grid based on Oregon coordinate system,  
south zone  
1000-meter Universal Transverse Mercator grid ticks,  
zone 10, shown in blue  
Red tint indicates areas in which only landmark buildings  
are shown  
Fine red dashed lines indicate selected fence lines



ROAD CLASSIFICATION  
Medium-duty ——— Light-duty ———  
Unimproved dirt ———  
USGS Historical File Topographic Division  
U.S. Route ——— State Route ———

LAKEVIEW NE, OREG.  
N4207.5—W12015.7.5  
1964  
AMS 1968 III NE—SERIES V892

3095  
JAN 21 1966  
U.S.G.S.  
FILE COPY  
TOPOGRAPHIC DIVISION